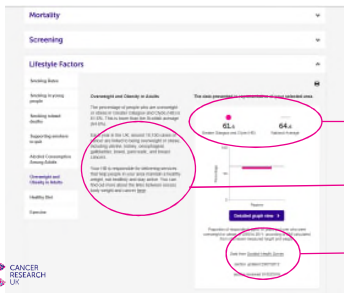


LOCAL CANCER STATS WEBSITE

LET'S BEAT CANCER SOONER
Find your local area at cruk.org/localstats



Averages for the Health Board, CCG
etc and National

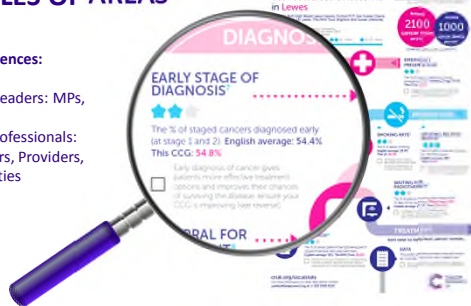
Relevance of data and Call for action

Source of Data

PROFILES OF AREAS

Audiences:

- Key Opinion Leaders: MPs, MEPs
- Healthcare professionals: Commissioners, Providers, Local Authorities

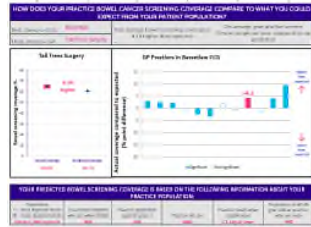


HOW DO WE USE DATA:

EARLY DIAGNOSIS

INTELLIGENCE FOR EARLY DIAGNOSIS

- Diagnostic Capacity: research into waiting times for endoscopy → Test Cancer Sooner Campaign → DoH announced additional funding up to £300 million a year by 2020
- Research: Expected Screening Levels Tool based on demographics



HOW CAN WE USE DATA:
TREATMENT

HOW CAN WE USE TREATMENT DATA?



We need better quality data, better linkages to understand variation:

- CHEMOTHERAPY
- RADIOTHERAPY
- SURGERY
- STRATIFIED MEDICINE



FIND US:

LET'S BEAT CANCER **SOONER**
Find your local area at cruk.org/localstats

CONTACT US:

LOCALSTATS@CANCER.ORG.UK

EUGENIA LEWES (EUGENIA.LEWES@CANCER.ORG.UK)

 CANCER
RESEARCH
UK

[illegible]