

# Rapid Cancer Registration Dataset: data at 2nd July 2022 (CAS2207)

Code ▾

The National Cancer Registration and Analysis Service (NCRAS) has developed an algorithmically generated Rapid Cancer Registration Dataset (RCRD) using the standard administrative datasets which flow rapidly into NHS Digital (NHSD) and are incorporated into the Cancer Analysis System (CAS) of NCRAS. The data takes the form of a series of significant events that occur to each patient as they proceed through the diagnostic and then therapeutic parts of the cancer pathway, and is available at approximately 4-5 months behind real time. The RCRD is shallower and narrower than the full NCRAS cancer registration dataset; it should be used and interpreted with reference to the caveats outlined within this document.

## Main findings

This document outlines the main features of the data to be aware of when interpreting the Rapid Cancer Registration Dataset:

- Across all cancers types included approximately 11.8% of cases are missing and 6.0% of cases are included erroneously or with incorrect cancer type or diagnosis date (when compared to 'Gold Standard' registration data for 2018 data).
- These figures vary strongly with cancer site. Broadly, more common cancers (particularly breast and prostate cancer) perform best and less common cancers (particularly bone and soft tissue and cancers of unknown primary) perform worst.
- There are more missing tumours in those aged over 70 compared to younger age groups.
- Other factors that reduce data completeness include the patient's route to diagnosis, mortality within 30 days of diagnosis, and the presence of multiple cancers.
- Usable data is available approximately 4-5 months after diagnosis or other clinical activity occurs.
- Data on cancer stage group at diagnosis is available for a number of common tumour types, although completeness is lower than that for the Gold Standard registration data. Where data is available it generally agrees with the Gold Standard stage group in 80-90% of tumours.

The dataset includes Rapid Cancer Registrations from January 2018 to the most recently available data (at the date specified in the title to this document), plus additional event data for the same period.

## Contents

Summary

Methodology

Proxy registration events (Rapid Registrations)

Data structures

Data Quality

How do the number of Rapid Registrations compare with Gold Standard Registrations?

Comparing the matching quality of Rapid Registrations

Sensitivity testing of matching criteria

Counts of events over time

Estimated completeness of Rapid Registrations and secondary datasets

Staging data in the Rapid Registrations dataset

TNM stage group 1-4

"Early" vs "Late" stage

Stage trends over time

Appendix 1 - List of pathway events

Appendix 2 - List of Rapid Registration fields available

Appendix 3 - Cancer groups used for matching

Appendix 4 - Alternative defining events

Appendix 5 - Counts and error tabulations

Appendix 6 - False negative errors and basis of diagnosis

## Summary

A need to make rapidly available 'proxy cancer registrations' (and associated clinical activity) for the COVID-19 period has been identified to support the public health response by NHS Digital (PHE) and other agencies, and service reorganisation by the NHS. These proxy registrations are called Rapid Registrations in contrast to the more formal detailed registration process that are used in non-clinical cancer research and the National Statistics (<https://www.gov.uk/government/statistics/cancer-registration-statistics-england-2018-final-release>).

The National Cancer Registration and Analysis Service (NCRAS) has developed a Rapid Cancer Registration Dataset (RCRD) using all standard administrative datasets which flow rapidly into PHE and are incorporated into the Cancer Analysis System (CAS) of NCRAS.

This document describes the dataset structure, creation methodology, and data quality caveats (due to the rapid automated creation process without additional data curation) behind this dataset.

These data structures and methodologies are expected to evolve over the course of the public health response to COVID-19. The data is updated monthly and is referred to by the monthly CAS snapshot upon which it is based, e.g. CAS2009 refers to the CAS snapshot from September 2020. This document is considered a 'living document' and strictly applies only to the snapshot of CAS identified in the title.

## Methodology

### Proxy registration events (Rapid Registrations)

Datasets available to PHE were surveyed for how many months in arrears that they arrive within NCRAS and are loaded in a usable format for analysis. From these datasets a selection of event types were defined similarly to those typically used for cancer pathway analysis pursued by NCRAS.

The data takes the form of a series of significant events that occur to each patient as they proceed through the diagnostic and then therapeutic parts of the cancer pathway. These events include chemotherapy cycles, radiotherapy episodes and major cancer surgery as well as events based on the Cancer Waiting Times (CWT) and Cancer Outcomes and Services Dataset (COSD) datasets. These event types are numbered in the range 1-23 in the dataset.

Some events hypothesised to be indicative of a cancer diagnosis were defined including 'Diagnosis reported in COSD' (event 51) and 'CWT estimated diagnosis date' (event 52). These are numbered in the range 50-57 in the dataset - see Appendix 1 for a full list.

The indicative events for diagnosis were explored as candidate Rapid Registration events. These candidate rapid registration events were judged as matching against a Gold Standard Registration event if it met the following two conditions:

- The difference in diagnosis dates for each event was 90 days or less.
- Both registrations fell into the same broad tumour group (as defined in Appendix 3).

Using these matching criteria False Positive errors and False Negative errors are defined as:

- **False Positive Error (FPE):** A rapid registration event has been created which does not match against a Gold Standard Registration in the comparison period.
- **False Negative Error (FNE):** There exists a Gold Standard Registration event for which no rapid registration event can be matched.

Additional filtering was applied to the candidate events and eventually event 101 was defined to minimise both false positive and false negative errors and is recommended for use by researchers as the best candidate for a rapid cancer registration. Appendix 4 briefly examines some of the alternatives examined in the development of this event definition.

## Data structures

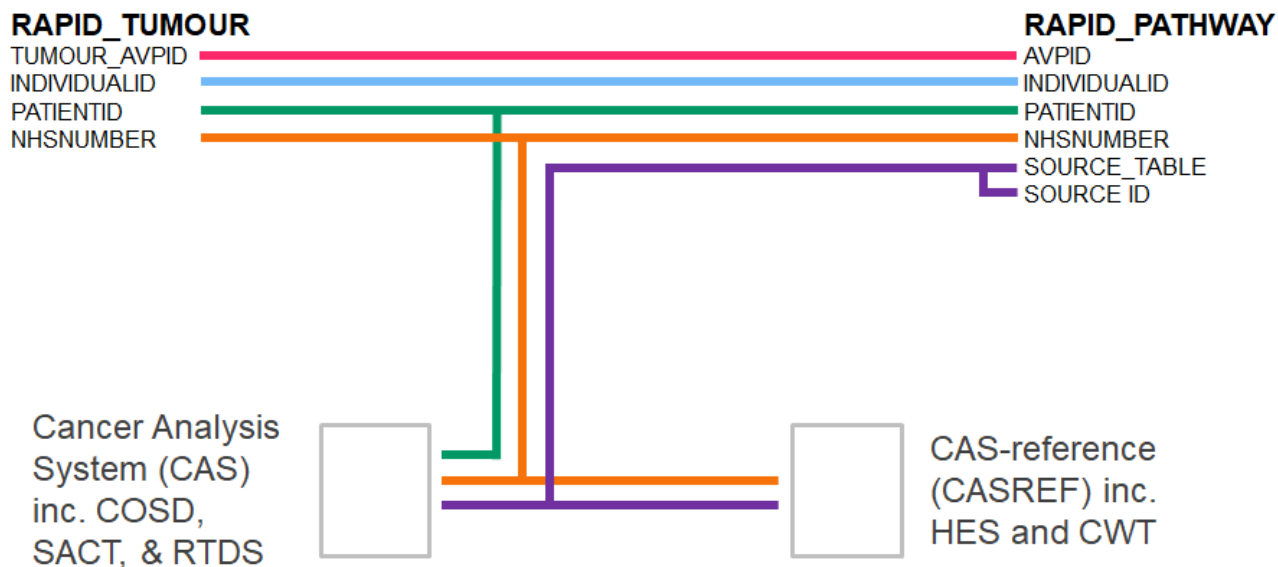
The rapid registration dataset consists of two tables:

**AT\_RAPID\_PATHWAY:** This is an event-based dataset with a number of types of event of interest defined based on the rapidly available datasets, see Appendix 1 for event definitions and properties. These are numbered in the range 1-23 for general purpose events, 50-57 for events that are candidates for combining into a rapid registration, and 101 for the final rapid registration event.

**AT\_RAPID\_TUMOUR:** This is a tumour level dataset that holds tumour and patient level data for each of the tumours defined by a rapid registration. The structure and contents of this table are presented in Appendix 3.

The rapid registration pathway and tumour table can be linked together as shown in Figure 1, and also to other datasets that are timely enough via NHSnumber.

Figure 1: Linkage diagram for the Rapid Cancer Registration Dataset



## Data Quality

### How do the number of Rapid Registrations compare with Gold Standard Registrations?

To illustrate the strengths and weaknesses of the Rapid Registrations compared to the gold standard process, registrations for tumours diagnosed during 2018 are compared in Figure 2.

For most tumour groups the counts of Rapid Registrations are significantly lower than those of standard registrations. The COSD system does not attempt to record basal cell carcinoma non-melanoma skin cancers (but they are recorded by hospital pathology systems, and thereby registered), explaining the discrepancy there. There is only one group where this situation is reversed - bone and soft tissue - for which a precise morphology is required to properly record the diagnosis. These cancers are being preferentially coded to bone and soft tissue in COSD (as the COSD standard necessitates simpler site-based coding, and this is the best choice under the circumstances) and re-coded during the gold standard registration process where more sophisticated combination of site and morphological coding is possible.

Figure 2: The number of cancer registrations by registration and tumour type, England, 2018

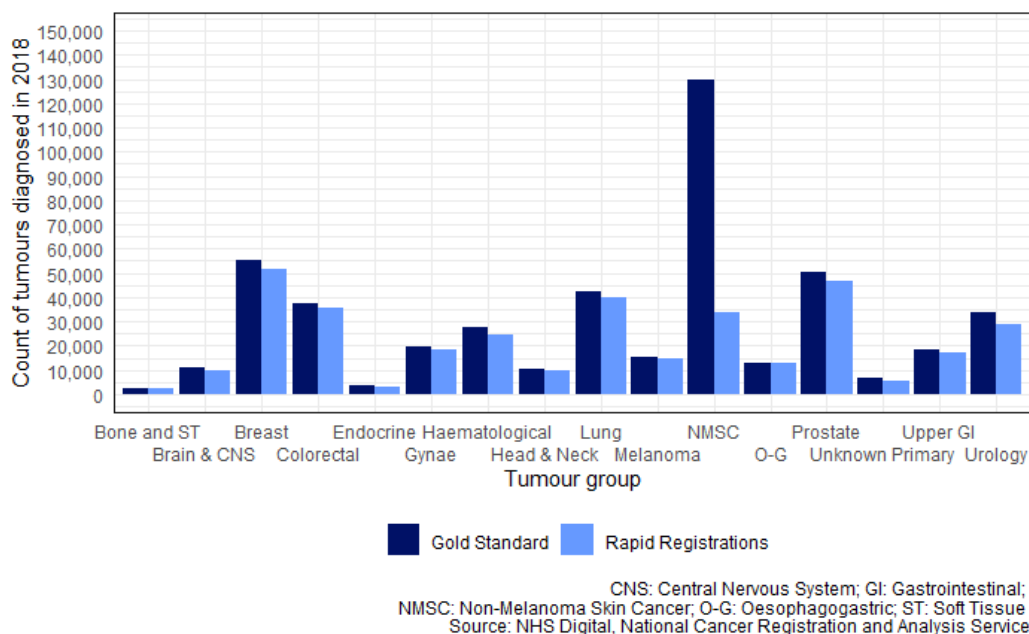
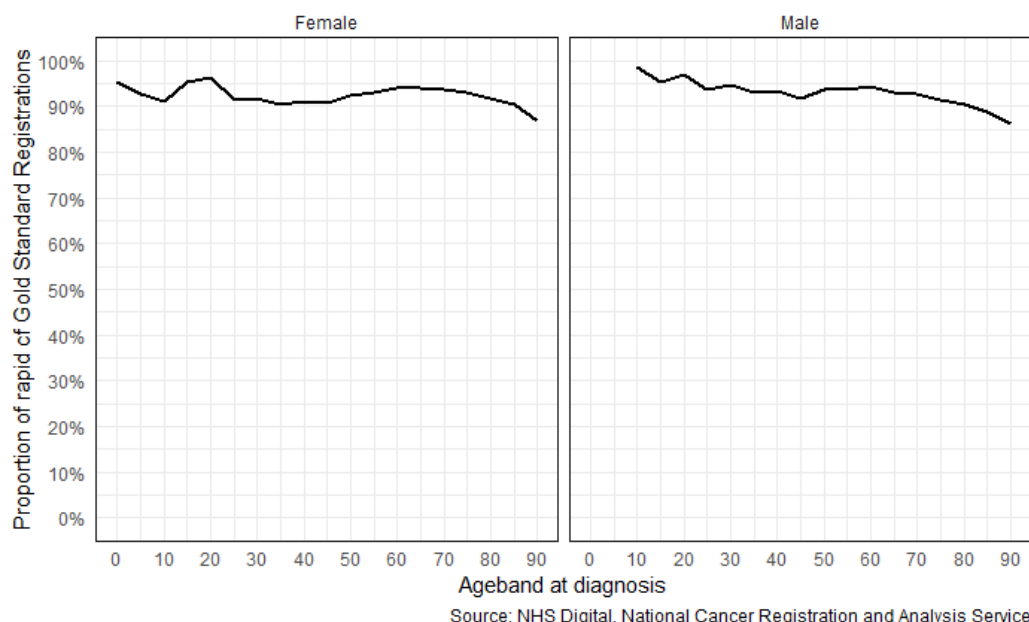


Figure 3 shows the age dependence of the ratio between Gold Standard and Rapid Registrations, Non-Melanoma Skin Cancer is excluded. The proportion of diagnoses is consistently high for both males and females until the age of 70 is reached, where it declines. This is explored further in Figure 5 below.

Figure 3: The proportion of cancer registrations by sex, age and registration type, England, 2018 (all tumour types combined)



## Comparing the matching quality of Rapid Registrations

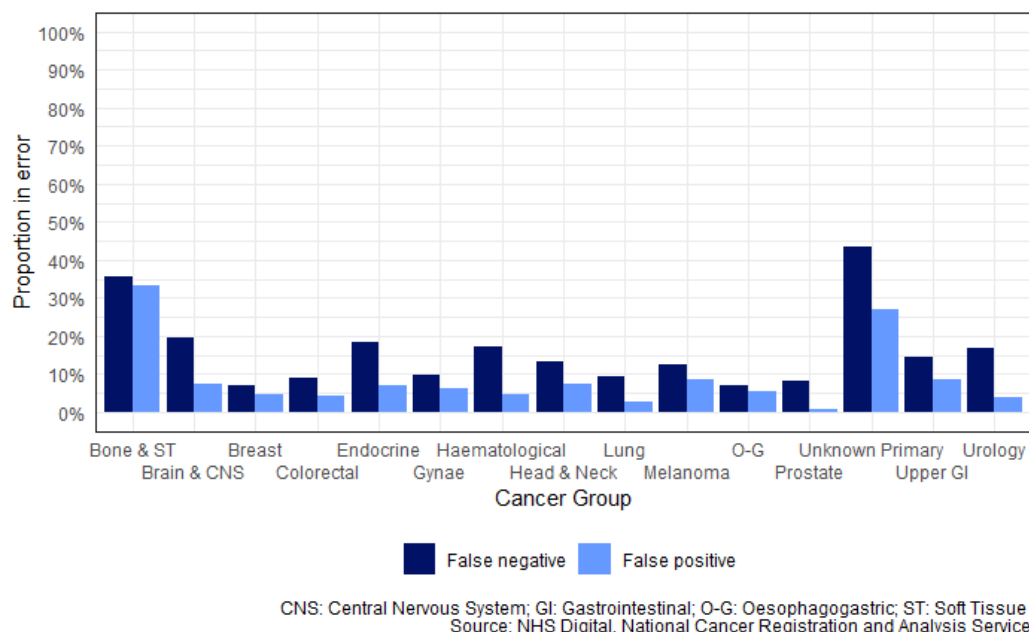
The quality of the Rapid Registrations was judged by comparing them against the gold-standard cancer registrations in the period April 2018 to September 2018. This period was chosen as available gold standard registration data was only finalised to December 2018 and a matching period of 90 days was allowed (restricting comparison to the middle six months of the twelve-month period).

Figure 4 shows the proportions of false positive and false negative events, by broad cancer type (excluding non-melanoma skin cancer), measured in the cas2207 snapshot (the tumour groups are defined in Appendix 3). A more detailed tabulation is available by tumour group and tumour site in Appendix 5.

In most tumour groups, there are more tumours missed by the rapid registrations process (false negatives) than there are falsely identified as tumours (false positives).

For breast and prostate, very few incorrect proxy registrations are made. Breast and prostate cancers are also least likely to be missing from the proxy dataset, whereas for brain and central nervous system (CNS), cancers of unknown primary, endocrine, bone and soft tissue, upper gastrointestinal and urological tumours more than 25% of cancers are missed. Bone and soft tissue tumours, which have more false positives than false negatives, are not frequently diagnosed. These tumours often require multiple pathology reports to correctly diagnose a patient and the Rapid Registrations dataset has not attempted to reconcile differences in the reported diagnoses.

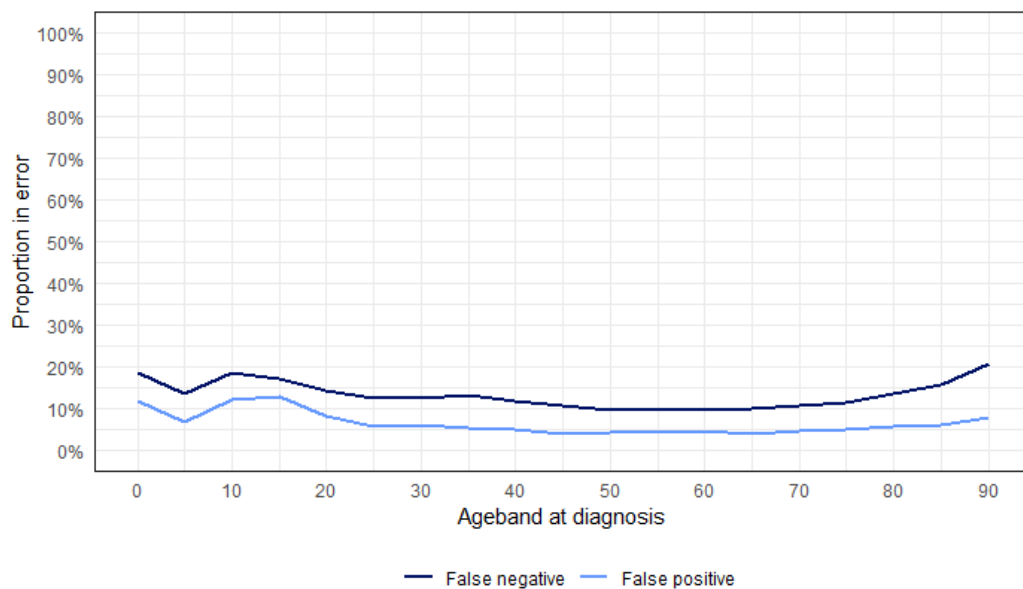
Figure 4: Types of error by tumour group



The proportion of false positive errors is fairly stable across all ages (Figure 5); the proportion of false negative errors slowly declines until age 70 when it increases significantly. The age dependence was investigated and the age-dependence of the basis of diagnosis was found to be at least partially responsible for this - see Appendix 6 for details.

The proportion of false positive cases is less sensitive to the age of the patient.

Figure 5: False negative and false positive errors by age band at diagnosis



Source: NHS Digital, National Cancer Registration and Analysis Service

The charts in Figure 6 (below) examine these patterns by tumour group. Please note that age groups for each tumour group must have a denominator of 25 patients or more or they are suppressed for reasons of statistical power.

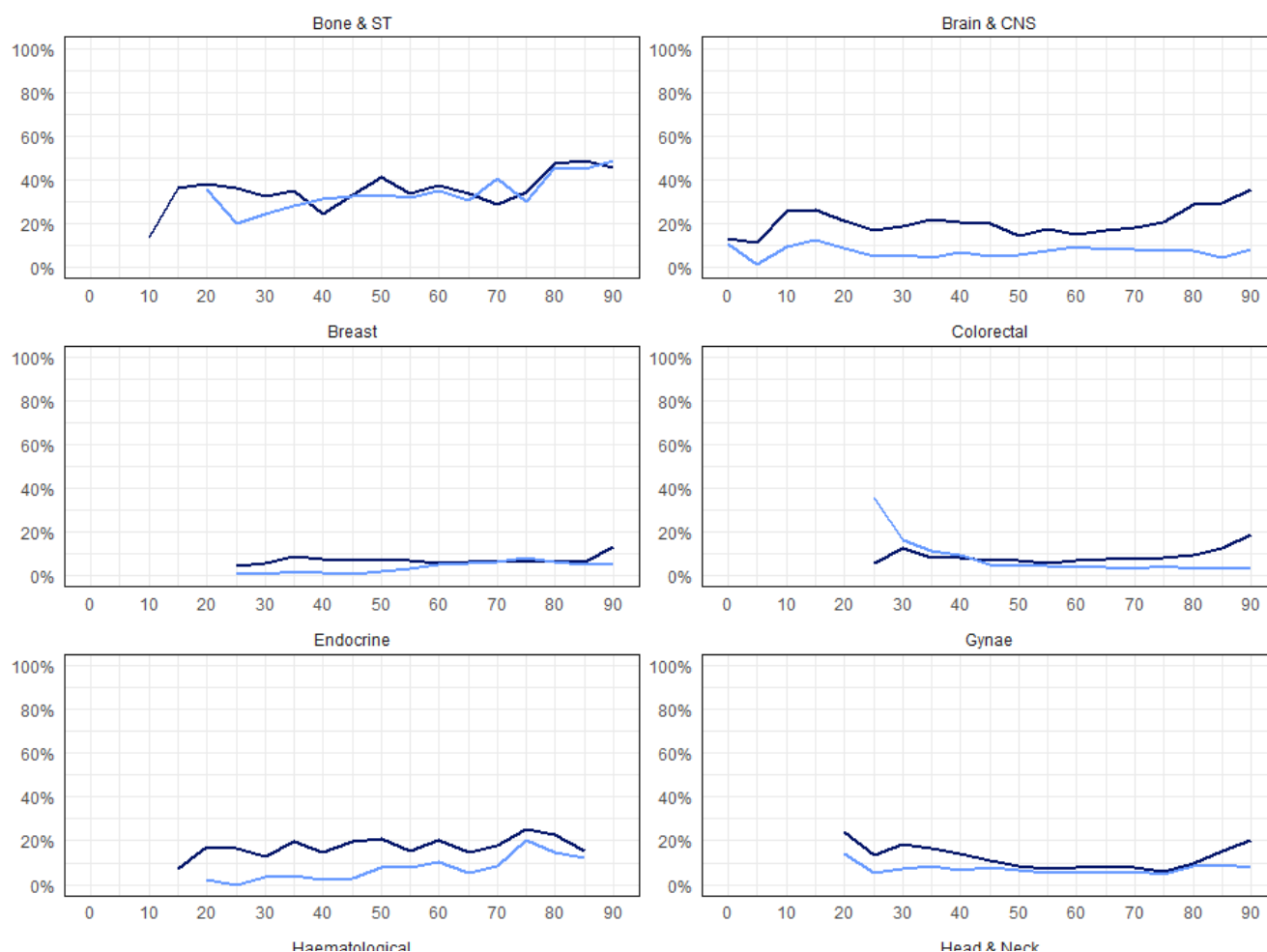
The patterns of false negative and false positive vary significantly by tumour group. Most groups have a higher proportion of false negatives than false positives at each age.

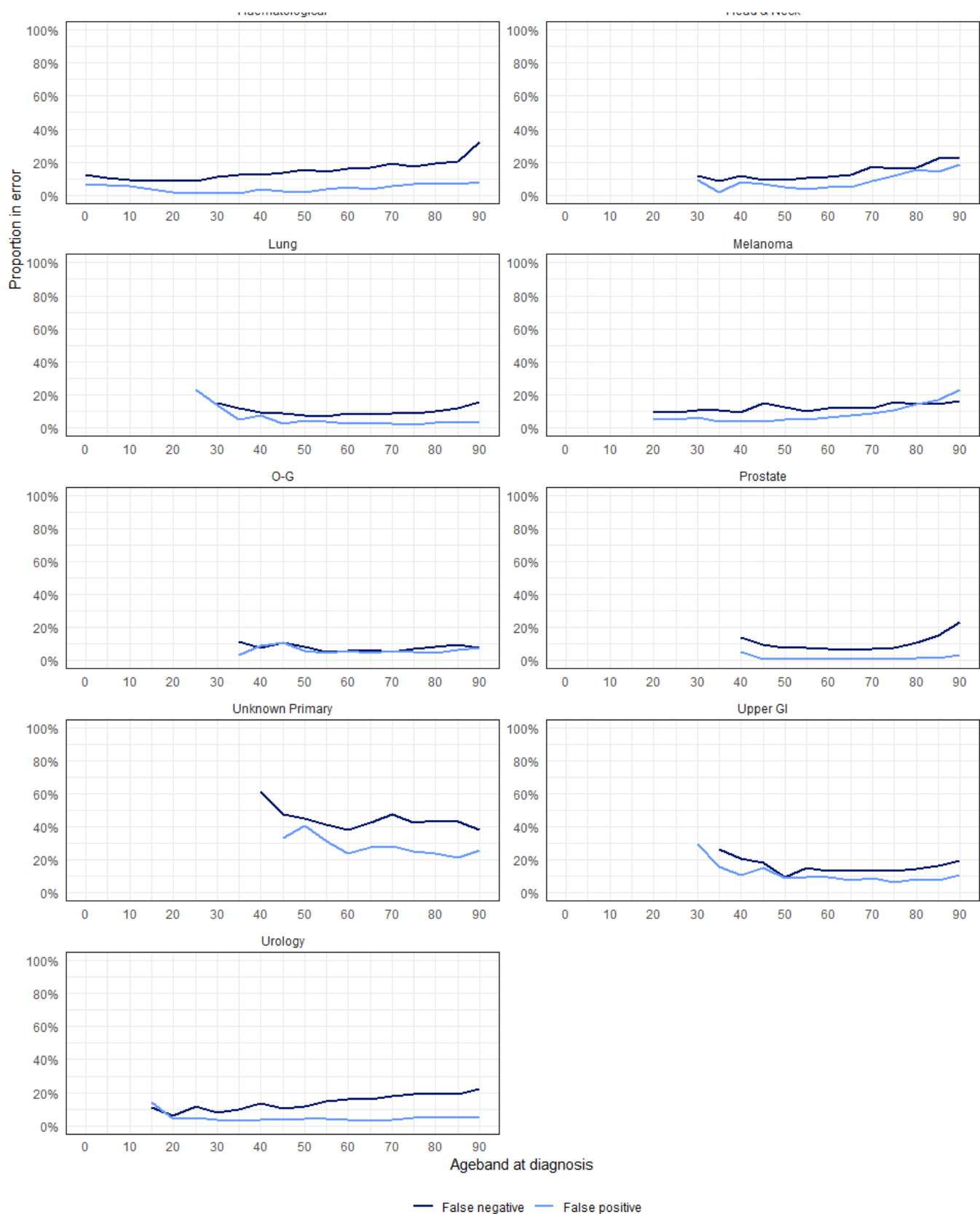
The proportion of false positives does not exhibit a trend by age for most tumour groups; the proportion rises with increasing age in the bone and soft tissue, head and neck groups and melanoma group and conversely falls with increasing age in the colorectal and unknown groups.

The proportion of false negatives rises with increasing age for all tumour groups except bone and soft tissue and endocrine. The most pronounced increases occur in the brain and central nervous system, colorectal, gynaecological, haematological, prostate, upper gastro-intestinal and unknown primary tumour groups.

The levels of both types of error are highest in tumour groups which are less likely to have solid-tissue pathology (haematological) or where survival rates are typically low. Conversely, the levels of error are lowest for tumour groups for which survival rates are typically higher.

Figure 6: False negative and false positive errors by age band at diagnosis and tumour group

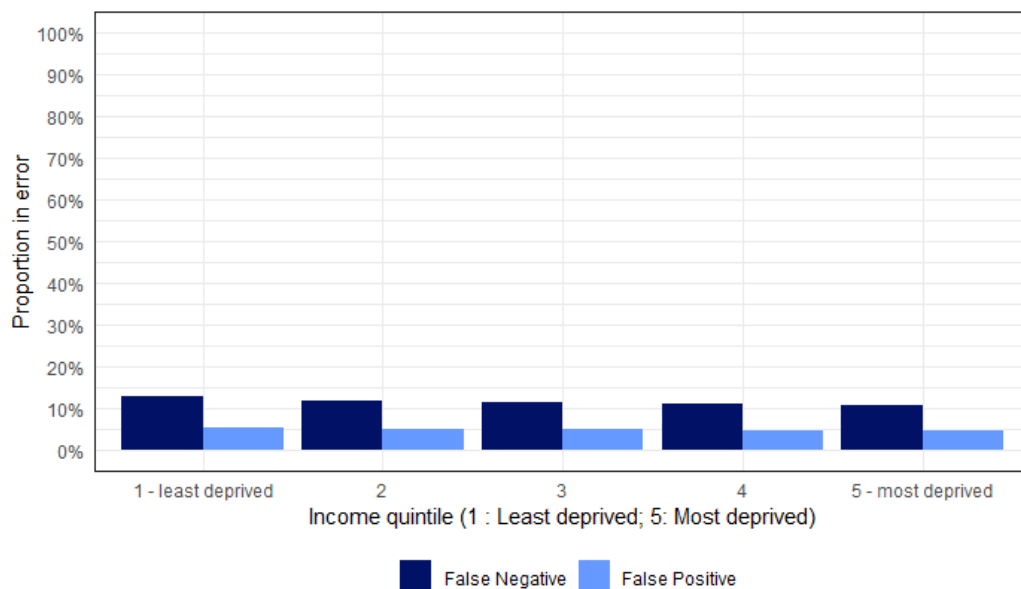




CNS: Central Nervous System; GI: Gastrointestinal; O-G: Oesophagogastric; ST: Soft Tissue  
Source: NHS Digital, National Cancer Registration and Analysis Service

The variation of the false positive and false negative errors with Income deprivation quintile is shown in figure 6. While there is an overall trend visible this is likely to be due to confounding due to the variation with tumour type shown above and the known association of the incidence of many cancer types with income deprivation.

Figure 6: False negative and false positive errors by income deprivation quintile

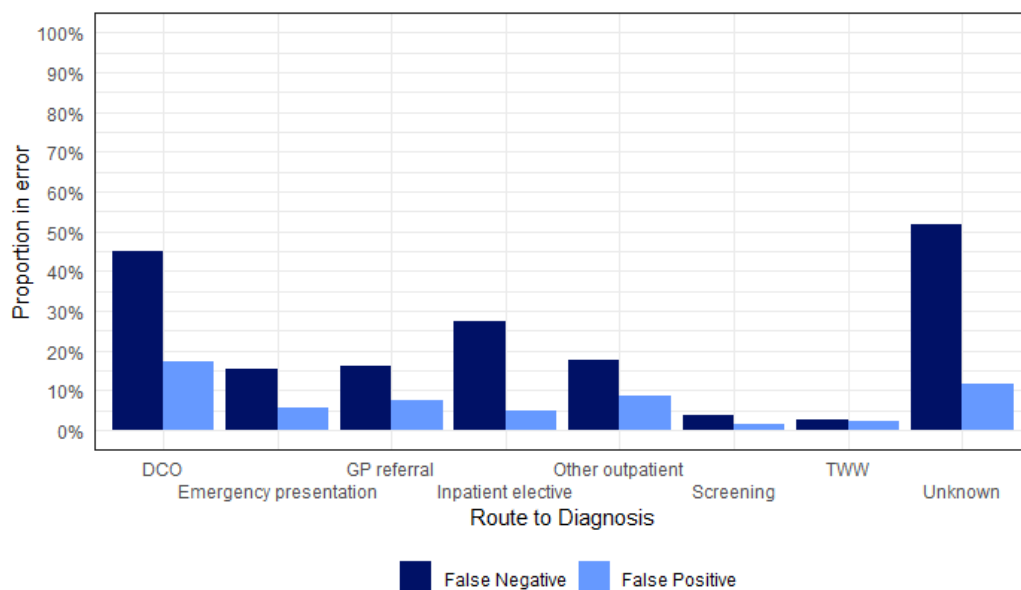


Source: NHS Digital, National Cancer Registration and Analysis Service

Figure 7 shows the variation of false negative and false positive errors with route to diagnosis. For false positives there is moderate variation with the lowest error rate being those cases identified through cancer screening or a two week wait referral. (These tumours are those that are likely to be captured in both the COSD dataset and the screening/Cancer Waiting Times datasets so the lower error rate is understandable.)

Most routes to diagnosis have a substantially higher false negative rate than the overall average. 'Two Week Wait' (TWW) and screening routes have a substantially lower false negative rate (and make up between them 45% of the total cohort).

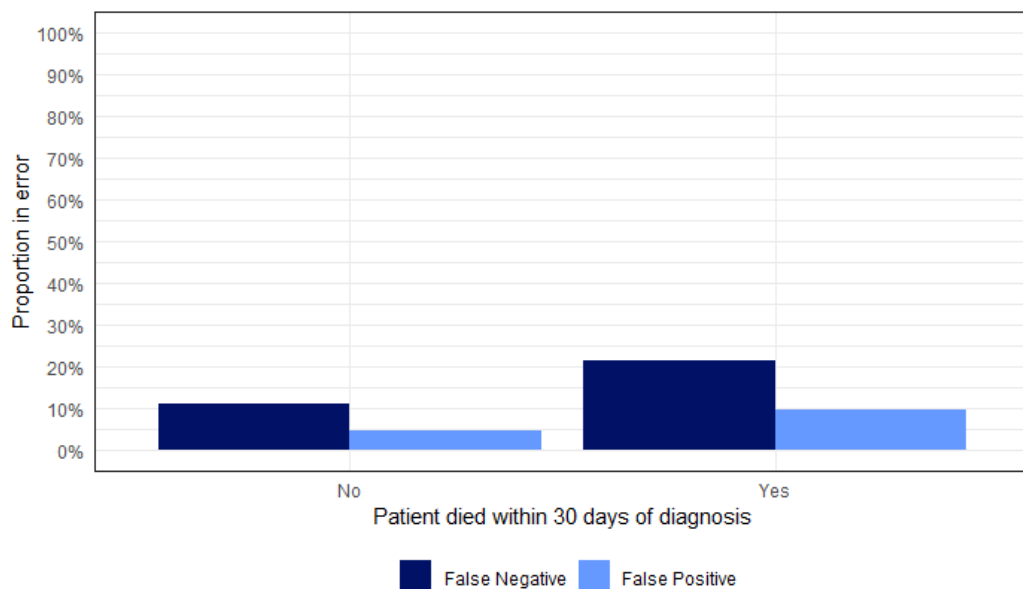
Figure 7: False negative and false positive errors by route to diagnosis



Source: NHS Digital, National Cancer Registration and Analysis Service

Figure 8 below shows the variation of false negative and false positive errors with whether or not the patient died within 30 days of diagnosis. The false negative error rate varies substantially between patients who die in the 30 days post-diagnosis compared to those who did, meaning that patients who die within 30 days are more likely to be missing from the dataset.

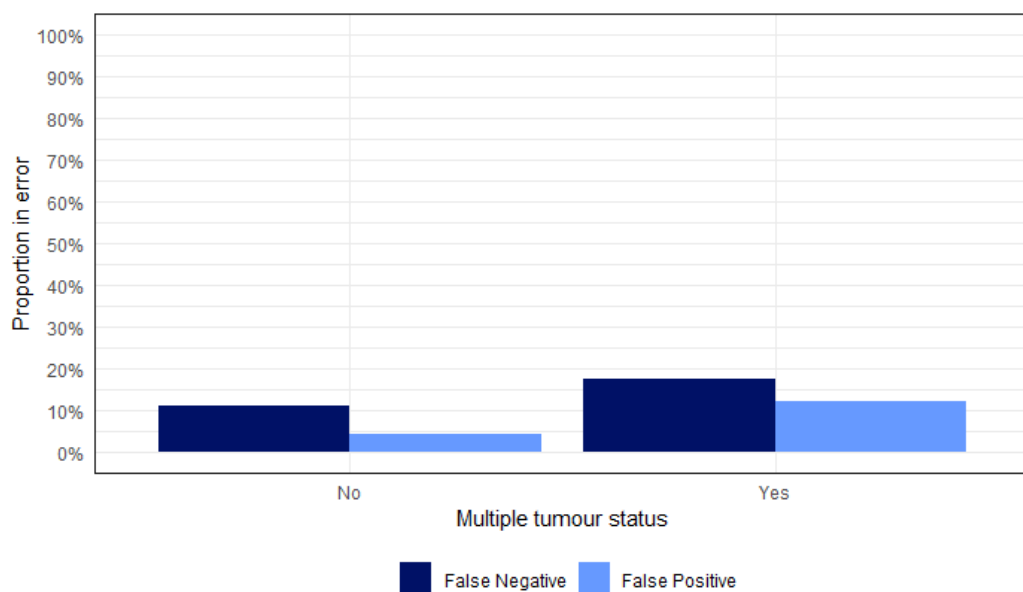
Figure 8: False negative and false positive errors by 30-day mortality



Source: NHS Digital, National Cancer Registration and Analysis Service

Figure 9 below shows the variation of false negative and false positive errors with the multiple tumour status of the patient, i.e. whether or not the patient had been diagnosed with more than one type of tumour in the period January 2018 onward. The false positive error rate varies substantially between patients with multiple tumour types and those that don't, meaning that these patients with multiple tumours are more likely to have incorrect tumour types or diagnosis dates recorded.

Figure 9: False negative and false positive errors by multiple tumour status

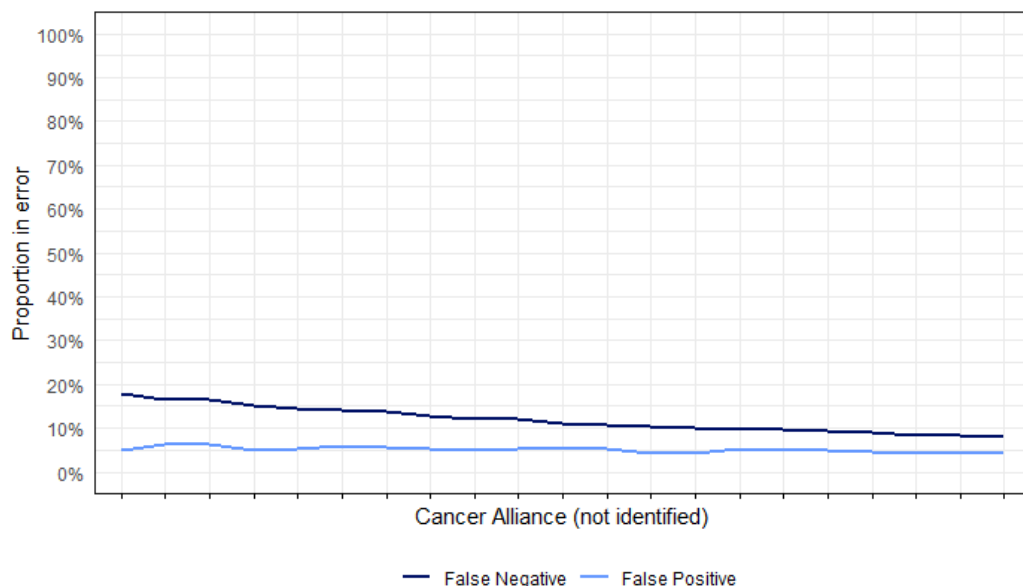


Source: NHS Digital, National Cancer Registration and Analysis Service

Figure 10 below shows the variation of false negative and false positive errors with the cancer alliance of residence of the patient at the time of diagnosis. The false negative error rate varies more in absolute terms than the false positive rate and may be driven by trust level variation (see figures 11 and 12 below).

Figure 10: False negative and false positive errors by Cancer Alliance



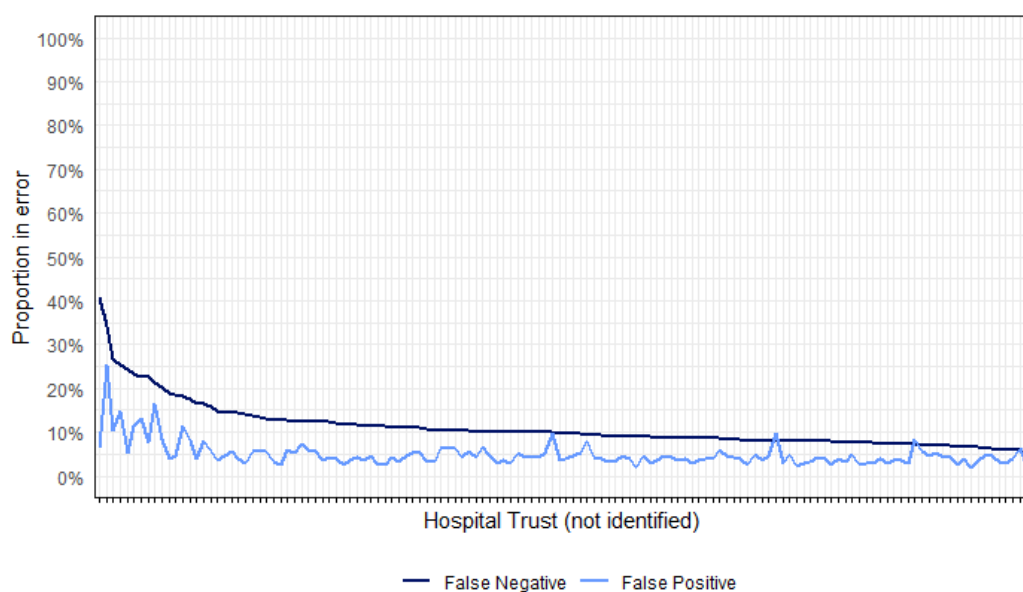


Source: NHS Digital, National Cancer Registration and Analysis Service

Figures 11 and 12 below show the variation of false negative and false positive errors with the trust that diagnosed the tumour. Figure 11 shows the error proportion and figure 12 the numerator (count) of the errors. Trusts shown are limited to NHS secondary care trusts with a denominator of at least 50 patients over the assessment period. Both figures are ordered in descending order of the false negative statistic - but note that the order is not the same in each figure.

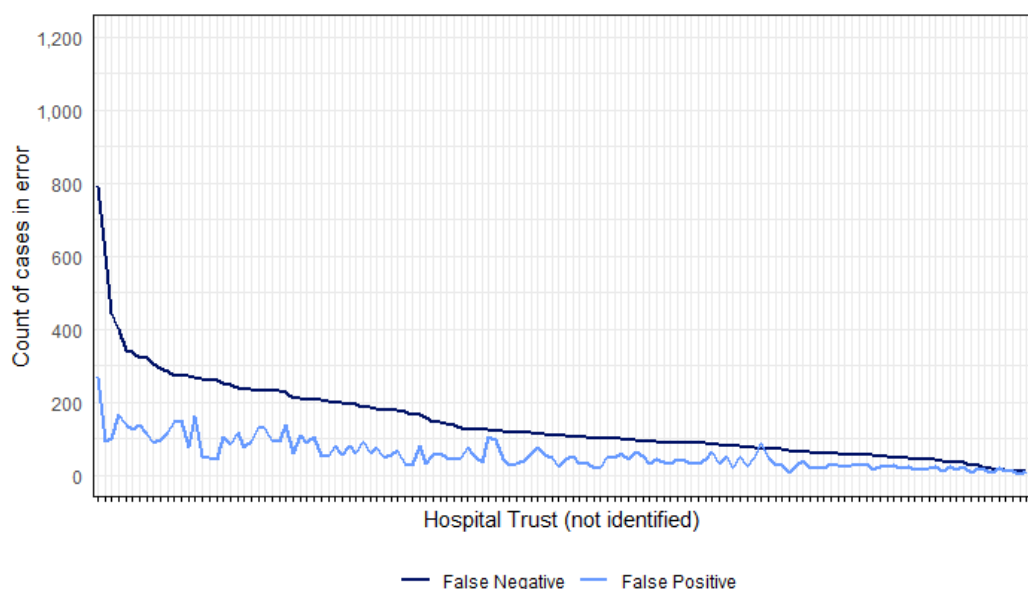
There is substantial variation in both false positive and false negative rates and counts. Some large trusts have several hundred or up to 1000 cases (over the six-month period under assessment).

Figure 11: False negative and false positive errors (proportion) by hospital trust



Source: NHS Digital, National Cancer Registration and Analysis Service

Figure 12: False negative and false positive errors (count) by hospital trust



## Sensitivity testing of matching criteria

In this section, the sensitivity of the Rapid Registrations dataset is illustrated for different matching criteria.

As expected, the stricter the criteria about the timing of events, more errors (both false negative and false positive) are observed. Not including a match specification on tumour type (the second line of table 1) improves both matching criteria and demonstrates that approximately 40% of false positive tumours have a cancer diagnosis of some sort when the necessity of matching by tumour group is removed.

Table 1: Proportions of false positive and negative errors under alternative matching criteria

Tumour matching	Match within N days	False Negative %	False Positive %
Broader	90	11.8%	6.0%
Broader	60	13.4%	7.6%
Broader	30	18.9%	13.3%
Broader	14	29.9%	25.0%
Broader	7	46.5%	42.8%
Broader	0	82.1%	80.7%
Narrow	90	19.6%	13.8%
None	90	10.2%	4.5%

## Counts of events over time

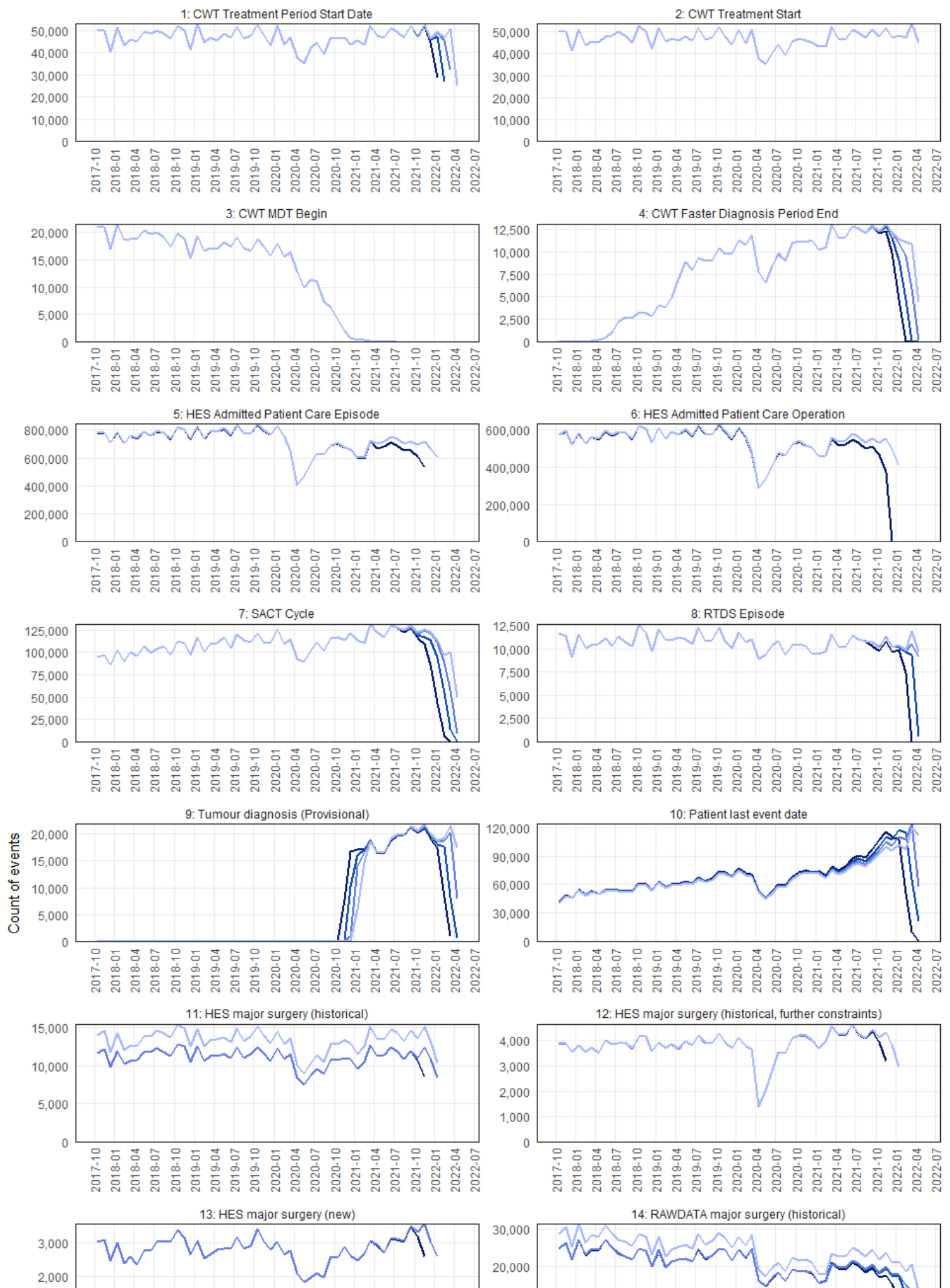
This section examines the population of events by chronological time and when they appear in successive analytical snapshots in the CAS. Figure 13 shows that most data items in the Rapid Registrations dataset are stable with respect to the snapshot month.

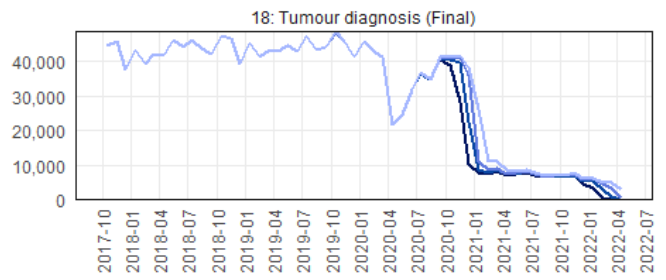
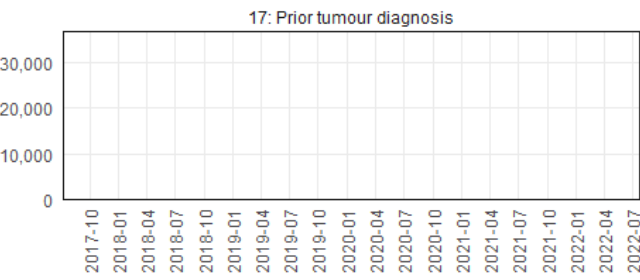
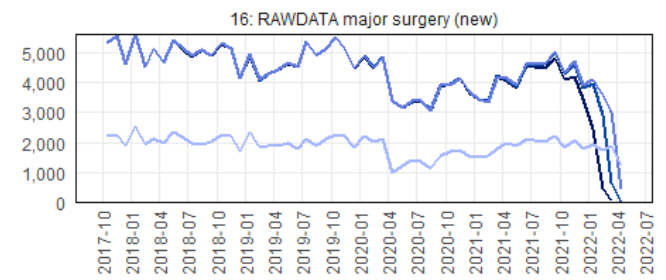
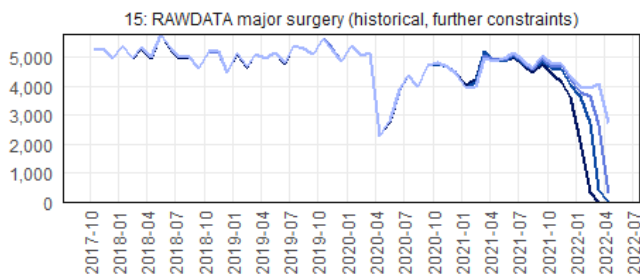
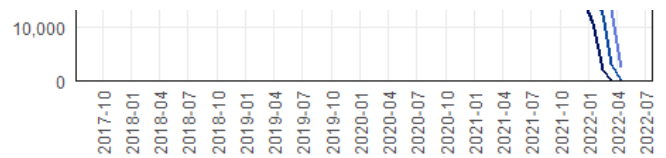
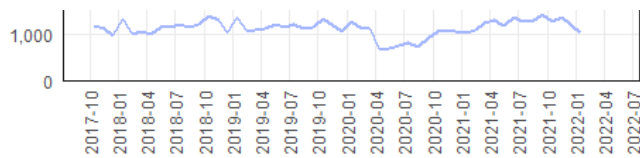
Specific comments about the events shown below are:

- Cancer Waiting Times data (events 1-4) are received based on the treatment start date, this explains the fact that for event 2 all lines lie exactly on top of each other. Other CWT events accumulate over successive snapshots where these events precede the first treatment start event.
- An issue with HES data resulting in lower than expected completeness port 2020-04-01 was resolved in cas2102, showing as increased event counts in events 5,6, 11, 12, 13 and 23.
- The definition of event 17 only includes tumour diagnoses prior to 2018, lack of data in the chart below is expected.
- Definitions of staging events may change between snapshots, this might explain higher or lower counts in one snapshot compared to others.
- The vital status shown in the event 19 is typically only assessed each January or the completion of registering each diagnosis year, explaining the large peaks in the graph.
- The raw data used to populate events 21, 54, and 56 is subject to ongoing deduplication, this explains lower counts in earlier time periods for later snapshots.

- Between snapshots there is generally an increase in the Event 101-103 (Inferred diagnoses) counts, particularly for recent months as additional COSD data is submitted. However, for some earlier months there is a small decrease in these event counts. This is because the algorithm to define Events 101-103 excludes potential diagnoses where the patient has a confirmed diagnosis for the same tumour group which was more than 90 days before the potential diagnosis, to avoid double-counting the same diagnosis. These exclusions can change between snapshots due to the processing of gold standard cancer registration data, which leads to an increase in confirmed previous diagnoses. However the magnitude of this effect has been measured to be <1% of all cases in any given month.

Figure 13: Population of data items to CAS snapshot

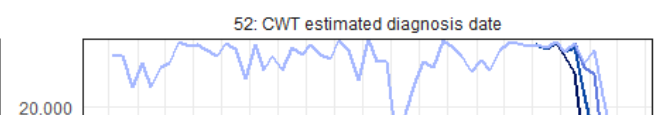
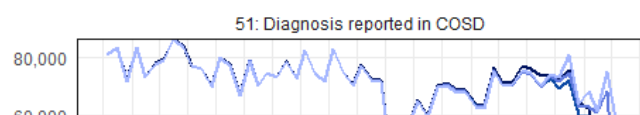
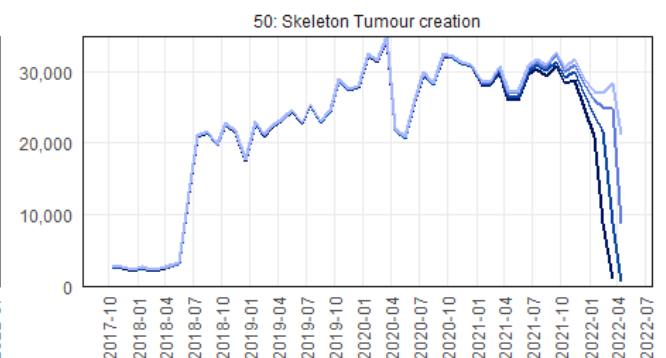
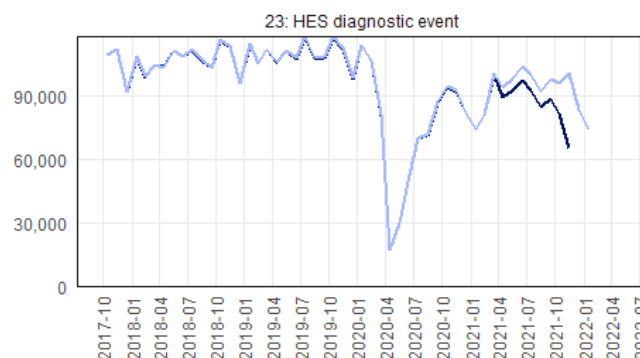
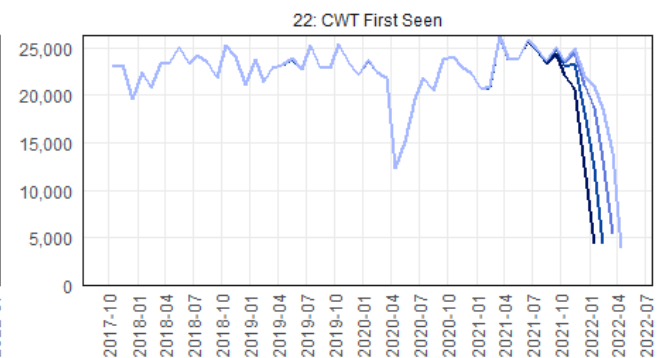
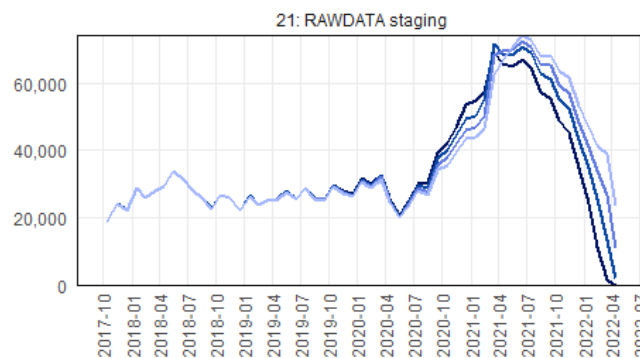
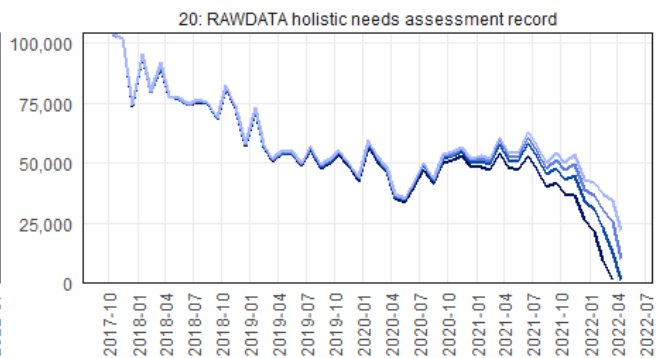
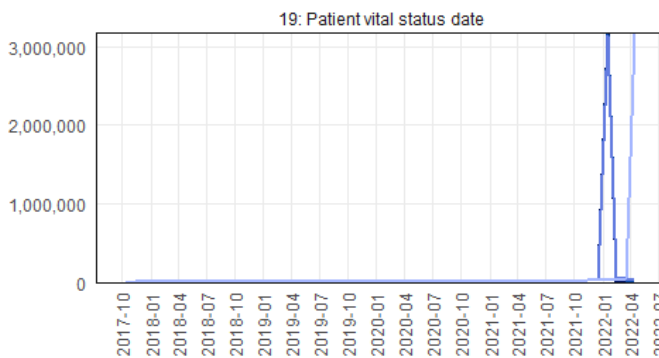


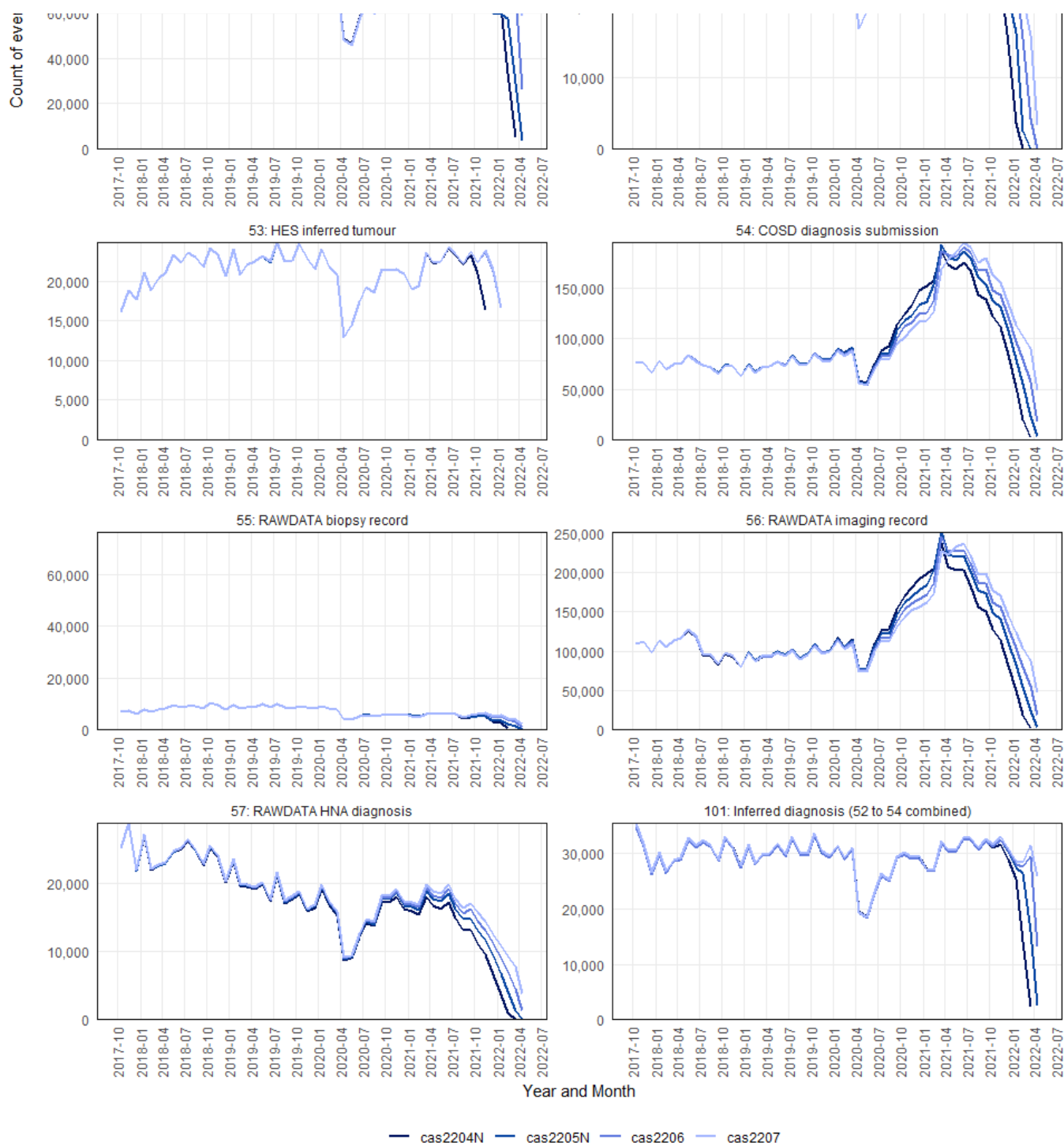


Year and Month

cas2204N cas2205N cas2206 cas2207

Source: NHS Digital, National Cancer Registration and Analysis Service





Source: NHS Digital, National Cancer Registration and Analysis Service

## Estimated completeness of Rapid Registrations and secondary datasets

Detailed linked rapid cancer registration, CWT, SACT and RTDS data is available at approximately a four-month lag from real time. Linked HES and raw COSD data is available at approximately 4-5 months behind real time.

Table 2 below shows data usability and completeness for Rapid Registrations and the constituent datasets. The "latest usable" column shows the 'hard limit' on data that is considered fit for analytical purposes (90% completeness), even in months prior to this though data is not necessarily considered complete and the completeness is displayed below. This should be taken into account in any use of the rapid registration data and the secondary datasets.

For the Rapid Tumour data completeness is expressed as the proportion of CCG of residence which show a cancer incidence within the normally expected range (see Table 3 below). For other datasets except CWT completeness is computed as a percentage of the number of data providers who have supplied data over those who are expected to do so.

Data completeness within the Cancer Waiting Times dataset varies at patient level with event type. Figures for the Treatment Start Date and Treatment Period Start Date are given below. Completeness of other CWT events can be estimated by inspecting Figure 13 (events 1-4).

Table 2: Rapid registration and dataset usability/completeness in cas2207

Data source	Latest usable	October 2021	November 2021	December 2021	January 2022	February 2022	March 2022	April 2022
-------------	---------------	--------------	---------------	---------------	--------------	---------------	------------	------------

Data source	Latest usable	October 2021	November 2021	December 2021	January 2022	February 2022	March 2022	April 2022
Rapid Tumours (COSD)	April 2022	Complete	Complete	Complete	96%	Complete%	97%	90%
HES	December 2021	Complete	Complete	Complete	-	-	-	-
SACT	January 2022	98%	93%	94%	92%	-	-	-
RTDS	April 2022	98%	98%	97%	98%	96%	98%	92%
CWT (TSD)	April 2022	Complete	Complete	Complete	Complete	Complete	Complete	Complete
CWT (TPSD)	March 2022	Complete	Complete	Complete	Complete	Complete	98%	-

*Note:*

COSD = Cancer Outcomes and Services Dataset

TSD = Treatment Start Date

TPSD = Treatment Period Start Date

**Table 3: Number of outlier CCGs in COSD dataset in cas2207**

The table below shows the number of CCGs (using the April 2020 boundaries) which have 3-sigma outlier counts per month (either high or low) compared to the expectation of the fraction of the total number of new cancer registrations in England. This can be used to judge to what extent there is large scale missing data in COSD (and therefore in the Rapid Registrations in any particular month.)

Year and month	Outlier: High	Outlier: Low	In expected range	Total received
2020-01	0	1	134	135
2020-02	1	0	134	135
2020-03	0	1	134	135
2020-04	4	7	124	135
2020-05	4	3	128	135
2020-06	1	3	131	135
2020-07	1	0	134	135
2020-08	0	5	130	135
2020-09	1	0	134	135
2020-10	0	3	132	135
2020-11	0	1	134	135
2020-12	1	1	133	135
2021-01	1	0	134	135
2021-02	1	2	132	135
2021-03	0	2	133	135
2021-04	3	0	132	135
2021-05	1	1	133	135
2021-06	0	1	134	135
2021-07	0	2	133	135
2021-08	0	1	134	135
2021-09	2	3	130	135
2021-10	1	2	132	135

Year and month	Outlier: High	Outlier: Low	In expected range	Total received
2021-11	0	1	134	135
2021-12	0	1	134	135
2022-01	3	3	129	135
2022-02	0	3	132	135
2022-03	0	4	131	135
2022-04	0	13	122	135

## Staging data in the Rapid Registrations dataset

### TNM stage group 1-4

The size and extent of a cancer is commonly described using the 'TNM' system (<https://www.uicc.org/resources/tnm>) for "Tumour", "Node", and "Metastases". This is often abbreviated to a number between 1 (typically a localised tumour with limited spread) to 4 (typically a tumour that has invaded or spread to distant organs). The stage at diagnosis is very strongly associated with patient outcomes.

In the current version of the Rapid Registrations dataset partial staging data is provided for a number of different cancer sites (ICD-10 codes can be found in the labels for tables 5a-k). This has been benchmarked against the gold standard cancer registry data for cas2207.

Table 4 shows the count and proportion of cases by TNM stage group for both the Rapid Registrations and the Gold Standard Registrations, for calendar year 2018. For example 32% of breast cancers are TNM stage group 1 in the Rapid Registrations, but 38% in the Gold Standard Registrations. Compared to the Gold Standard Registrations in 2018, the Rapid Registrations under report breast cancers diagnosed at stages 1 or 2; colorectal cancers diagnosed at stage 4 are under reported and prostate cancers have under reported stages 1 and 4. In all three tumour groups, there are more tumours allocated to the unknown or unstageable category. Lung cancers in the RCRD most accurately match the Gold Standard Registrations and exhibits a broadly similar stage profile from both measures.

Table 4: Summary proportions of stage at diagnosis for the Rapid Registrations and Gold Standard Registrations

Broad Cancer Group	Stage Group	Count (Rapid)	Percentage (Rapid)	Count (Gold Standard)	Percentage (Gold Standard)
Bladder	1	2319	24.2%	2867	29.9%
Bladder	2	1794	18.7%	1880	19.6%
Bladder	3	557	5.8%	883	9.2%
Bladder	4	257	2.7%	659	6.9%
Bladder	U	4669	48.7%	3307	34.5%
Breast	1	13877	31.7%	16381	37.4%
Breast	2	13154	30.1%	16622	38.0%
Breast	3	3204	7.3%	3664	8.4%
Breast	4	1163	2.7%	1954	4.5%
Breast	U	12353	28.2%	5130	11.7%
Colorectum	1	4920	15.0%	5507	16.8%
Colorectum	2	7032	21.4%	7727	23.6%
Colorectum	3	8233	25.1%	9296	28.3%
Colorectum	4	5108	15.6%	7466	22.8%
Colorectum	U	7516	22.9%	2813	8.6%
Kidney	1	2377	28.8%	3346	40.6%
Kidney	2	446	5.4%	559	6.8%
Kidney	3	1366	16.6%	1658	20.1%
Kidney	4	686	8.3%	1575	19.1%

Broad Cancer Group	Stage Group	Count (Rapid)	Percentage (Rapid)	Count (Gold Standard)	Percentage (Gold Standard)
Kidney	U	3373	40.9%	1110	13.5%
Lung	1	6173	17.1%	6651	18.4%
Lung	2	2591	7.2%	2693	7.5%
Lung	3	7296	20.2%	7612	21.1%
Lung	4	14918	41.3%	17214	47.7%
Lung	U	5128	14.2%	1936	5.4%
Lymphoma	1	838	7.4%	1602	14.1%
Lymphoma	2	937	8.2%	1577	13.9%
Lymphoma	3	1184	10.4%	1959	17.2%
Lymphoma	4	2496	21.9%	4680	41.1%
Lymphoma	U	5929	52.1%	1566	13.8%
Melanoma	1	6330	48.0%	8265	62.6%
Melanoma	2	2398	18.2%	2658	20.1%
Melanoma	3	441	3.3%	1034	7.8%
Melanoma	4	196	1.5%	352	2.7%
Melanoma	U	3829	29.0%	885	6.7%
Oesophagus	1	291	3.5%	450	5.4%
Oesophagus	2	1505	18.0%	971	11.6%
Oesophagus	3	1785	21.4%	2156	25.8%
Oesophagus	4	2553	30.6%	3253	39.0%
Oesophagus	U	2217	26.5%	1521	18.2%
Ovary	1	1139	22.4%	1472	28.9%
Ovary	2	235	4.6%	278	5.5%
Ovary	3	1176	23.1%	1632	32.1%
Ovary	4	691	13.6%	1050	20.6%
Ovary	U	1851	36.4%	660	13.0%
Pancreas	1	353	4.4%	668	8.3%
Pancreas	2	616	7.7%	805	10.0%
Pancreas	3	739	9.2%	1040	13.0%
Pancreas	4	2025	25.3%	4126	51.5%
Pancreas	U	4286	53.4%	1380	17.2%
Prostate	1	11621	25.1%	16264	35.1%
Prostate	2	5511	11.9%	6568	14.2%
Prostate	3	10368	22.4%	11680	25.2%
Prostate	4	5626	12.1%	8083	17.4%
Prostate	U	13201	28.5%	3732	8.1%



Broad Cancer Group	Stage Group	Count (Rapid)	Percentage (Rapid)	Count (Gold Standard)	Percentage (Gold Standard)
Stomach	1	317	8.3%	334	8.7%
Stomach	2	358	9.3%	453	11.8%
Stomach	3	609	15.9%	679	17.7%
Stomach	4	1100	28.6%	1622	42.2%
Stomach	U	1458	37.9%	754	19.6%
Uterus	1	4637	58.1%	5408	67.8%
Uterus	2	510	6.4%	542	6.8%
Uterus	3	730	9.1%	823	10.3%
Uterus	4	501	6.3%	556	7.0%
Uterus	U	1603	20.1%	652	8.2%

In Tables 5a-m below, the distribution of the stage allocations between the Rapid Registrations and the Gold Standard Registrations are examined. The figures indicate the proportion of agreement at the 1-digit TNM stage group level, where the stage is known in the Rapid Registrations dataset. Stages 1-4 in the Rapid Registrations dataset agree with the gold standard stage variable for a high proportion.

For example, when examining the subset of Rapid Registrations breast tumours that are identified as TNM stage 1 (32%), approximately 89% of these are found to be TNM stage group 1 in the gold standard registration data, with another 11% distributed across TNM stages 2-4 and the unknown or unstageable groups.

For many but not all (e.g., late stage breast cancer), roughly 85% or more of staged cases in the Rapid Registrations table have the same stage grouping as the equivalent tumour in the standard registration data - this can be seen in the table below by inspecting the figures where the stage metrics for the Rapid Registrations and Gold Standard Registrations are the same.

Where the stage is labelled as unknown or unstageable in the rapid pathway dataset it is known for at least 70% of those cases in the gold standard data.

#### Tables 5a-m: Stage comparison between Rapid Registrations and Gold Standard Registrations by cancer site

##### a. bladder (ICD-10 C67)

Stage Group (Gold Standard)	Stage Group (Rapid)				
	1	2	3	4	Unknown
1	84.9%	4.1%	7.7%	5.4%	16.4%
2	3.9%	71.9%	15.6%	5.8%	8.5%
3	2.6%	10.9%	65.2%	4.7%	5.4%
4	1.3%	5.0%	5.6%	79.4%	6.6%
U	7.3%	8.2%	5.9%	4.7%	63.1%

##### b. breast (ICD-10 C50)

Stage Group (Gold Standard)	Stage Group (Rapid)				
	1	2	3	4	Unknown
1	89.2%	4.8%	1.4%	3.2%	26.6%
2	6.4%	88.7%	10.9%	14.0%	28.7%
3	0.5%	2.7%	80.6%	5.5%	4.8%
4	0.2%	0.9%	2.9%	72.6%	7.1%
U	3.7%	3.0%	4.1%	4.7%	32.7%

c. colorectum (ICD-10 C18-C20)

Stage Group (Gold Standard)	Stage Group (Rapid)				
	1	2	3	4	Unknown
1	84.9%	2.1%	1.8%	0.6%	13.4%
2	5.7%	85.6%	5.6%	1.2%	12.0%
3	6.6%	7.5%	85.1%	4.4%	16.1%
4	0.9%	2.8%	5.8%	92.8%	26.7%
U	1.9%	2.0%	1.7%	1.0%	31.7%

d. kidney (ICD-10 C64)

Stage Group (Gold Standard)	Stage Group (Rapid)				
	1	2	3	4	Unknown
1	91.3%	6.5%	3.1%	1.7%	32.4%
2	0.5%	78.5%	1.0%	0.7%	5.3%
3	1.7%	6.7%	85.7%	3.9%	11.6%
4	0.5%	3.4%	5.9%	92.4%	24.7%
U	6.0%	4.9%	4.2%	1.2%	26.1%

e. lung (ICD-10 C33-C34)

Stage Group (Gold Standard)	Stage Group (Rapid)				
	1	2	3	4	Unknown
1	93.8%	6.5%	1.1%	0.4%	10.7%
2	2.6%	84.6%	1.7%	0.3%	3.1%
3	1.7%	4.9%	90.8%	1.3%	11.1%
4	1.2%	3.0%	5.5%	97.5%	41.2%
U	0.7%	1.0%	0.9%	0.4%	33.9%

f. melanoma (ICD-10 C43)

Stage Group (Gold Standard)	Stage Group (Rapid)				
	1	2	3	4	Unknown
1	94.4%	1.6%	5.2%	9.2%	57.8%
2	2.0%	79.3%	9.1%	16.8%	14.5%
3	2.0%	11.8%	78.5%	14.8%	6.6%
4	0.2%	1.6%	2.5%	47.4%	5.2%
U	1.5%	5.8%	4.8%	11.7%	15.9%

g. oesophagus (ICD-10 C15)

Stage Group (Gold Standard)	Stage Group (Rapid)				
	1	2	3	4	Unknown

Stage Group (Gold Standard)	Stage Group (Rapid)				
	1	2	3	4	Unknown
1	80.8%	5.0%	0.5%	0.2%	5.6%
2	7.9%	49.6%	3.5%	1.0%	5.2%
3	2.1%	35.0%	68.6%	6.3%	10.7%
4	1.0%	5.3%	21.8%	83.5%	29.3%
U	8.2%	5.0%	5.6%	9.0%	49.2%

h. ovary (ICD-10 C56-C57)

Stage Group (Gold Standard)	Stage Group (Rapid)				
	1	2	3	4	Unknown
1	97.4%	7.2%	0.9%	0.3%	18.0%
2	0.4%	88.1%	0.4%	NA	3.3%
3	0.8%	2.6%	91.7%	11.1%	25.0%
4	0.3%	0.4%	4.4%	84.4%	22.2%
U	1.1%	1.7%	2.6%	4.2%	31.6%

i. prostate (ICD-10 C61)

Stage Group (Gold Standard)	Stage Group (Rapid)				
	1	2	3	4	Unknown
1	86.4%	9.3%	4.1%	1.2%	39.6%
2	6.7%	83.4%	2.6%	0.9%	6.7%
3	4.3%	4.2%	86.8%	2.7%	13.7%
4	0.8%	0.7%	4.0%	93.3%	17.3%
U	1.9%	2.4%	2.6%	2.0%	22.7%

j. stomach (ICD-10 C16)

Stage Group (Gold Standard)	Stage Group (Rapid)				
	1	2	3	4	Unknown
1	67.5%	4.7%	0.7%	0.1%	6.7%
2	19.2%	66.5%	10.3%	0.8%	5.6%
3	6.0%	18.2%	69.6%	3.1%	9.4%
4	1.9%	6.4%	15.4%	94.0%	31.9%
U	5.4%	4.2%	3.9%	2.0%	46.4%

k. uterus (ICD-10 C54-C55)

Stage Group (Gold Standard)	Stage Group (Rapid)				
	1	2	3	4	Unknown
1	97.6%	11.0%	5.8%	7.4%	46.6%

Stage Group (Gold Standard)	Stage Group (Rapid)				
	1	2	3	4	Unknown
2	0.6%	83.7%	1.2%	2.2%	4.2%
3	0.5%	2.2%	87.8%	6.6%	7.1%
4	0.2%	1.6%	2.3%	77.2%	8.4%
U	1.1%	1.6%	2.9%	6.6%	33.6%

l. pancreas (ICD-10 C25)

Stage Group (Gold Standard)	Stage Group (Rapid)				
	1	2	3	4	Unknown
1	73.9%	3.6%	0.9%	0.3%	8.7%
2	15.3%	75.3%	2.4%	0.5%	6.0%
3	4.5%	11.9%	89.3%	0.6%	6.5%
4	3.4%	6.2%	6.1%	97.7%	47.9%
U	2.8%	3.1%	1.2%	0.8%	30.9%

m. lymphoma (ICD-10 C81-86)

Stage Group (Gold Standard)	Stage Group (Rapid)				
	1	2	3	4	Unknown
1	90.2%	1.3%	0.4%	0.4%	13.8%
2	1.0%	93.3%	1.3%	0.5%	11.3%
3	0.5%	1.3%	90.3%	1.5%	14.1%
4	6.4%	2.6%	7.1%	95.8%	35.9%
U	1.9%	1.6%	0.9%	1.8%	25.0%

## "Early" vs "Late" stage

Below in table 6 we repeat the above tabulations but now grouping Rapid and Gold Standard cancers into "Early" (TNM stage group 1 & 2) or "Late" (TNM stage group 3 & 4) categories. We see that 62% of breast cancers are identified as "Early" stage in the Rapid Registrations dataset compared to 76% in the Gold Standard Registration data due to the higher proportion of "Unknown" stage tumours (28% vs 10% respectively).

As with the more detailed stage data, there is a high degree of concordance between the gold standard and rapid registration stage fields if a known stage can be identified.

Table 6: Summary proportions of "Early" vs "Late" stage for Rapid Registrations and Gold Standard Registrations

Broad Cancer Group	Stage Group	Count (Rapid)	Percentage (Rapid)	Count (Gold Standard)	Percentage (Gold Standard)
Bladder	Early	4113	42.9%	4747	49.5%
Bladder	Late	814	8.5%	1542	16.1%
Bladder	Unknown	4669	48.7%	3307	34.5%
Breast	Early	27031	61.8%	33003	75.4%
Breast	Late	4367	10.0%	5618	12.8%
Breast	Unknown	12353	28.2%	5130	11.7%
Colorectum	Early	11952	36.4%	13234	40.3%
Colorectum	Late	13341	40.7%	16762	51.1%

Broad Cancer Group	Stage Group	Count (Rapid)	Percentage (Rapid)	Count (Gold Standard)	Percentage (Gold Standard)
Colorectum	Unknown	7516	22.9%	2813	8.6%
Kidney	Early	2823	34.2%	3905	47.3%
Kidney	Late	2052	24.9%	3233	39.2%
Kidney	Unknown	3373	40.9%	1110	13.5%
Lung	Early	8764	24.3%	9344	25.9%
Lung	Late	22214	61.5%	24826	68.8%
Lung	Unknown	5128	14.2%	1936	5.4%
Lymphoma	Early	1775	15.6%	3179	27.9%
Lymphoma	Late	3680	32.3%	6639	58.3%
Lymphoma	Unknown	5929	52.1%	1566	13.8%
Melanoma	Early	8728	66.2%	10923	82.8%
Melanoma	Late	637	4.8%	1386	10.5%
Melanoma	Unknown	3829	29.0%	885	6.7%
Oesophagus	Early	1796	21.5%	1421	17.0%
Oesophagus	Late	4338	51.9%	5409	64.8%
Oesophagus	Unknown	2217	26.5%	1521	18.2%
Ovary	Early	1374	27.0%	1750	34.4%
Ovary	Late	1867	36.7%	2682	52.7%
Ovary	Unknown	1851	36.4%	660	13.0%
Pancreas	Early	969	12.1%	1473	18.4%
Pancreas	Late	2764	34.5%	5166	64.4%
Pancreas	Unknown	4286	53.4%	1380	17.2%
Prostate	Early	17132	37.0%	22832	49.3%
Prostate	Late	15994	34.5%	19763	42.7%
Prostate	Unknown	13201	28.5%	3732	8.1%
Stomach	Early	675	17.6%	787	20.5%
Stomach	Late	1709	44.5%	2301	59.9%
Stomach	Unknown	1458	37.9%	754	19.6%
Uterus	Early	5147	64.5%	5950	74.6%
Uterus	Late	1231	15.4%	1379	17.3%
Uterus	Unknown	1603	20.1%	652	8.2%

In Table 7a-m below the distribution of the stage allocation between the Rapid Registrations and the Gold Standard Registrations are examined, aggregated into Early and Late stage.

#### Tables 7a-m: "Early" vs "late" stage comparison between Rapid Registrations and Gold Standard Registrations

a. bladder (ICD-10 C67)

Stage Category (Gold Standard)	Stage Category (Rapid)		
	Early	Late	Unknown

Stage Category (Gold Standard)	Stage Category (Rapid)		
	Early	Late	Unknown
Early	83.2%	19.5%	25.0%
Late	9.1%	74.9%	12.0%
Unknown	7.7%	5.5%	63.1%

b. breast (ICD-10 C50)

Stage Category (Gold Standard)	Stage Category (Rapid)		
	Early	Late	Unknown
Early	94.6%	13.6%	55.4%
Late	2.1%	82.1%	11.9%
Unknown	3.3%	4.3%	32.7%

c. colorectum (ICD-10 C18-C20)

Stage Category (Gold Standard)	Stage Category (Rapid)		
	Early	Late	Unknown
Early	88.9%	5.2%	25.4%
Late	9.1%	93.3%	42.9%
Unknown	1.9%	1.5%	31.7%

d. kidney (ICD-10 C64)

Stage Category (Gold Standard)	Stage Category (Rapid)		
	Early	Late	Unknown
Early	90.7%	3.6%	37.7%
Late	3.4%	93.2%	36.3%
Unknown	5.8%	3.2%	26.1%

e. lung (ICD-10 C33-C34)

Stage Category (Gold Standard)	Stage Category (Rapid)		
	Early	Late	Unknown
Early	94.9%	1.4%	13.8%
Late	4.3%	98.0%	52.3%
Unknown	0.8%	0.6%	33.9%

f. melanoma (ICD-10 C43)

Stage Category (Gold Standard)	Stage Category (Rapid)		
	Early	Late	Unknown
Early	92.1%	17.9%	72.3%
Late	5.2%	75.2%	11.8%
Unknown	2.7%	6.9%	15.9%

g. Oesophagus (ICD-10 C15)

Stage Category (Gold Standard)	Stage Category (Rapid)		
	Early	Late	Unknown
Early	60.1%	2.3%	10.8%
Late	34.3%	90.0%	40.0%
Unknown	5.6%	7.6%	49.2%

h. ovary (ICD-10 C56-C57)

Stage Category (Gold Standard)	Stage Category (Rapid)		
	Early	Late	Unknown
Early	97.4%	1.0%	21.3%
Late	1.4%	95.9%	47.2%
Unknown	1.2%	3.2%	31.6%

i. prostate (ICD-10 C61)

Stage Category (Gold Standard)	Stage Category (Rapid)		
	Early	Late	Unknown
Early	92.9%	5.0%	46.3%
Late	5.0%	92.6%	31.0%
Unknown	2.0%	2.4%	22.7%

j. stomach (ICD-10 C16)

Stage Category (Gold Standard)	Stage Category (Rapid)		
	Early	Late	Unknown
Early	78.5%	4.5%	12.3%
Late	16.7%	92.8%	41.3%
Unknown	4.7%	2.7%	46.4%

k. uterus (ICD-10 C54-C55)

Stage Category (Gold Standard)	Stage Category (Rapid)		
	Early	Late	Unknown
Early	97.8%	8.0%	50.8%
Late	1.0%	87.6%	15.5%
Unknown	1.1%	4.4%	33.6%

l. pancreas (ICD-10 C25)

Stage Category (Gold Standard)	Stage Category (Rapid)		
	Early	Late	Unknown
Early	82.7%	1.6%	14.7%
Late	14.3%	97.5%	54.4%
Unknown	3.0%	0.9%	30.9%

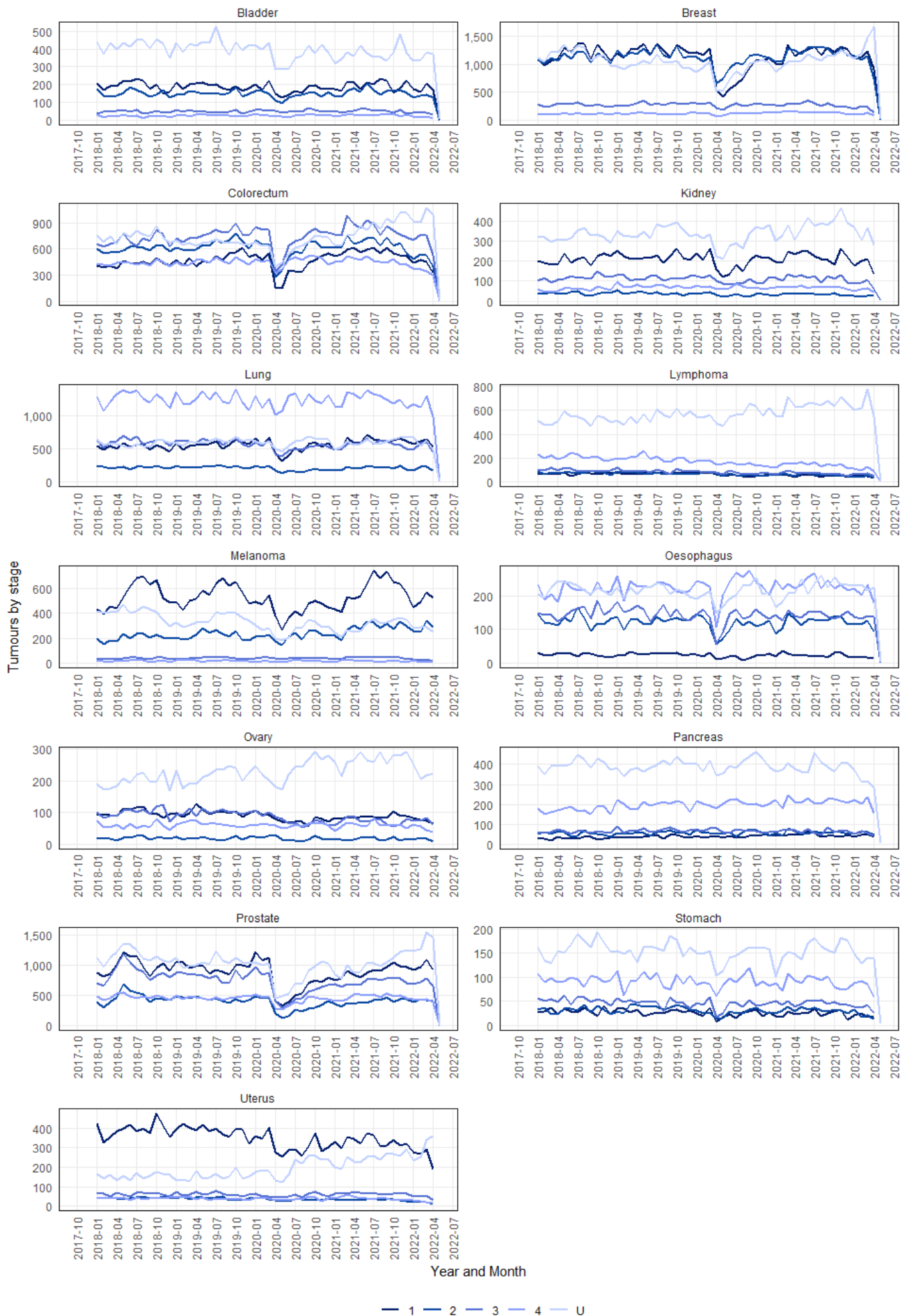
Stage Category (Gold Standard)	Stage Category (Rapid)		
	Early	Late	Unknown
Early	93.0%	1.2%	25.1%
Late	5.3%	97.3%	50.0%
Unknown	1.7%	1.5%	25.0%

Stage trends over time

Figure 13 shows the monthly variation of the incidence count by stage at diagnosis for a number of common cancers. Allowing for variation in the number of working days in each month (which affects the overall number of tumours diagnosed per month) and for statistical fluctuation there is little evidence of any stage shift in the period displayed. The feature around May 2018 in the prostate cancer trends can be ascribed to the so called 'Turnbull-Fry effect' (<https://www.ndrs.nhs.uk/examining-the-fry-and-turnbull-effect-on-prostate-cancer-incidence-in-england/>).

Figure 13: Stage trends over time



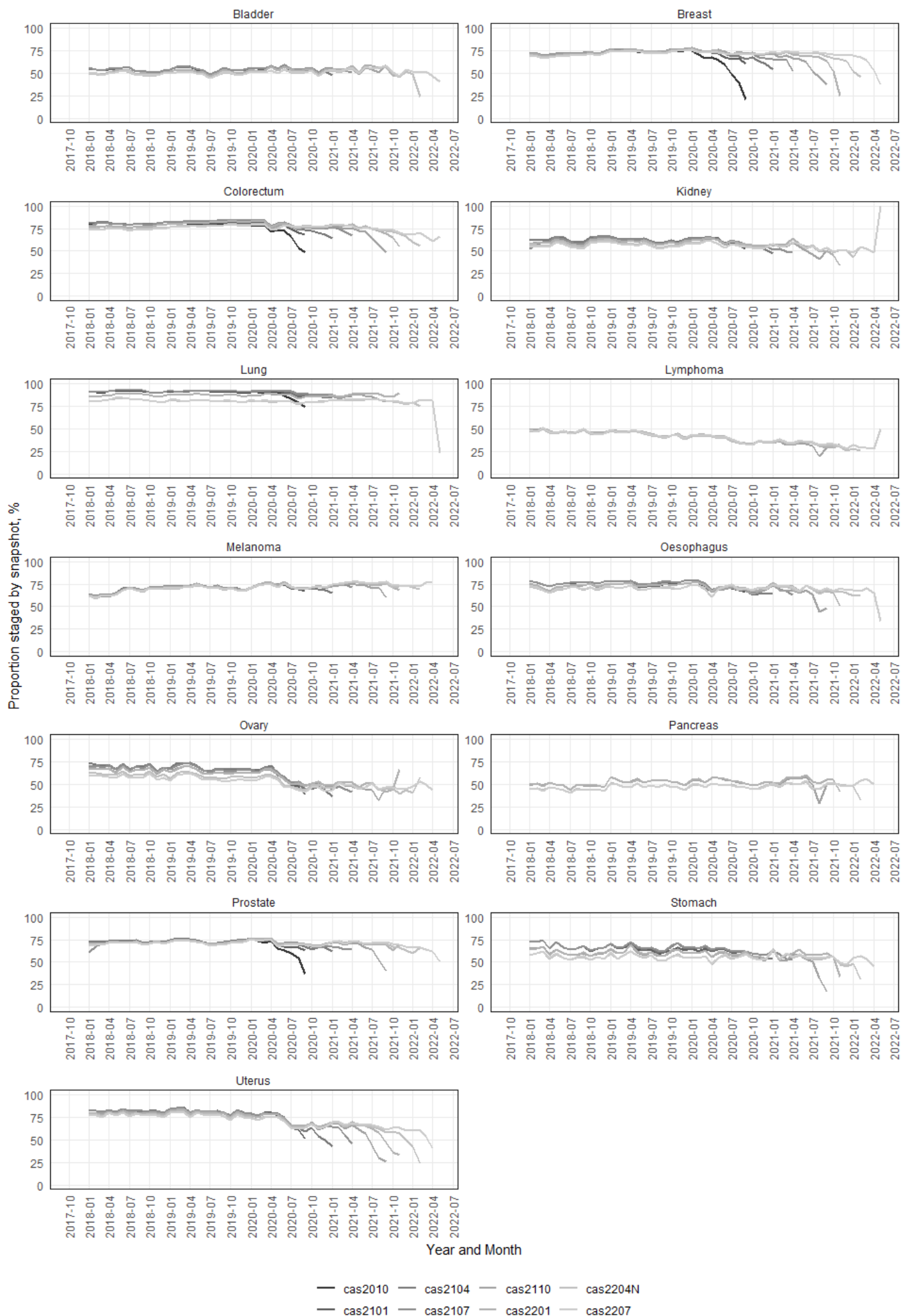


Source: NHS Digital, National Cancer Registration and Analysis Service

Stage completeness by snapshot

Figure 14 shows the completeness of stage by tumour type for one snapshot per quarter. Stage completeness continues to increase and lags behind the incidence completeness due to staging activity happening up to several months after diagnosis.

Figure 14: Stage completeness by snapshot

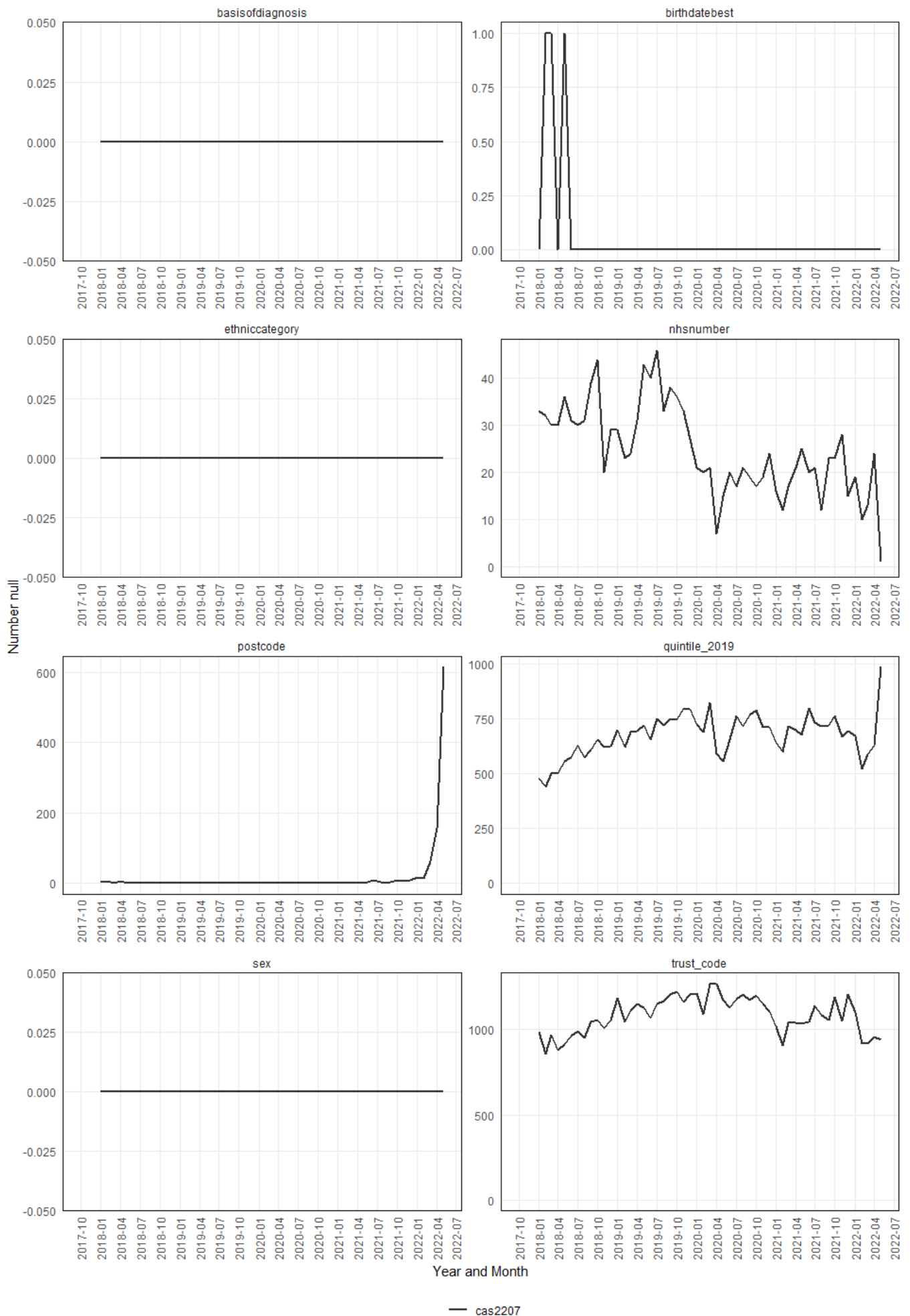


Source: NHS Digital, National Cancer Registration and Analysis Service

Counts of missing data

Figure 15 shows the count of tumours per month where the indicated data item is missing. Larger counts in the most recent months are to be expected.

Figure 15: Counts of missing data

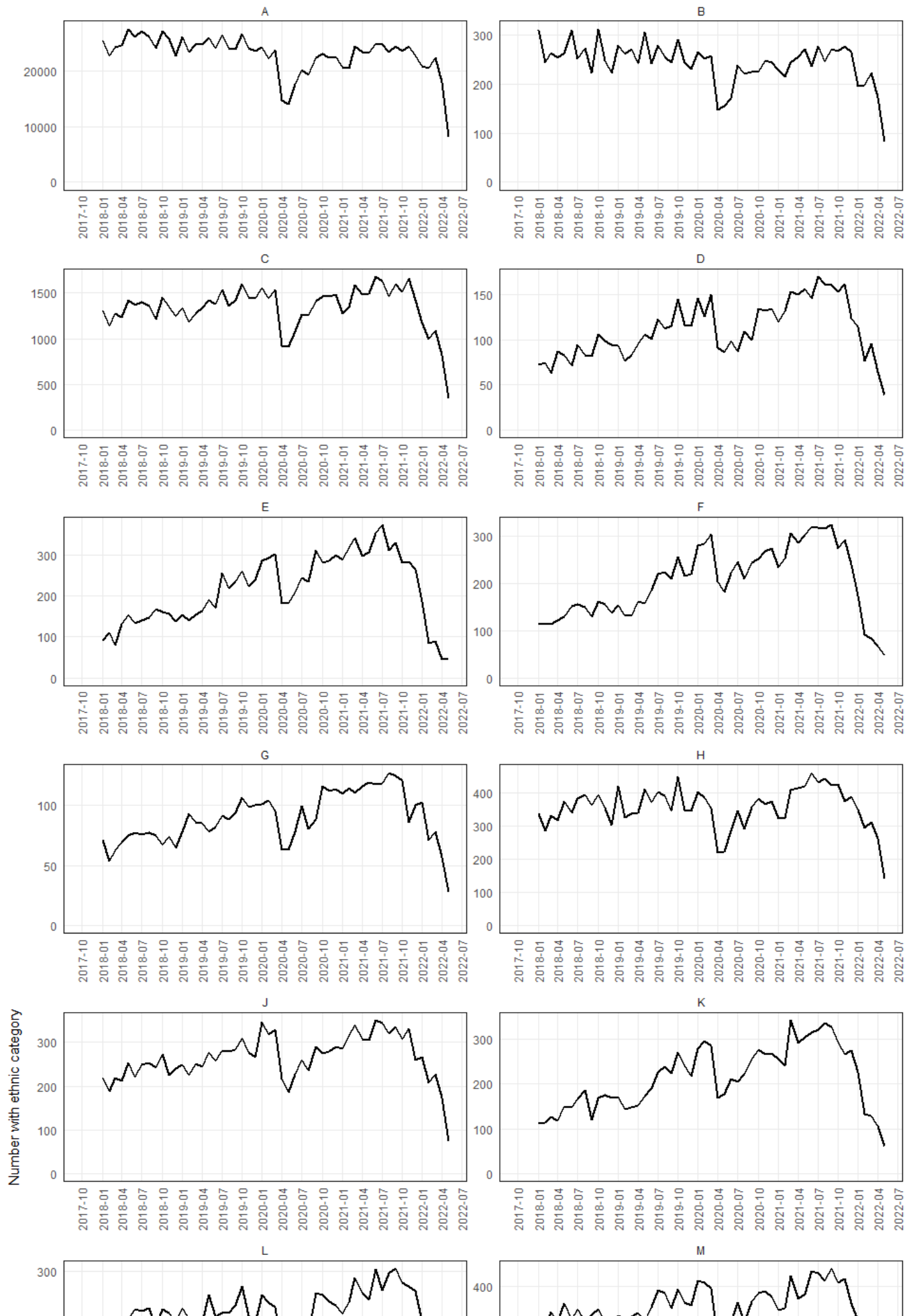


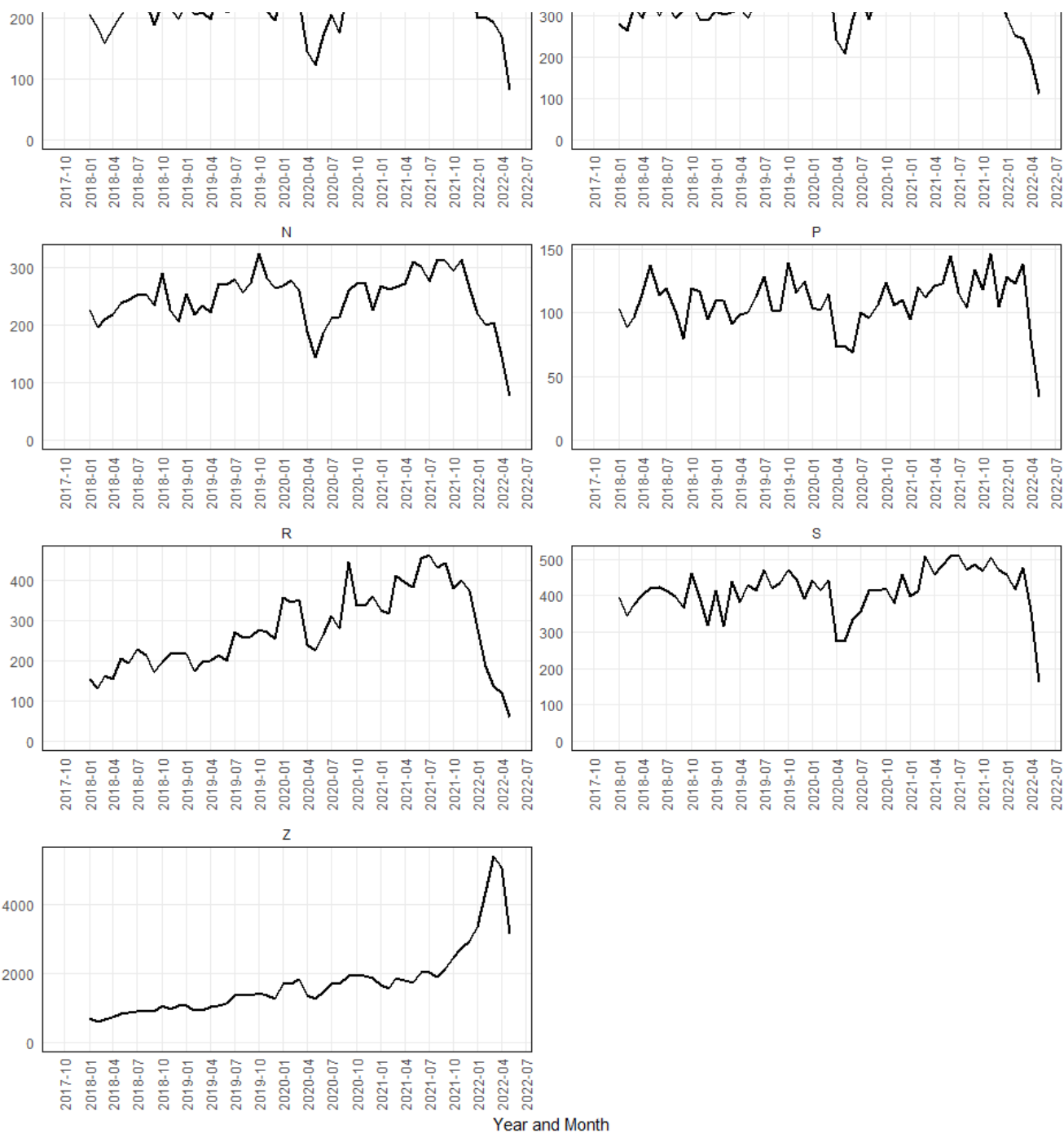
Source: NHS Digital, National Cancer Registration and Analysis Service

Ethnicity completeness

Figure 16 shows the count of tumours per month where the indicated data item is missing. Larger counts in the most recent months are to be expected.

Figure 16: Ethnicity completeness



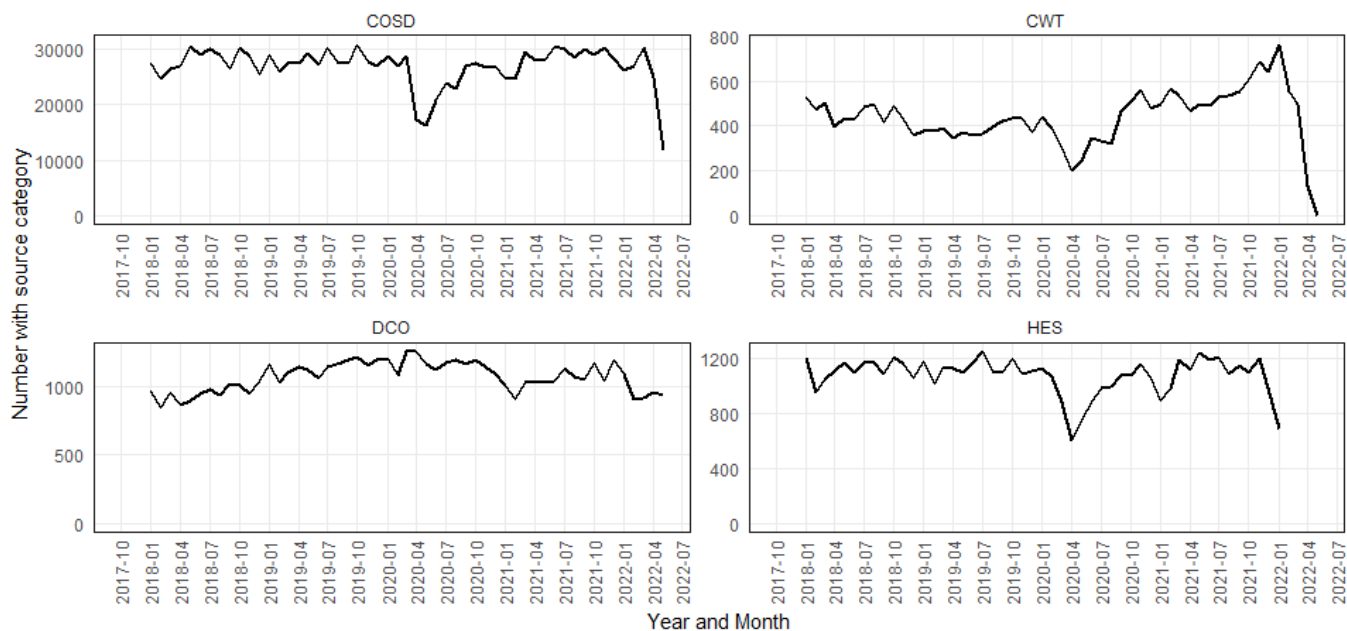


Source: NHS Digital, National Cancer Registration and Analysis Service

## Tumour source

Figure 17 shows the proportion of tumours created by the source of the diagnosis - i.e., which dataset was used to create them, by month

Figure 17: Tumour source dataset

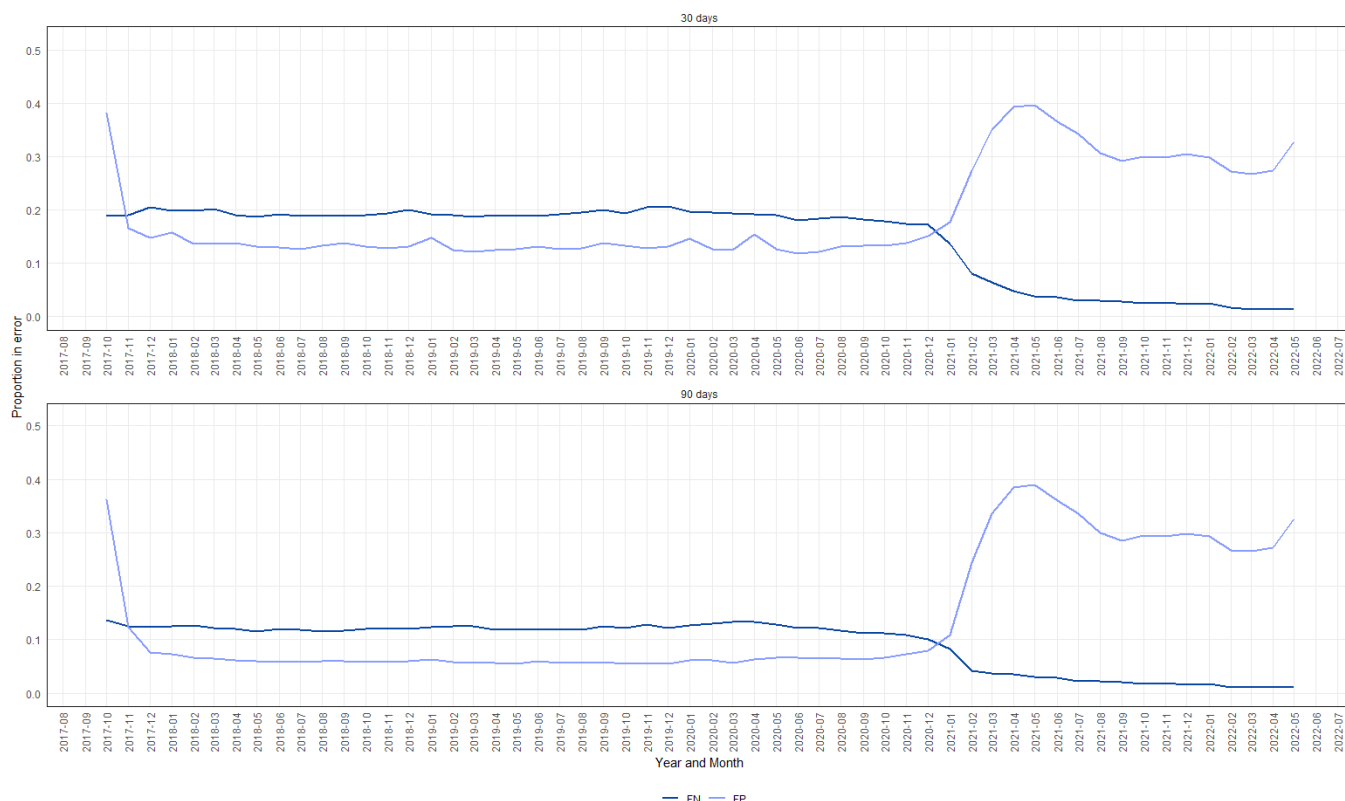


Source: NHS Digital, National Cancer Registration and Analysis Service

## False positive and false negative proportion by month

Figure 18 shows the False Negative and False Positive error proportions by month for the broader matching criteria and a matching period of 90 and 30 days.

Figure 18: Monthly False Positive and False Negative proportions



Source: NHS Digital, National Cancer Registration and Analysis Service

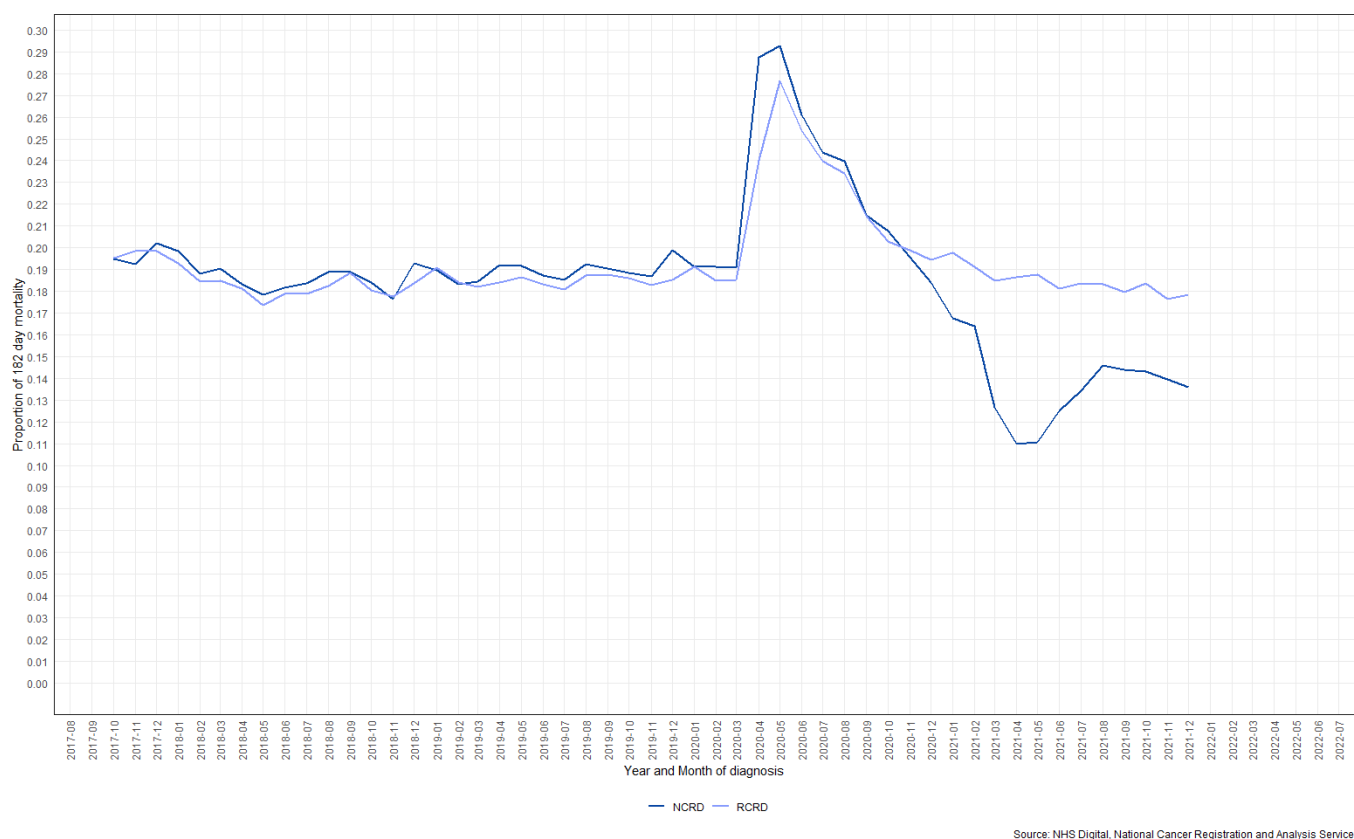
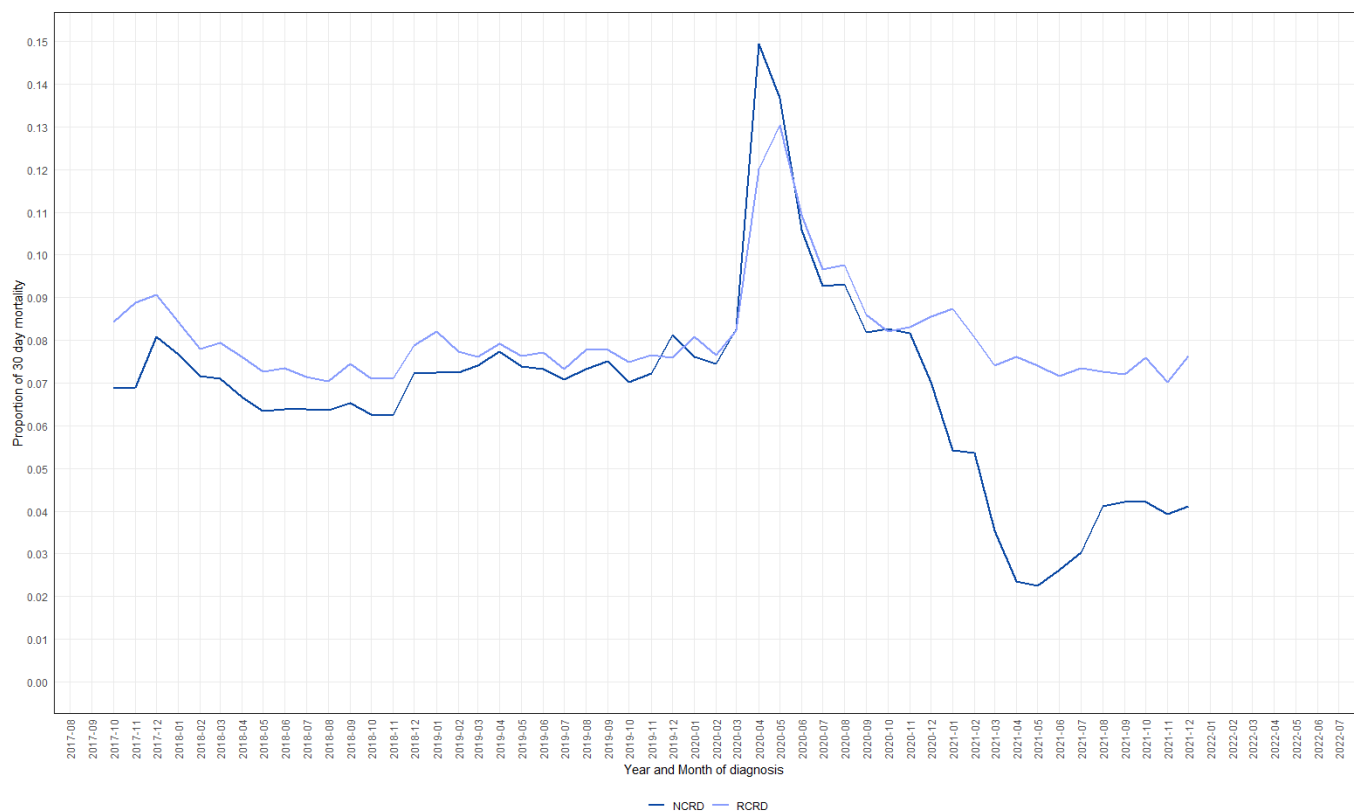
## Mortality proportion by month

Figure 19 shows the mortality proportions by month mortality within 30 and 182 days in the RCRD compared to the NCRD, for all cancers included in RCRD excl C44 and D06.

Figure 19: Monthly mortality proportions at 30 and 182 days,

There were 39 warnings (use warnings() to see them)





## Appendix 1 - List of pathway events

Table A1: AT\_RAPID\_PATHWAY: event list

EVENT_TYPE	EVENT_DESC	EVENT_PROPERTY_1	EVENT_PROPERTY_2	EVENT_PROPERTY_3	EVENT_DATE	Linkage
1	CWT Treatment Period Start Date	CWT First Treatment Flag	CWT SITE_ICD10	CWT Cancer Treatment Event Type	Treat period start	NHSNUMBER

EVENT_TYPE	EVENT_DESC	EVENT_PROPERTY_1	EVENT_PROPERTY_2	EVENT_PROPERTY_3	EVENT_DATE	Linkage
2	CWT Treatment Start	CWT Treatment Modality	CWT Cancer Treatment Event type		Treatment start date	NHSNUMBER
3	CWT MDT Begin	CWT MDT Cancer Care Plan discussed indicator			MDT date	NHSNUMBER
4	CWT Faster Diagnosis Period End	(null)	Faster Diagnosis Period site		Faster Diagnosis Period end date	NHSNUMBER
5	HES Admitted Patient Care Episode	Treatment speciality	All ICD-10 codes (for episode)	All OPCS-4 codes (for episode)	Episode Start date - Episode end date	NHSNUMBER
6	HES Admitted Patient Care Operation	OPCS codes (for date) in POS order	ICD-10 codes (for episode)		Operation date	NHSNUMBER
7	SACT Cycle	Benchmark group	Cycle number	Treatment intent	Cycle start date	PATIENTID
8	RTDS Episode	Radiotherapy intent	ICD-10 diagnosis code		Episode treatment start date	PATIENTID
9	Tumour diagnosis (Provisional)	Statusofregistration	ICD-10 diagnosis code	Stage_best	Diagnosisdatebest	PATIENTID
10	Patient last event date	Vitalstatus			Dateofvitalstatus1 (start of range)	PATIENTID
11	HES major surgery (historical)	OPCS-4 code	ICD-10 diagnosis code	Further notes/constraints	Operation date	NHSNUMBER
12	HES major surgery (historical, further constraints)	OPCS-4 code	ICD-10 diagnosis code	Further notes/constraints	Operation date	NHSNUMBER
13	HES major surgery (new)	OPCS-4 code	ICD-10 diagnosis code	Further notes/constraints	Operation date	NHSNUMBER
14	RAWDATA major surgery (historical)	OPCS-4 code	ICD-10 diagnosis code	Further notes/constraints	Operation date	PATIENTID
15	RAWDATA major surgery (historical, further constraints)	OPCS-4 code	ICD-10 diagnosis code	Further notes/constraints	Operation date	PATIENTID
16	RAWDATA major surgery (new)	OPCS-4 code	ICD-10 diagnosis code	Further notes/constraints	Operation date	PATIENTID
17	Prior tumour diagnosis	Statusofregistration	ICD-10 diagnosis code	Stage_best	Diagnosisdatebest	PATIENTID
18	Tumour diagnosis (Final)	Statusofregistration	ICD-10 diagnosis code	Stage_best	Diagnosisdatebest	PATIENTID
19	Patient vital status date	Vitalstatus	ICD-10 underlying cause of death		Vitalstatusdate	PATIENTID

EVENT_TYPE	EVENT_DESC	EVENT_PROPERTY_1	EVENT_PROPERTY_2	EVENT_PROPERTY_3	EVENT_DATE	Linkage
20	RAWDATA holistic needs assessment record	HNA point of pathway **	Primary diagnosis	Laterality	Date of HNA	PATIENTID
21	RAWDATA staging	Inferred best stage	ICD-10 diagnosis code	TNM components	Collected stage date	PATIENTID
22	CWT First Seen	REF_SOURCE	Categorisation of TWW, screening and consultant upgrade cases, where relevant	Suspected cancer referral type	Date first seen	NHSNUMBER
23	HES diagnostic event	OPCS-4 code	Description	BX/LD	Operation date	NHSNUMBER
50	Skeleton Tumour creation	E_base_record type	ICD-10 diagnosis code		Diagnosisdate	PATIENTID
51	Diagnosis reported in COSD	Number of times reported	ICD-10 diagnosis code	E_base_record type	Diagnosisdate	NHSNUMBER
52	CWT estimated diagnosis date	CWT First Treatment Flag	CWT SITE_ICD10	CWT Cancer Treatment Event Type	Adjusted treat period start	NHSNUMBER
53	HES inferred tumour	HES cancer group	ICD-10 diagnosis code		Episode start date	NHSNUMBER
54	COSD diagnosis submission	E_base_record primary diagnoses	ICD-10 diagnosis code (submission)		Diagnosis date (submission)	PATIENTID
55	RAWDATA biopsy record	Laterality	ICD-10 diagnosis code		Collected date/authorised date	PATIENTID
56	RAWDATA imaging record	Laterality	ICD-10 diagnosis code	Procedure_date - diagdate	Diagdate	PATIENTID
57	RAWDATA HNA diagnosis	Laterality	Primary diagnosis (ICD-10)		Diagdate	PATIENTID
101	Inferred diagnosis (54 only)	Event_property_1	ICD-10 diagnosis code	Cancer group	First recorded date	PATIENTID

\*: [https://www.datadictionary.nhs.uk/data\\_dictionary/attributes/p/prev/primary\\_cancer\\_site\\_for\\_cancer\\_faster\\_diagnosis\\_pathway\\_de.asp?shownav=0](https://www.datadictionary.nhs.uk/data_dictionary/attributes/p/prev/primary_cancer_site_for_cancer_faster_diagnosis_pathway_de.asp?shownav=0)  
([https://www.datadictionary.nhs.uk/data\\_dictionary/attributes/p/prev/primary\\_cancer\\_site\\_for\\_cancer\\_faster\\_diagnosis\\_pathway\\_de.asp?shownav=0](https://www.datadictionary.nhs.uk/data_dictionary/attributes/p/prev/primary_cancer_site_for_cancer_faster_diagnosis_pathway_de.asp?shownav=0))

\*\* : [https://www.datadictionary.nhs.uk/data\\_dictionary/attributes/h/ho/holistic\\_needs\\_assessment\\_point\\_of\\_pathway\\_for\\_cancer\\_de.asp?shownav=0](https://www.datadictionary.nhs.uk/data_dictionary/attributes/h/ho/holistic_needs_assessment_point_of_pathway_for_cancer_de.asp?shownav=0) ([https://www.datadictionary.nhs.uk/data\\_dictionary/attributes/h/ho/holistic\\_needs\\_assessment\\_point\\_of\\_pathway\\_for\\_cancer\\_de.asp?shownav=0](https://www.datadictionary.nhs.uk/data_dictionary/attributes/h/ho/holistic_needs_assessment_point_of_pathway_for_cancer_de.asp?shownav=0))

## Appendix 2 - List of Rapid Registration fields available

Table A2: AT\_RAPID\_TUMOUR: field list

COLUMN_NAME	DATA_TYPE	Notes
INDIVIDUALID	NUMBER(11,0)	Matches AT_RAPID_PATHWAY for each event with event_type=101

COLUMN_NAME	DATA_TYPE	Notes
PATIENTID	NUMBER(19,0)	Matches AT_RAPID_PATHWAY for each event with event_type=101
NHSNUMBER	VARCHAR2(12 BYTE)	Matches AT_RAPID_PATHWAY for each event with event_type=101
TUMOUR_AVPID	NUMBER	Matches AT_RAPID_PATHWAY for each event with event_type=101
DIAGNOSISDATE	DATE	Matches AT_RAPID_PATHWAY for each event with event_type=101
TUMOUR_SITE	VARCHAR2(255 BYTE)	Matches AT_RAPID_PATHWAY for each event with event_type=101 (event_property_2)
BIRTHDATEBEST	DATE	Taken from Encore
SEX	VARCHAR2(255 BYTE)	Taken from Encore
POSTCODE	VARCHAR2(255 BYTE)	Taken from Encore
SURNAME	VARCHAR2(64 BYTE)	Taken from Encore
FORENAME	VARCHAR2(64 BYTE)	Taken from Encore
STAGE	VARCHAR2(255 BYTE)	Defined for selected cancer sites
ETHNICITY	VARCHAR2(255 BYTE)	Taken from Encore
FINAL_ROUTE	VARCHAR2(22 BYTE)	Final Route to Diagnosis using an adapted version of the standard NCRAS methodology
QUINTILE_2019	VARCHAR2(26 BYTE)	Index of Multiple Deprivation quintile defined using the standard NCRAS methodology
CHRL_TOT_27_03	NUMBER	Charlson score defined using the standard NCRAS methodology
TUMOUR_MORPHOLOGY	VARCHAR2(255 BYTE)	Tumour morphology as recorded in the COSD system
TUMOUR_PERFORMANCESTATUS	VARCHAR2(4 BYTE)	Patient performance status at time of diagnosis
BASISOFDIAGNOSIS	VARCHAR2(260 CHAR)	The basis of diagnosis (e.g. clinical; pathological; etc.)
LSOA11	VARCHAR2(27 BYTE)	LSOA of residence at time of diagnosis
SOURCE	VARCHAR2(7 BYTE)	The dataset used as the primary source for the RCRD registration
SOURCE_ID	VARCHAR2(64 BYTE)	The unique ID of the record used as the primary source for the RCRD registration

## Appendix 3 - Cancer groups used for matching

Table A3: Rapid Registration ICD-10 tumour inclusion list

ICD	CANCER_GROUP	ICD	CANCER_GROUP
C00	Head & Neck	C54	Gynae
C01	Head & Neck	C55	Gynae
C02	Head & Neck	C56	Gynae
C03	Head & Neck	C57	Gynae

ICD	CANCER_GROUP	ICD	CANCER_GROUP
C04	Head & Neck	C58	Gynae
C05	Head & Neck	C59	Other
C06	Head & Neck	C60	Urology
C07	Head & Neck	C61	Prostate
C08	Head & Neck	C62	Urology
C09	Head & Neck	C63	Urology
C10	Head & Neck	C64	Urology
C11	Head & Neck	C65	Urology
C12	Head & Neck	C66	Urology
C13	Head & Neck	C67	Urology
C14	Head & Neck	C68	Urology
C15	O-G	C69	Brain & CNS
C16	O-G	C70	Brain & CNS
C17	Upper GI	C71	Brain & CNS
C18	Colorectal	C72	Brain & CNS
C19	Colorectal	C73	Endocrine
C20	Colorectal	C74	Endocrine
C21	Colorectal	C75	Endocrine
C22	Upper GI	C76	Unknown Primary
C23	Upper GI	C77	Unknown Primary
C24	Upper GI	C78	Unknown Primary
C25	Upper GI	C79	Unknown Primary
C26	Upper GI	C80	Unknown Primary
C27	Other	C81	Haematological
C28	Other	C82	Haematological
C29	Other	C83	Haematological
C30	Head & Neck	C84	Haematological
C31	Head & Neck	C85	Haematological
C32	Head & Neck	C86	Haematological
C33	Lung	C87	Haematological
C34	Lung	C88	Haematological
C35	Other	C89	Haematological
C36	Other	C90	Haematological
C37	Other	C91	Haematological
C38	Lung	C92	Haematological
C39	Lung	C93	Haematological

ICD	CANCER_GROUP	ICD	CANCER_GROUP
C40	Bone & ST	C94	Haematological
C41	Bone & ST	C95	Haematological
C42	Other	C96	Haematological
C43	Melanoma	C97	Unknown Primary
C44	NMSC	D05	Breast
C45	Lung	D06	Gynae
C46	Bone & ST	D09	Urology
C47	Brain & CNS	D32	Brain & CNS
C48	Gynae	D33	Brain & CNS
C49	Bone & ST	D35	Brain & CNS
C50	Breast	D41	Urology
C51	Gynae	D42	Brain & CNS
C52	Gynae	D43	Brain & CNS
C53	Gynae	D44	Brain & CNS

## Appendix 4 - Alternative defining events

Several options were considered as to the defining events for the Rapid Registrations. Both standalone datasets, subsets of standalone datasets, and combined datasets were explored and their FNE and FPE figures quantified. A subset of these alternatives are presented below as a demonstration of the process but the majority of this exploratory work is out of scope for this document.

Candidates for diagnosis events from the three main datasets that are rapidly available and have nominally full coverage of cancer patients are shown below (SACT and RTDS were also examined but data is not presented). Of the three, the CWT data has the best FPE but the FNE is substantially higher than the COSD dataset. HES produced the worst results in both measures. A filtering process was applied to the standalone COSD data to remove apparently new diagnoses that were actually recurrences of prior tumours. This improved the FPE at a cost of increasing the FNE. We continue to test whether this process can be further refined to improve the combined FPE and FNE figures, and monitor changes in the underlying datasets that might also give new opportunities to do so.

Table A4: Rapid Cancer Registrations: alternative defining events

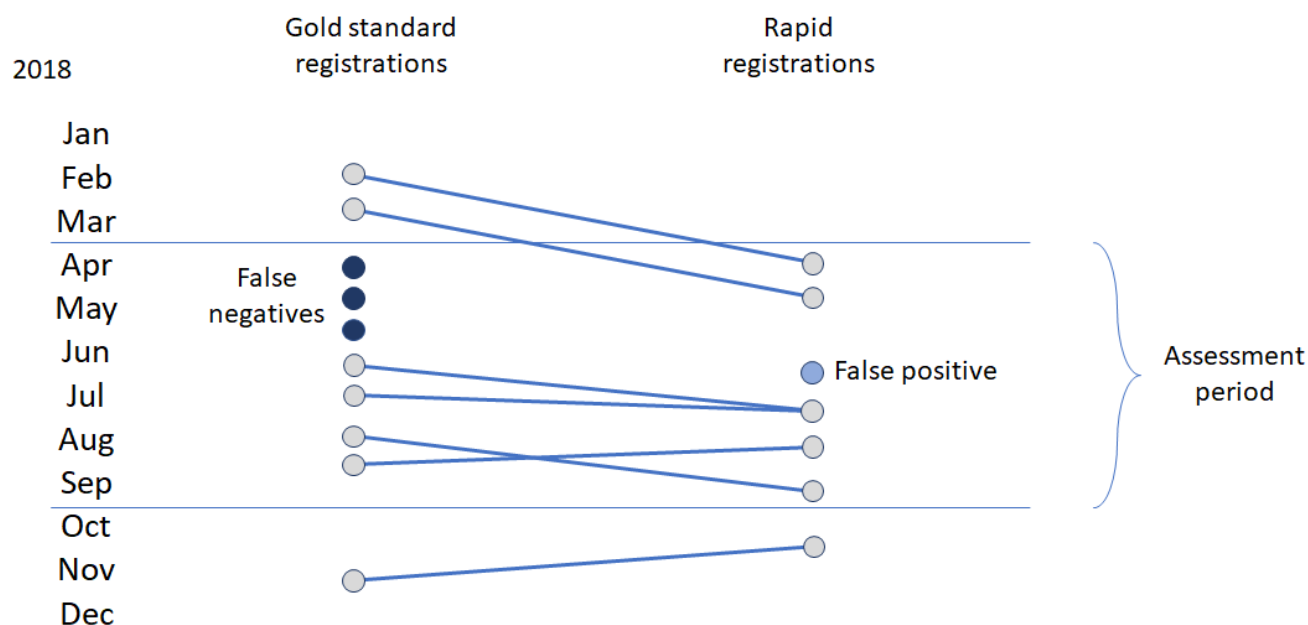
Event	FPE	FNE
Event 52 - standalone CWT	7.6%	28.3%
Event 53 - standalone HES	13.2%	38.9%
Event 54 - standalone COSD	8.1%	15.8%
Event 101 (up to cas2106) - filtered COSD	5.2%	17.7%
Event 101 (cas2107) - filtered combined COSD/CWT	5.6%	16.4%
Event 101 (cas2108) - filtered combined COSD/CWT	5.1%	16.5%
Event 101 (cas2109) - filtered combined COSD/CWT	5.1%	16.6%
Event 101 (cas2110) - filtered combined COSD/CWT/HES	5.1%	14.7%
Event 101 (cas2111) - filtered combined COSD/CWT/HES	6.2%	13.4%
Event 101 (cas2112 to cas2202) - filtered combined COSD/CWT/HES and Death Certificates Only	5.3%	13.4%
Event 101 (cas2203 to cas2204) - filtered combined COSD/CWT/HES and Death Certificates Only	6.3%	12.2%
Event 101 (cas2205) - filtered combined COSD/CWT/HES and Death Certificates Only	6.1%	12.3%
Event 101 (cas2206) - filtered combined COSD/CWT/HES and Death Certificates Only	5.6%	12.5%

Event	FPE	FNE
Event 101 (cas2207) - filtered combined COSD/CWT/HES and Death Certificates Only	6.0%	11.8%

## Appendix 5 - Counts and error tabulations

Figure A1 shows an example for a very small dataset of how counts and error proportions are derived. This dataset has 10 Gold Standard Registrations and 7 Rapid Registrations overall (both indicated by the dots in the figure, with time running vertically over the course of 2018 and Gold Standard vs Rapid Registrations divided horizontally). Successful linkages between Gold Standard and Rapid Registrations are indicated by blue lines. False negatives and false positives are indicated. Only tumours in the 6-month assessment period are included in the tabulations below, although these can link to tumours outside the period as shown, and many-to-one linkages are also allowed. The false negative rate is therefore 3 in 7 and the false positive rate 1 in 6 below.

Figure A1: Illustration of counts and errors tabulation



Tables A5 and A6 below tabulate counts of Gold Standard and Rapid Registrations together with the numbers of false positive and false negative errors. When considering comparisons between figures the nature of the linkage and relationships displayed in the diagram above should be kept in mind.

Table A5: Counts and errors tabulation by cancer group

Cancer group	Gold Standard (GS) Registrations	Rapid Registrations	Difference	Percentage Rapid/GS	FPE	FNE
Brain & CNS	5511	5154	357	93.5%	1068	1429
Breast	28904	26842	2062	92.9%	2037	3123
Colorectal	18942	17816	1126	94.1%	2509	3372
Endocrine	1897	1680	217	88.6%	450	647
Gynae	9761	9391	370	96.2%	1533	1824
Haematological	13863	12162	1701	87.7%	1933	3622
Head & Neck	5276	4894	382	92.8%	806	1141
Lung	21624	20139	1485	93.1%	2647	4046
Melanoma	8239	7688	551	93.3%	1131	1512
O-G	6617	6490	127	98.1%	694	788
Prostate	26997	25195	1802	93.3%	1367	3246
Bone & Soft Tissue	1135	1103	32	97.2%	481	502

Cancer group	Gold Standard (GS) Registrations	Rapid Registrations	Difference	Percentage Rapid/GS	FPE	FNE
Unknown Primary	3418	2674	744	78.2%	1068	1809
Upper GI	9217	8777	440	95.2%	1829	2290
Urology	16950	14657	2293	86.5%	2280	4415

Table A6: Counts and errors tabulation by cancer site

Cancer site	Gold Standard (GS) Registrations	Rapid Registrations	Difference	Percentage Rapid/GS	FPE	FNE
C00	109	148	-39	135.8%	75	35
C01	645	461	184	71.5%	66	130
C02	604	617	-13	102.2%	59	125
C03	233	106	127	45.5%	16	85
C04	253	240	13	94.9%	29	51
C05	214	187	27	87.4%	22	45
C06	270	287	-17	106.3%	50	71
C07	236	283	-47	119.9%	146	100
C08	82	91	-9	111.0%	27	27
C09	913	766	147	83.9%	80	156
C10	150	227	-77	151.3%	26	39
C11	111	106	5	95.5%	19	28
C12	155	99	56	63.9%	13	22
C13	142	129	13	90.8%	14	26
C14	25	64	-39	256.0%	19	14
C15	3998	4325	-327	108.2%	328	406
C16	2619	2165	454	82.7%	366	382
C17	807	717	90	88.8%	218	312
C18	12418	11743	675	94.6%	1787	2407
C19	997	949	48	95.2%	116	161
C20	4883	4484	399	91.8%	469	716
C21	644	640	4	99.4%	137	88
C22	2630	2541	89	96.6%	657	778
C23	472	476	-4	100.8%	73	98
C24	642	525	117	81.8%	85	142
C25	4517	4200	317	93.0%	554	878
C26	149	318	-169	213.4%	242	82
C30	162	151	11	93.2%	31	41
C31	92	64	28	69.6%	11	30
C32	880	868	12	98.6%	103	116
C33	13	12	1	92.3%	1	4



Cancer site	Gold Standard (GS) Registrations	Rapid Registrations	Difference	Percentage Rapid/GS	FPE	FNE
C34	20169	18769	1400	93.1%	2407	3695
C37	167	86	81	51.5%	29	81
C38	71	355	-284	500.0%	74	29
C39	NA	13	NA	NA%	5	NA
C40	118	106	12	89.8%	19	31
C41	116	150	-34	129.3%	96	59
C43	8239	7688	551	93.3%	1131	1512
C45	1204	904	300	75.1%	131	237
C46	68	40	28	58.8%	9	34
C47	26	14	12	53.8%	7	21
C48	284	460	-176	162.0%	186	97
C49	833	807	26	96.9%	357	378
C50	25082	23992	1090	95.7%	1784	2524
C51	640	590	50	92.2%	115	152
C52	94	106	-12	112.8%	27	21
C53	1317	1278	39	97.0%	153	236
C54	4094	3726	368	91.0%	436	545
C55	72	324	-252	450.0%	55	22
C56	2982	2567	415	86.1%	476	691
C57	268	314	-46	117.2%	65	58
C58	10	26	-16	260.0%	20	2
C60	303	293	10	96.7%	77	88
C61	26997	25195	1802	93.3%	1367	3246
C62	1053	1056	-3	100.3%	101	99
C63	31	16	15	51.6%	10	26
C64	4825	4381	444	90.8%	998	1463
C65	411	322	89	78.3%	90	170
C66	356	258	98	72.5%	48	165
C67	4465	5046	-581	113.0%	514	951
C68	95	55	40	57.9%	12	55
C69	369	328	41	88.9%	62	93
C70	20	44	-24	220.0%	5	2
C71	2258	2115	143	93.7%	228	304
C72	78	89	-11	114.1%	39	20
C73	1725	1513	212	87.7%	352	547
C74	115	117	-2	101.7%	59	56

Cancer site	Gold Standard (GS) Registrations	Rapid Registrations	Difference	Percentage Rapid/GS	FPE	FNE
C75	57	50	7	87.7%	39	44
C76	94	233	-139	247.9%	142	62
C77	273	139	134	50.9%	84	163
C78	598	56	542	9.4%	29	371
C79	229	132	97	57.6%	64	142
C80	2224	2114	110	95.1%	749	1071
C81	893	865	28	96.9%	95	151
C82	1205	1039	166	86.2%	150	288
C83	3144	2678	466	85.2%	324	643
C84	390	228	162	58.5%	63	182
C85	1365	975	390	71.4%	166	484
C86	NA	98	NA	NA%	22	NA
C88	206	348	-142	168.9%	86	86
C90	2530	2118	412	83.7%	241	658
C91	2240	1834	406	81.9%	269	677
C92	1751	1564	187	89.3%	322	395
C93	23	181	-158	787.0%	42	1
C94	27	75	-48	277.8%	60	12
C95	50	66	-16	132.0%	16	16
C96	39	93	-54	238.5%	77	29
D05	3822	2850	972	74.6%	253	599
D09	4903	1277	3626	26.0%	320	1205
D32	1363	1046	317	76.7%	181	493
D33	424	604	-180	142.5%	171	169
D35	454	572	-118	126.0%	259	146
D41	508	1953	-1445	384.4%	110	193
D42	140	17	123	12.1%	6	31
D43	263	267	-4	101.5%	81	78
D44	116	58	58	50.0%	29	72

## Appendix 6 - False negative errors and basis of diagnosis

This appendix explores the reason for the overall age-dependence of the false negative error rate.

The most common methods of confirming a diagnosis (histology and cytology) account for the lowest proportion of false negatives (Figure A2). Where diagnosis comes from specific tumour markers, the Rapid Registrations are much more likely to "miss" the significant event or events. Patients diagnosed clinically (from imaging, consultation by a doctor but without a pathological sample being taken) are also more likely to be "missed" in the Rapid Registrations dataset.

Those patients for whom a diagnosis method cannot be determined (unknown) or died before they could be offered cancer treatment (death certificate), are most likely to be "missed" in the Rapid Registrations dataset. As Figure A3 indicates though, these account for a small proportion of those falsely omitted from the Rapid Registrations.

The marked reduction in the proportion of patients having their diagnosis confirmed from a pathological specimen (histology or cytology) explains the increase often observed at older ages in Figure A3, from the age of around 70, reflecting fewer patients having an invasive procedure performed on them as age increases. This is likely to be the reason behind the increasing false negative proportions by age observed overall and in most tumour groups (Figures 5 and 6).

Figure A2: The proportion of false negative Rapid Registrations by tumour group and basis of diagnosis, England, 2018

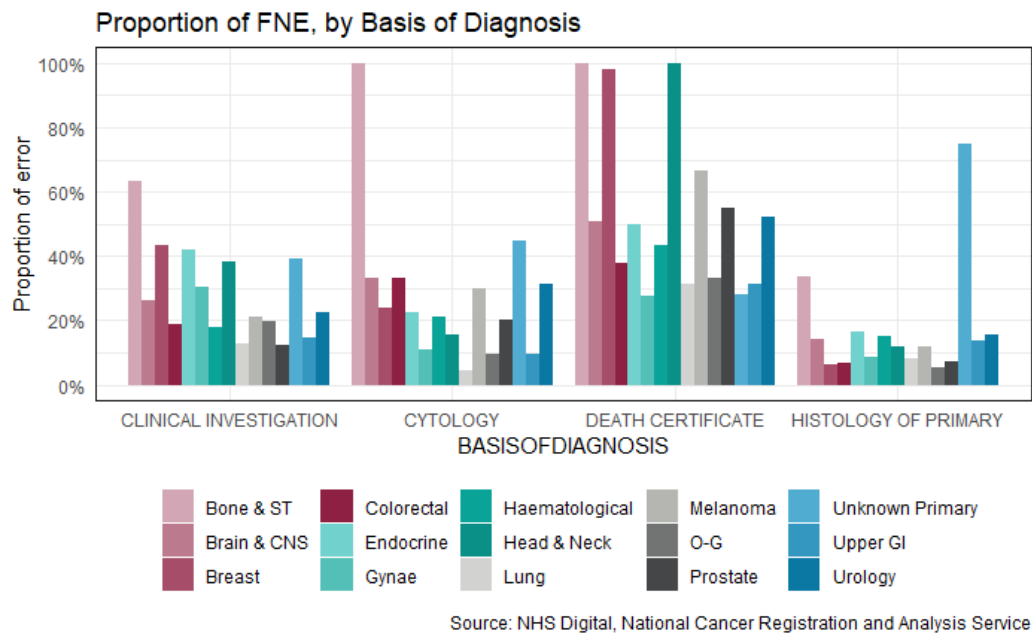


Figure A3: The proportion of false negative Rapid Registrations by method of diagnosis, England, 2018 (all tumour types combined)

