

Rapid Cancer Registration Dataset: data at 6th August 2022 (CAS2208)

The National Cancer Registration and Analysis Service (NCRAS) has developed an algorithmically generated Rapid Cancer Registration Dataset (RCRD) using the standard administrative datasets which flow rapidly into NHS Digital (NHSD) and are incorporated into the Cancer Analysis System (CAS) of NCRAS. The data takes the form of a series of significant events that occur to each patient as they proceed through the diagnostic and then therapeutic parts of the cancer pathway, and is available at approximately 4-5 months behind real time. The RCRD is shallower and narrower than the full NCRAS cancer registration dataset; it should be used and interpreted with reference to the caveats outlined within this document.

Main findings

This document outlines the main features of the data to be aware of when interpreting the Rapid Cancer Registration Dataset:

- Across all cancers types included approximately 11.6% of cases are missing and 6.0% of cases are included erroneously or with incorrect cancer type or diagnosis date (when compared to 'Gold Standard' registration data for 2018 data).
- These figures vary strongly with cancer site. Broadly, more common cancers (particularly breast and prostate cancer) perform best and less common cancers (particularly bone and soft tissue and cancers of unknown primary) perform worst.
- There are more missing tumours in those aged over 70 compared to younger age groups.
- Other factors that reduce data completeness include the patient's route to diagnosis, mortality within 30 days of diagnosis, and the presence of multiple cancers.
- Usable data is available approximately 4-5 months after diagnosis or other clinical activity occurs.
- Data on cancer stage group at diagnosis is available for a number of common tumour types, although completeness is lower than that for the Gold Standard registration data. Where data is available it generally agrees with the Gold Standard stage group in 80-90% of tumours.

The dataset includes Rapid Cancer Registrations from January 2018 to the most recently available data (at the date specified in the title to this document), plus additional event data for the same period.

Contents

Summary

Methodology

Proxy registration events (Rapid Registrations)

Data structures

Data Quality

How do the number of Rapid Registrations compare with Gold Standard Registrations?

Comparing the matching quality of Rapid Registrations

Sensitivity testing of matching criteria

Counts of events over time

Estimated completeness of Rapid Registrations and secondary datasets

Staging data in the Rapid Registrations dataset

TNM stage group 1-4

"Early" vs "Late" stage

Stage trends over time

Appendix 1 - List of pathway events

Appendix 2 - List of Rapid Registration fields available

Appendix 3 - Cancer groups used for matching

Appendix 4 - Alternative defining events

Appendix 5 - Counts and error tabulations

Appendix 6 - False negative errors and basis of diagnosis

Summary

A need to make rapidly available 'proxy cancer registrations' (and associated clinical activity) for the COVID-19 period has been identified to support the public health response by NHS Digital (PHE) and other agencies, and service reorganisation by the NHS. These proxy registrations are called Rapid Registrations in contrast to the more formal detailed registration process that are used in non-clinical cancer research and the National Statistics (<https://www.gov.uk/government/statistics/cancer-registration-statistics-england-2018-final-release>).

The National Cancer Registration and Analysis Service (NCRAS) has developed a Rapid Cancer Registration Dataset (RCRD) using all standard administrative datasets which flow rapidly into PHE and are incorporated into the Cancer Analysis System (CAS) of NCRAS.

This document describes the dataset structure, creation methodology, and data quality caveats (due to the rapid automated creation process without additional data curation) behind this dataset.

These data structures and methodologies are expected to evolve over the course of the public health response to COVID-19. The data is updated monthly and is referred to by the monthly CAS snapshot upon which it is based, e.g. CAS2009 refers to the CAS snapshot from September 2020. This document is considered a 'living document' and strictly applies only to the snapshot of CAS identified in the title.

Methodology

Proxy registration events (Rapid Registrations)

Datasets available to PHE were surveyed for how many months in arrears that they arrive within NCRAS and are loaded in a usable format for analysis. From these datasets a selection of event types were defined similarly to those typically used for cancer pathway analysis pursued by NCRAS.

The data takes the form of a series of significant events that occur to each patient as they proceed through the diagnostic and then therapeutic parts of the cancer pathway. These events include chemotherapy cycles, radiotherapy episodes and major cancer surgery as well as events based on the Cancer Waiting Times (CWT) and Cancer Outcomes and Services Dataset (COSD) datasets. These event types are numbered in the range 1-23 in the dataset.

Some events hypothesised to be indicative of a cancer diagnosis were defined including 'Diagnosis reported in COSD' (event 51) and 'CWT estimated diagnosis date' (event 52). These are numbered in the range 50-57 in the dataset - see Appendix 1 for a full list.

The indicative events for diagnosis were explored as candidate Rapid Registration events. These candidate rapid registration events were judged as matching against a Gold Standard Registration event if it met the following two conditions:

- The difference in diagnosis dates for each event was 90 days or less.
- Both registrations fell into the same broad tumour group (as defined in Appendix 3).

Using these matching criteria False Positive errors and False Negative errors are defined as:

- **False Positive Error (FPE):** A rapid registration event has been created which does not match against a Gold Standard Registration in the comparison period.
- **False Negative Error (FNE):** There exists a Gold Standard Registration event for which no rapid registration event can be matched.

Additional filtering was applied to the candidate events and eventually event 101 was defined to minimise both false positive and false negative errors and is recommended for use by researchers as the best candidate for a rapid cancer registration. Appendix 4 briefly examines some of the alternatives examined in the development of this event definition.

Data structures

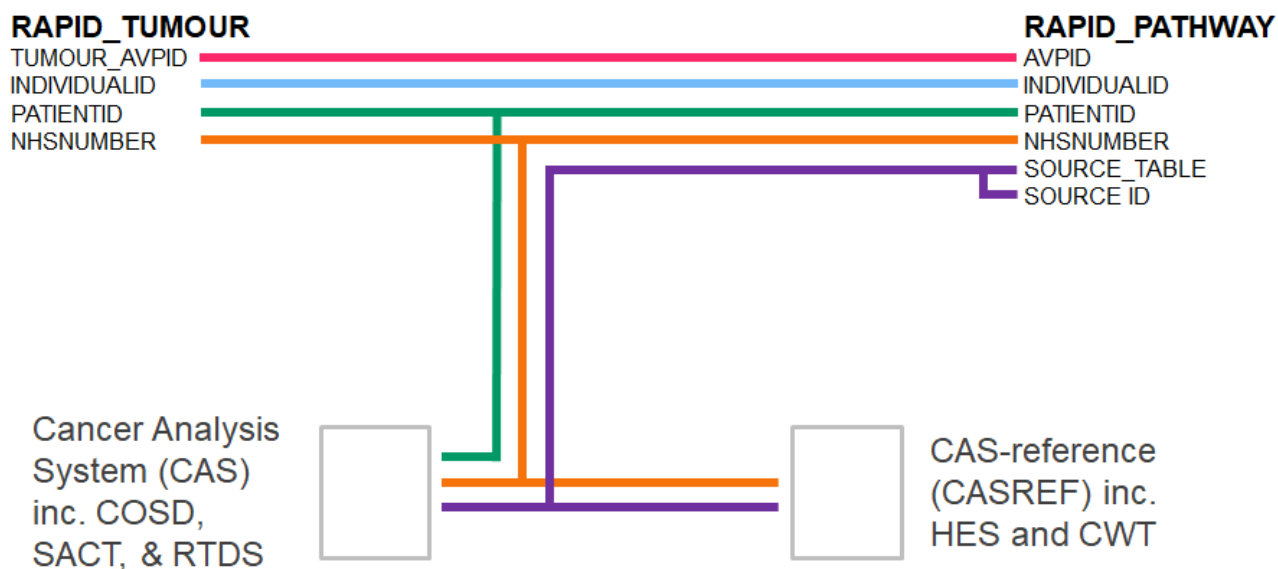
The rapid registration dataset consists of two tables:

AT_RAPID_PATHWAY: This is an event-based dataset with a number of types of event of interest defined based on the rapidly available datasets, see Appendix 1 for event definitions and properties. These are numbered in the range 1-23 for general purpose events, 50-57 for events that are candidates for combining into a rapid registration, and 101 for the final rapid registration event.

AT_RAPID_TUMOUR: This is a tumour level dataset that holds tumour and patient level data for each of the tumours defined by a rapid registration. The structure and contents of this table are presented in Appendix 3.

The rapid registration pathway and tumour table can be linked together as shown in Figure 1, and also to other datasets that are timely enough via NHSnumber.

Figure 1: Linkage diagram for the Rapid Cancer Registration Dataset



Data Quality

How do the number of Rapid Registrations compare with Gold Standard Registrations?

To illustrate the strengths and weaknesses of the Rapid Registrations compared to the gold standard process, registrations for tumours diagnosed during 2018 are compared in Figure 2.

For most tumour groups the counts of Rapid Registrations are significantly lower than those of standard registrations. The COSD system does not attempt to record basal cell carcinoma non-melanoma skin cancers (but they are recorded by hospital pathology systems, and thereby registered), explaining the discrepancy there. There is only one group where this situation is reversed - bone and soft tissue - for which a precise morphology is required to properly record the diagnosis. These cancers are being preferentially coded to bone and soft tissue in COSD (as the COSD standard necessitates simpler site-based coding, and this is the best choice under the circumstances) and re-coded during the gold standard registration process where more sophisticated combination of site and morphological coding is possible.

Figure 2: The number of cancer registrations by registration and tumour type, England, 2018

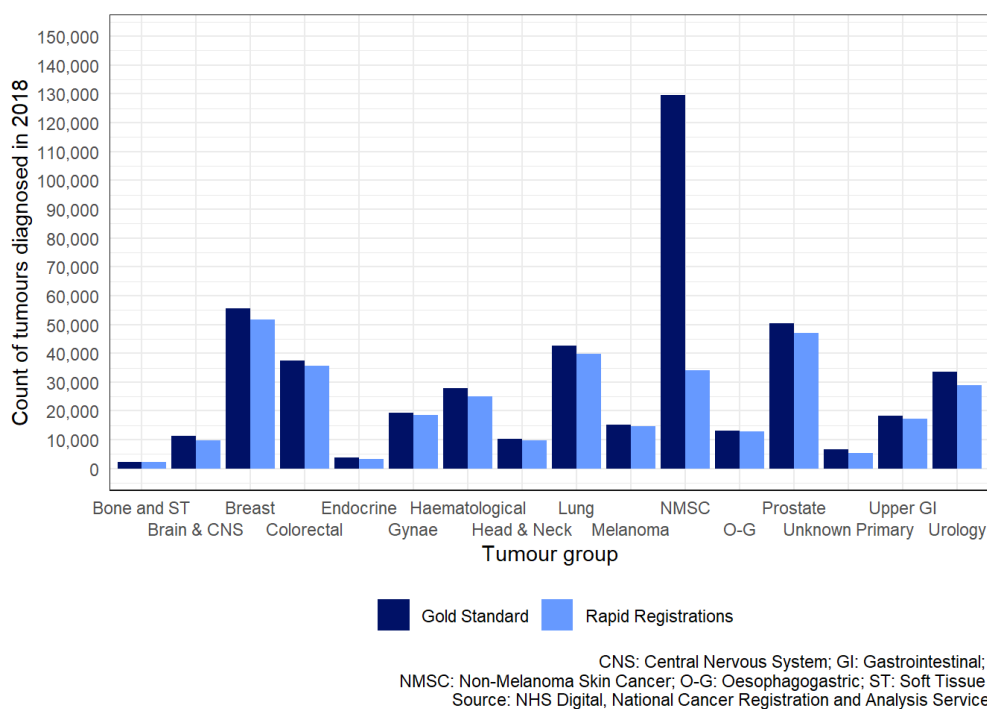
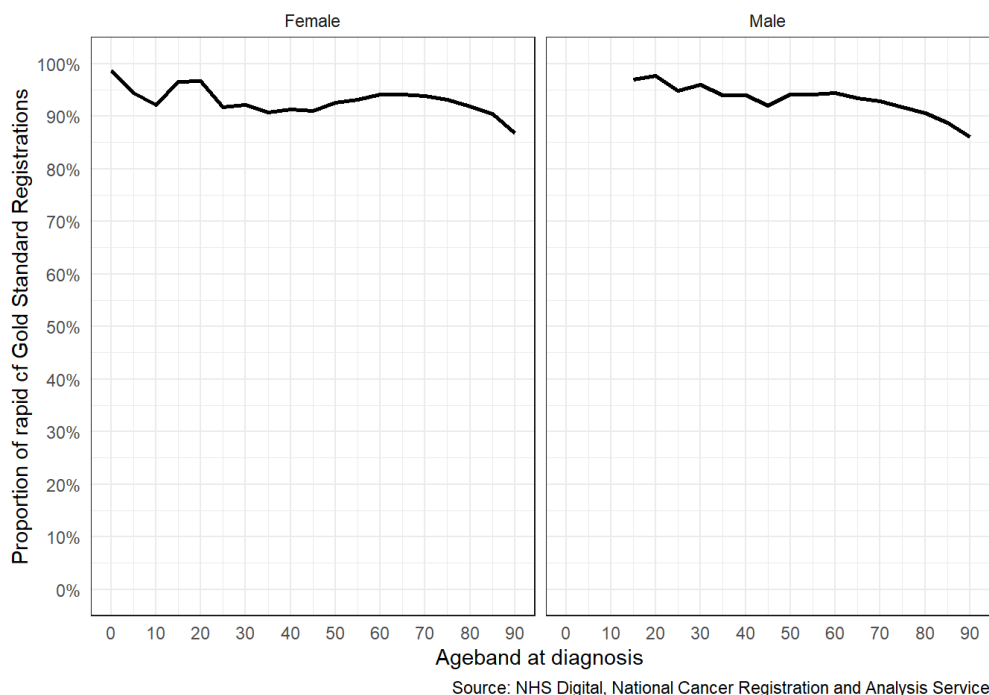


Figure 3 shows the age dependence of the ratio between Gold Standard and Rapid Registrations, Non-Melanoma Skin Cancer is excluded. The proportion of diagnoses is consistently high for both males and females until the age of 70 is reached, where it declines. This is explored further in Figure 5 below.

Figure 3: The proportion of cancer registrations by sex, age and registration type, England, 2018 (all tumour types combined)



Comparing the matching quality of Rapid Registrations

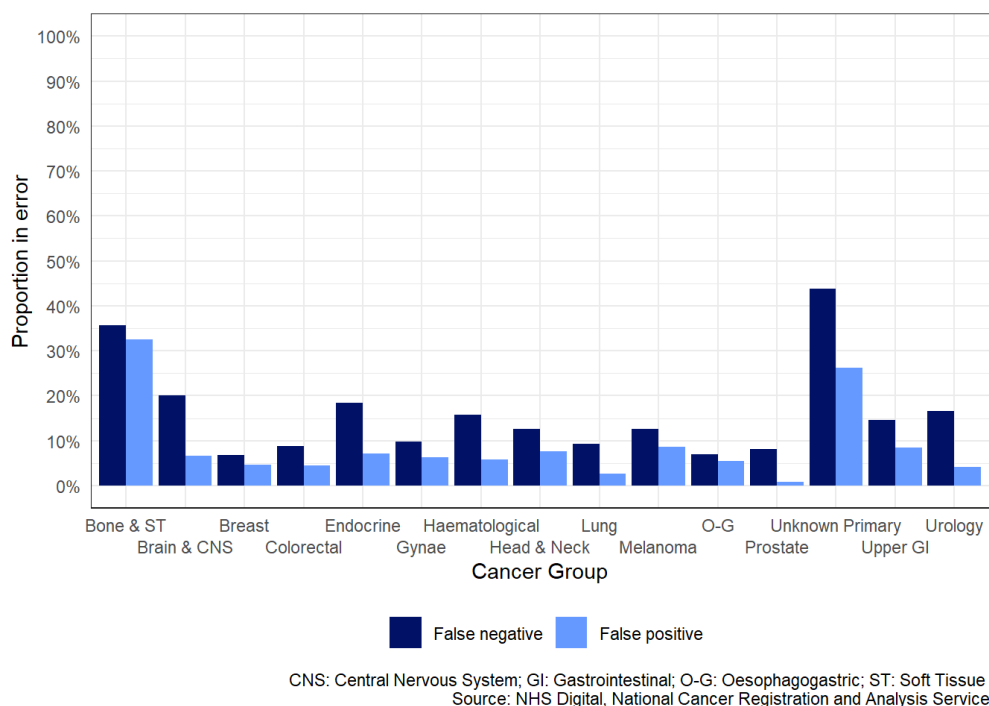
The quality of the Rapid Registrations was judged by comparing them against the gold-standard cancer registrations in the period April 2018 to September 2018. This period was chosen as available gold standard registration data was only finalised to December 2018 and a matching period of 90 days was allowed (restricting comparison to the middle six months of the twelve-month period).

Figure 4 shows the proportions of false positive and false negative events, by broad cancer type (excluding non-melanoma skin cancer), measured in the cas2208 snapshot (the tumour groups are defined in Appendix 3). A more detailed tabulation is available by tumour group and tumour site in Appendix 5.

In most tumour groups, there are more tumours missed by the rapid registrations process (false negatives) than there are falsely identified as tumours (false positives).

For breast and prostate, very few incorrect proxy registrations are made. Breast, colorectal, lung, oesophagogastric (O-G) and prostate cancers are also least likely to be missing from the proxy dataset, whereas for cancers of unknown primary, and bone and soft tissue tumours more than 25% of cancers are missed. Bone and soft tissue tumours are not frequently diagnosed. These tumours often require multiple pathology reports to correctly diagnose a patient and the Rapid Registrations dataset has not attempted to reconcile differences in the reported diagnoses.

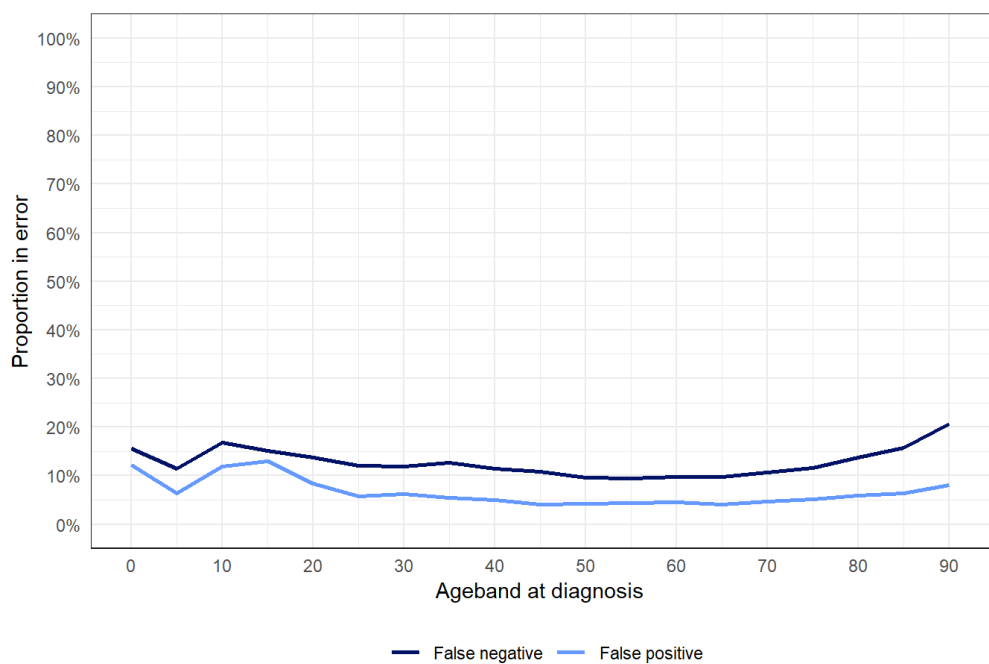
Figure 4: Types of error by tumour group



The proportion of false positive errors is fairly stable across all ages (Figure 5); the proportion of false negative errors slowly declines until age 70 when it increases significantly. The age dependence was investigated and the age-dependence of the basis of diagnosis was found to be at least partially responsible for this - see Appendix 6 for details.

The proportion of false positive cases is less sensitive to the age of the patient.

Figure 5: False negative and false positive errors by age band at diagnosis



Source: NHS Digital, National Cancer Registration and Analysis Service

The charts in Figure 6 (below) examine these patterns by tumour group. Please note that age groups for each tumour group must have a denominator of 25 patients or more or they are suppressed for reasons of statistical power.

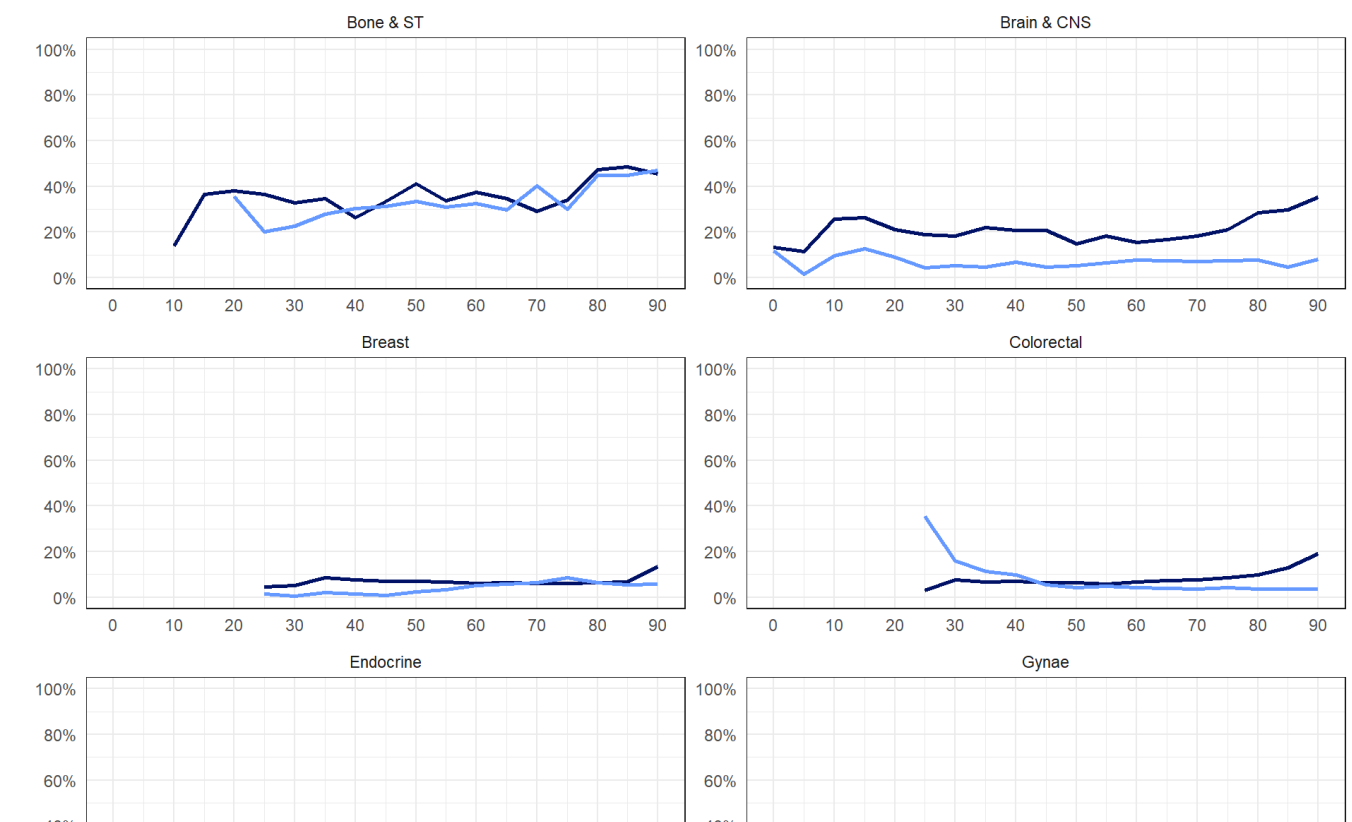
The patterns of false negative and false positive vary significantly by tumour group. Most groups have a higher proportion of false negatives than false positives at each age.

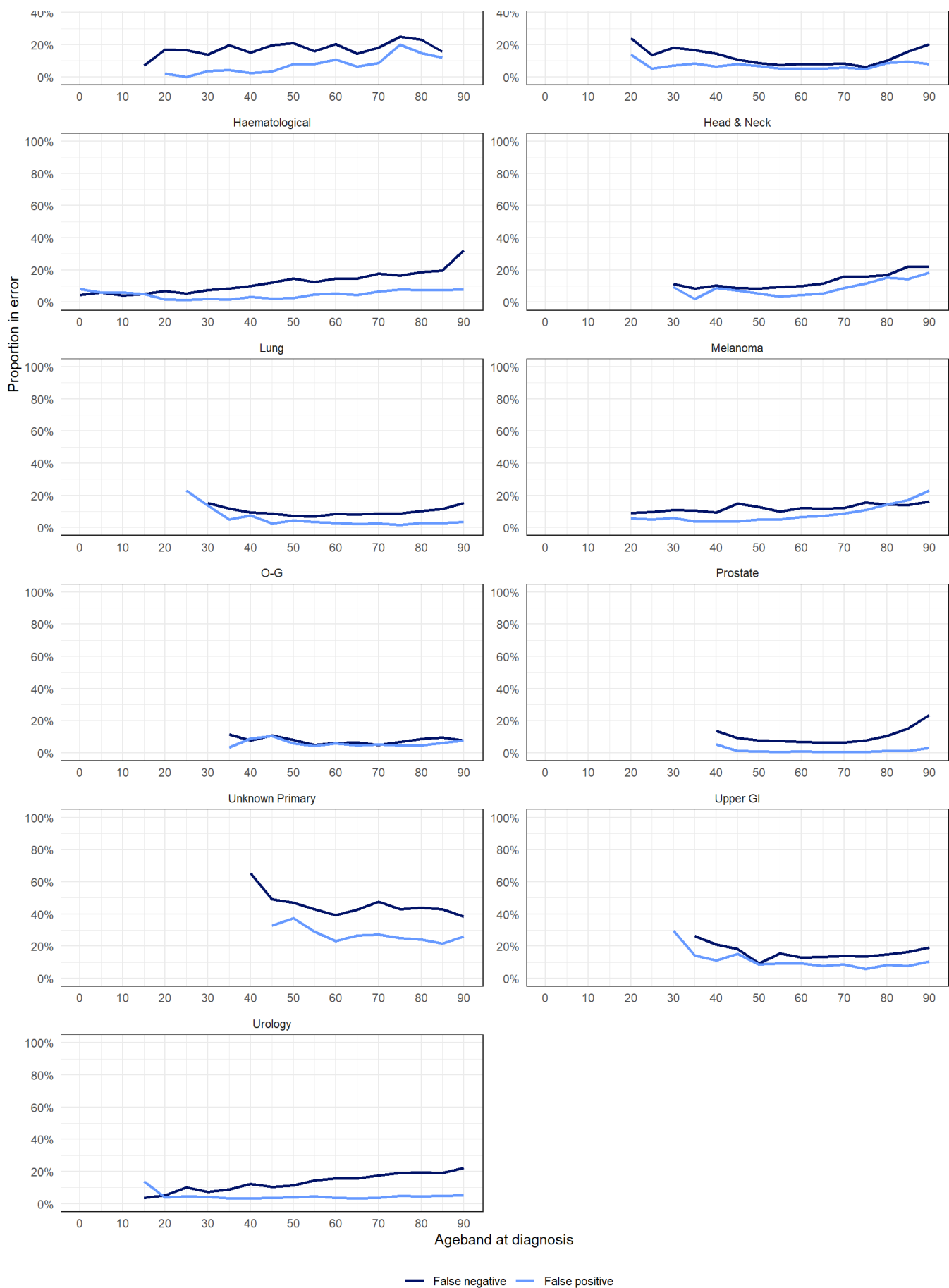
The proportion of false positives does not exhibit a trend by age for most tumour groups; the proportion rises with increasing age in the bone and soft tissue, head and neck groups and melanoma group and conversely falls with increasing age in the colorectal and unknown groups.

The proportion of false negatives rises with increasing age for all tumour groups except bone and soft tissue and endocrine. The most pronounced increases occur in the brain and central nervous system, colorectal, gynaecological, haematological, prostate, upper gastro-intestinal and unknown primary tumour groups.

The levels of both types of error are highest in tumour groups which are less likely to have solid-tissue pathology (haematological) or where survival rates are typically low. Conversely, the levels of error are lowest for tumour groups for which survival rates are typically higher.

Figure 6: False negative and false positive errors by age band at diagnosis and tumour group

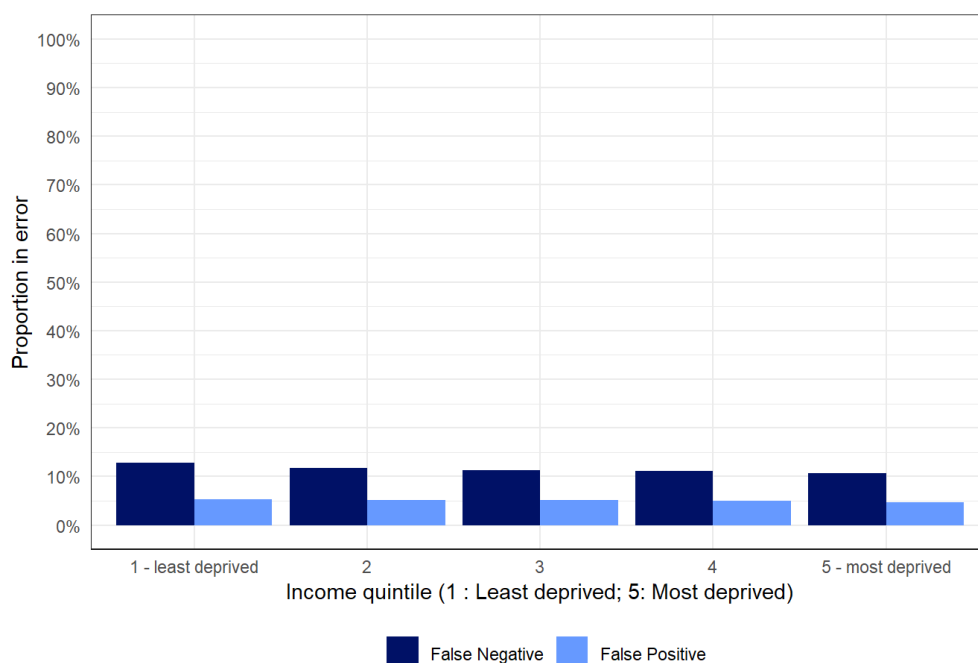




CNS: Central Nervous System; GI: Gastrointestinal; O-G: Oesophagogastric; ST: Soft Tissue
Source: NHS Digital, National Cancer Registration and Analysis Service

The variation of the false positive and false negative errors with Income deprivation quintile is shown in figure 6. While there is an overall trend visible this is likely to be due to confounding due to the variation with tumour type shown above and the known association of the incidence of many cancer types with income deprivation.

Figure 6: False negative and false positive errors by income deprivation quintile

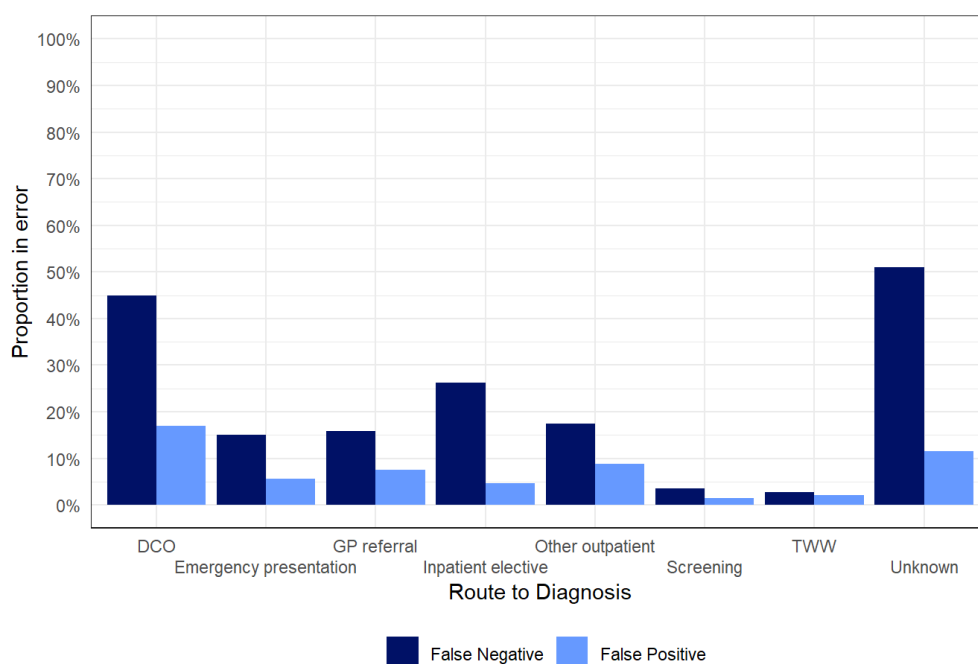


Source: NHS Digital, National Cancer Registration and Analysis Service

Figure 7 shows the variation of false negative and false positive errors with route to diagnosis. For false positives there is moderate variation with the lowest error rate being those cases identified through cancer screening or a two week wait referral. (These tumours are those that are likely to be captured in both the COSD dataset and the screening/Cancer Waiting Times datasets so the lower error rate is understandable.)

Most routes to diagnosis have a substantially higher false negative rate than the overall average. 'Two Week Wait' (TWW) and screening routes have a substantially lower false negative rate (and make up between them 45% of the total cohort).

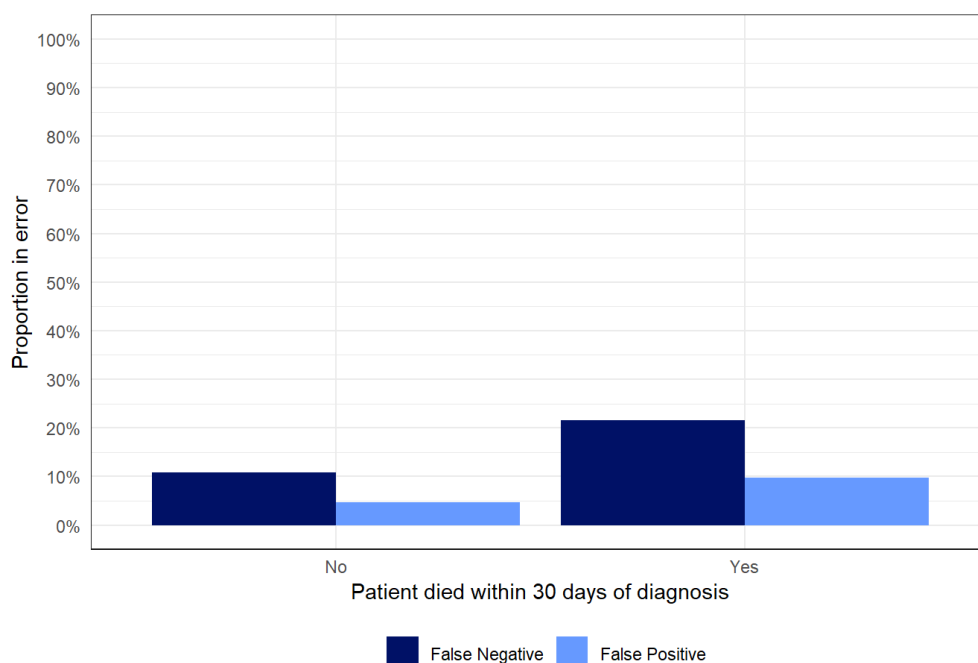
Figure 7: False negative and false positive errors by route to diagnosis



Source: NHS Digital, National Cancer Registration and Analysis Service

Figure 8 below shows the variation of false negative and false positive errors with whether or not the patient died within 30 days of diagnosis. The false negative error rate varies substantially between patients who die in the 30 days post-diagnosis compared to those who did, meaning that patients who die within 30 days are more likely to be missing from the dataset.

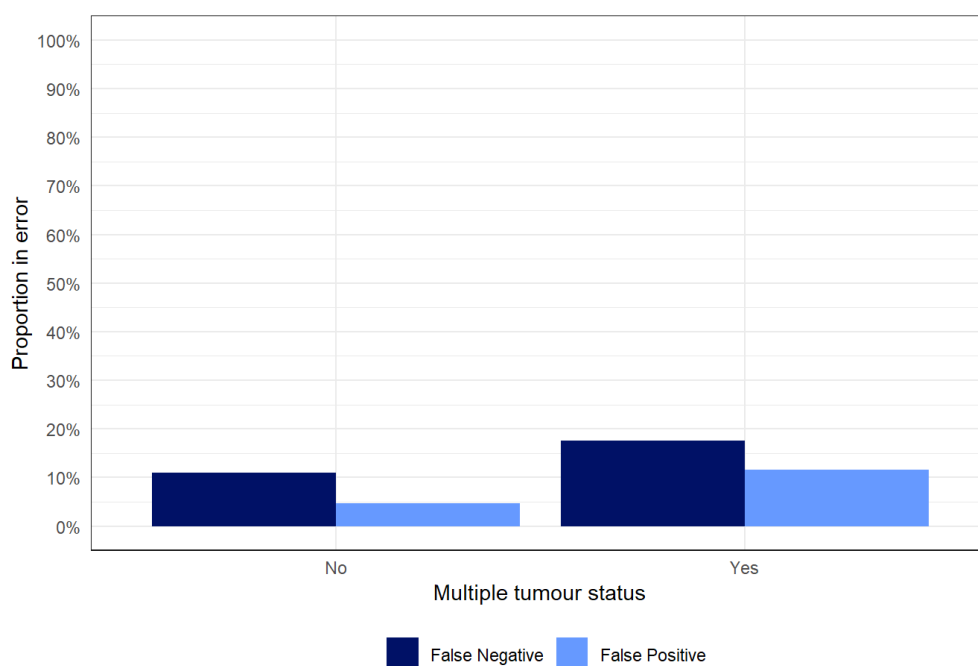
Figure 8: False negative and false positive errors by 30-day mortality



Source: NHS Digital, National Cancer Registration and Analysis Service

Figure 9 below shows the variation of false negative and false positive errors with the multiple tumour status of the patient, i.e. whether or not the patient had been diagnosed with more than one type of tumour in the period January 2018 onward. The false positive error rate varies substantially between patients with multiple tumour types and those that don't, meaning that these patients with multiple tumours are more likely to have incorrect tumour types or diagnosis dates recorded.

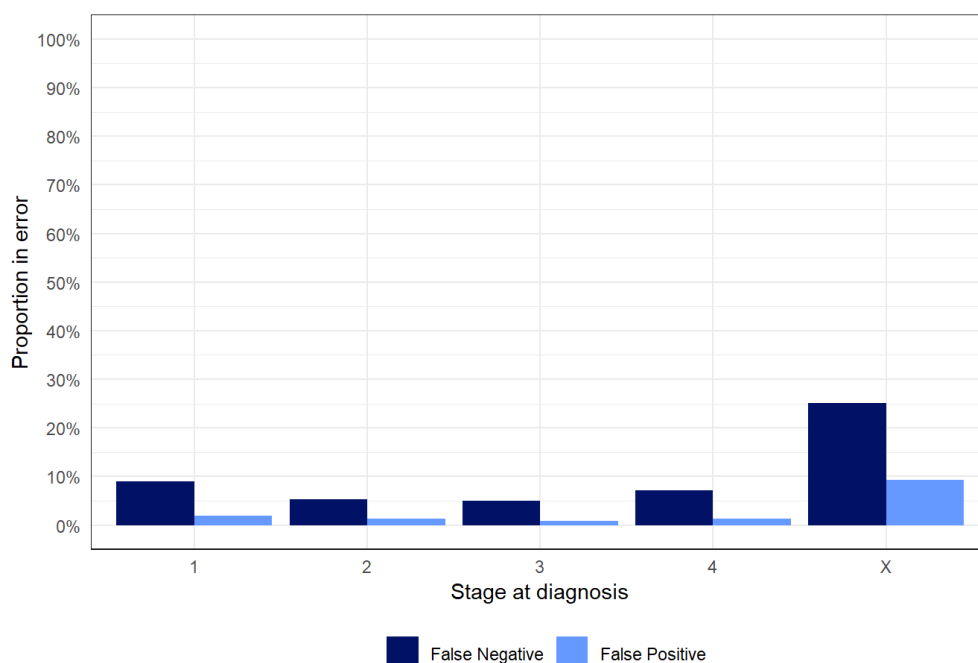
Figure 9: False negative and false positive errors by multiple tumour status



Source: NHS Digital, National Cancer Registration and Analysis Service

Figure 9b below shows the variation of false negative and false positive errors with the stage at diagnosis.

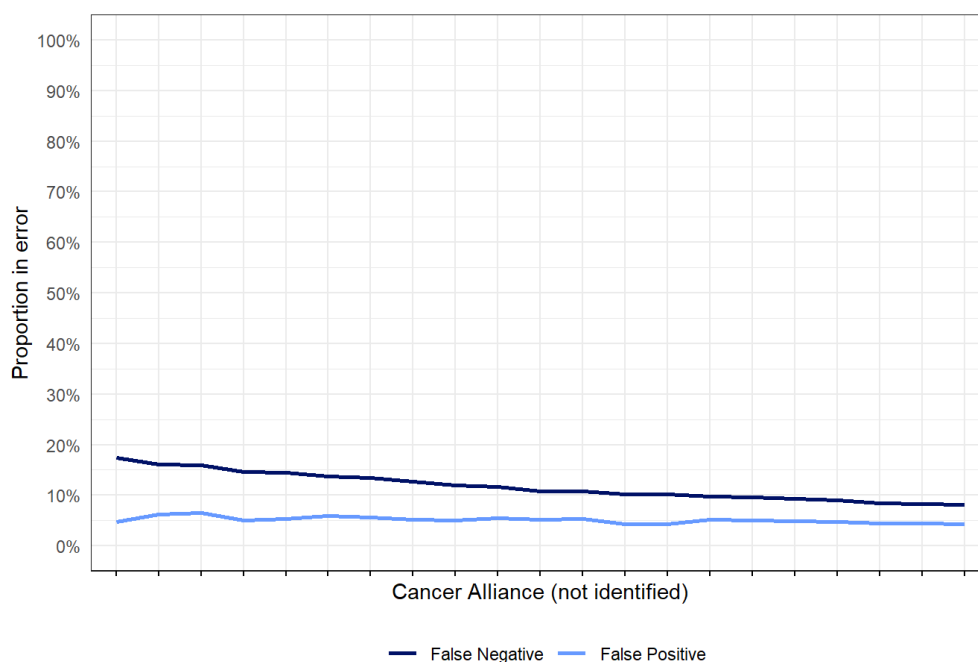
Figure 9b: False negative and false positive errors by stage



Source: NHS Digital, National Cancer Registration and Analysis Service

Figure 10 below shows the variation of false negative and false positive errors with the cancer alliance of residence of the patient at the time of diagnosis. The false negative error rate varies more in absolute terms than the false positive rate and may be driven by trust level variation (see figures 11 and 12 below).

Figure 10: False negative and false positive errors by Cancer Alliance

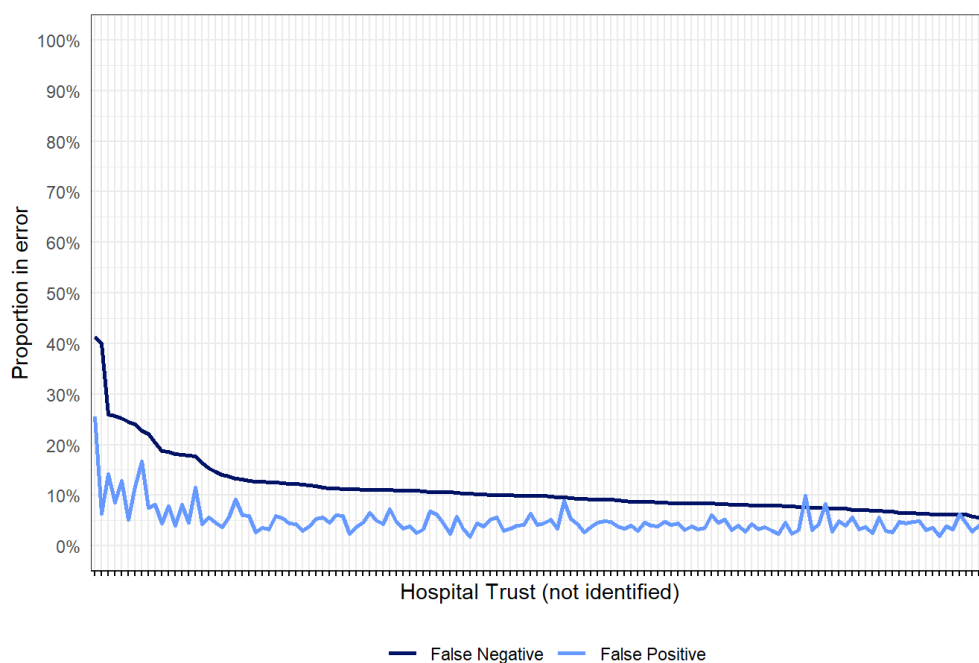


Source: NHS Digital, National Cancer Registration and Analysis Service

Figures 11 and 12 below show the variation of false negative and false positive errors with the trust that diagnosed the tumour. Figure 11 shows the error proportion and figure 12 the numerator (count) of the errors. Trusts shown are limited to NHS secondary care trusts with a denominator of at least 50 patients over the assessment period. Both figures are ordered in descending order of the false negative statistic - but note that the order is not the same in each figure.

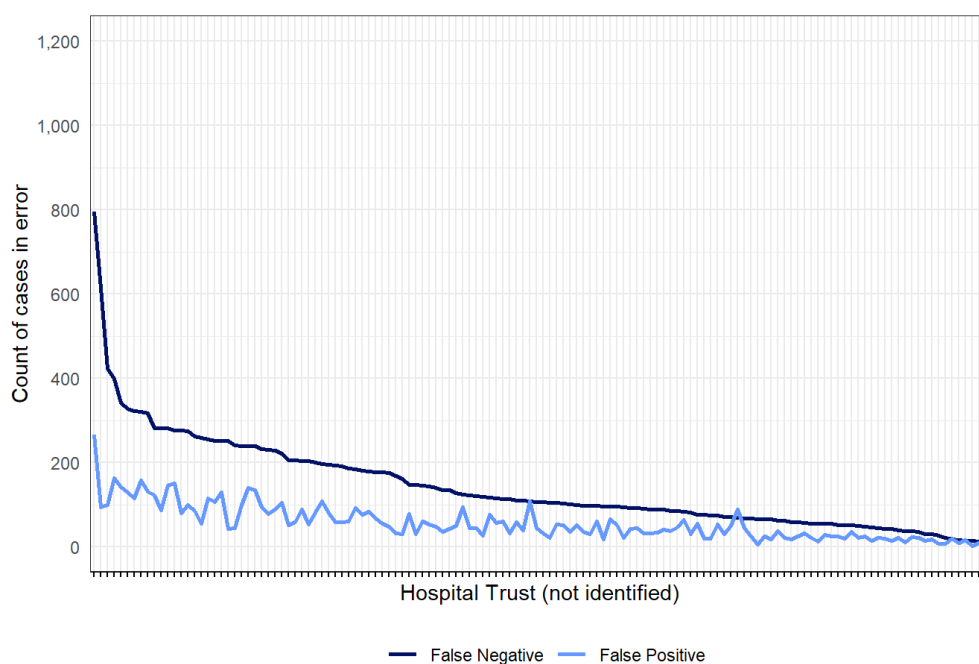
There is substantial variation in both false positive and false negative rates and counts. Some large trusts have several hundred or up to 1000 cases (over the six-month period under assessment).

Figure 11: False negative and false positive errors (proportion) by hospital trust



Source: NHS Digital, National Cancer Registration and Analysis Service

Figure 12: False negative and false positive errors (count) by hospital trust



Source: NHS Digital, National Cancer Registration and Analysis Service

Sensitivity testing of matching criteria

In this section, the sensitivity of the Rapid Registrations dataset is illustrated for different matching criteria.

As expected, the stricter the criteria about the timing of events, more errors (both false negative and false positive) are observed. Not including a match specification on tumour type (the second line of table 1) improves both matching criteria and demonstrates that approximately 40% of false positive tumours have a cancer diagnosis of some sort when the necessity of matching by tumour group is removed.

Table 1: Proportions of false positive and negative errors under alternative matching criteria

Tumour matching	Match within N days	False Negative %	False Positive %
Broader	90	11.6%	6.0%
Broader	60	13.3%	7.7%
Broader	30	18.8%	13.4%
Broader	14	29.9%	25.1%

Tumour matching	Match within N days	False Negative %	False Positive %
Broader	7	46.4%	42.9%
Broader	0	82.0%	80.7%
Narrow	90	19.5%	13.9%
None	90	10.1%	4.6%

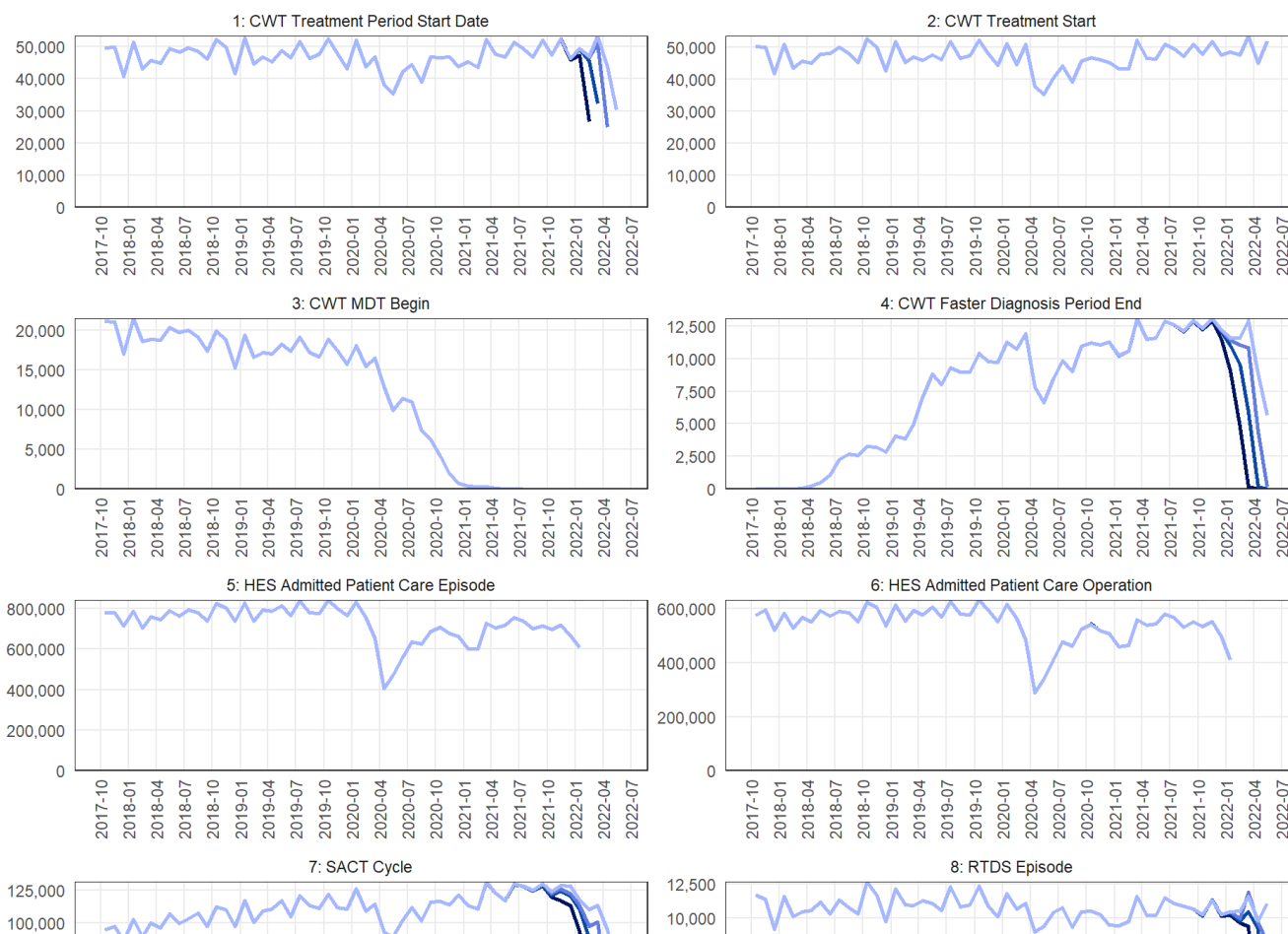
Counts of events over time

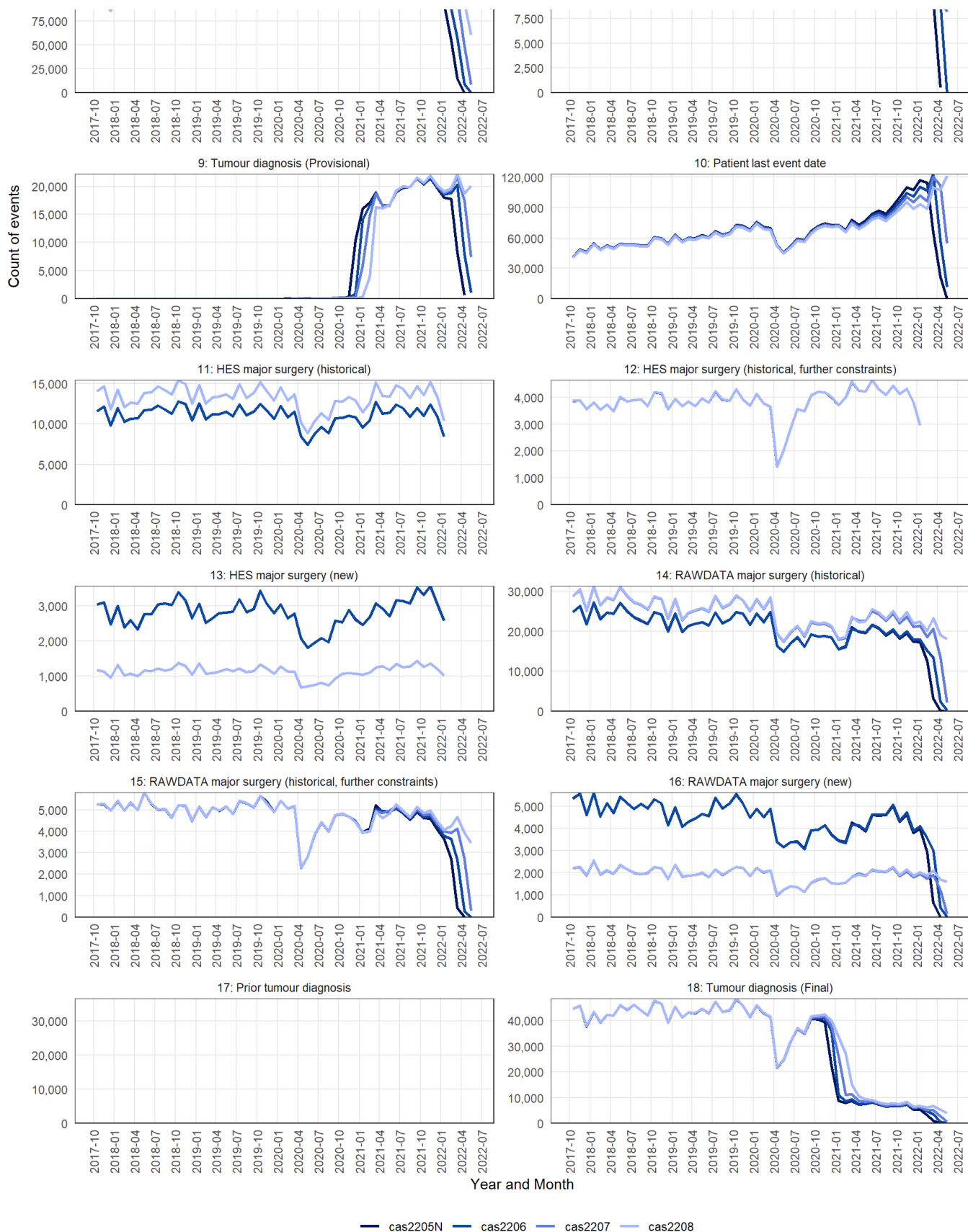
This section examines the population of events by chronological time and when they appear in successive analytical snapshots in the CAS. Figure 13 shows that most data items in the Rapid Registrations dataset are stable with respect to the snapshot month.

Specific comments about the events shown below are:

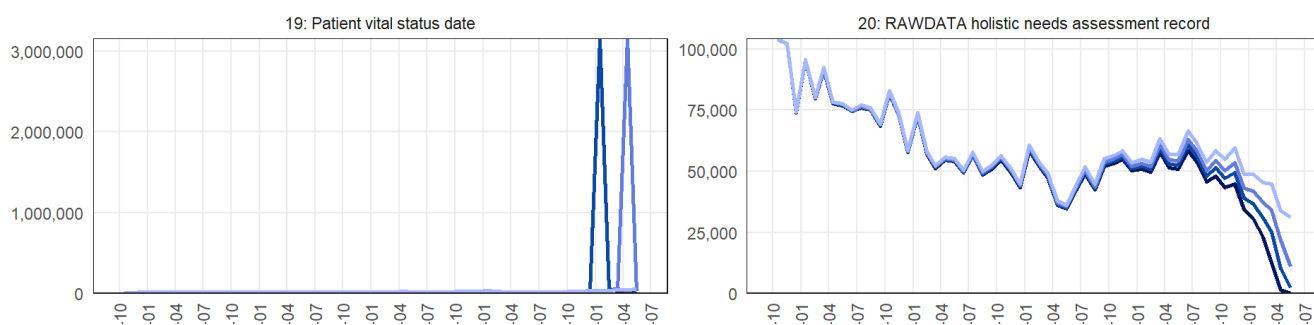
- Cancer Waiting Times data (events 1-4) are received based on the treatment start date, this explains the fact that for event 2 all lines lie exactly on top of each other. Other CWT events accumulate over successive snapshots where these events precede the first treatment start event.
- An issue with HES data resulting in lower than expected completeness port 2020-04-01 was resolved in cas2102, showing as increased event counts in events 5, 6, 11, 12, 13 and 23.
- The definition of event 17 only includes tumour diagnoses prior to 2018, lack of data in the chart below is expected.
- Definitions of staging events may change between snapshots, this might explain higher or lower counts in one snapshot compared to others.
- The vital status shown in the event 19 is typically only assessed each January or the completion of registering each diagnosis year, explaining the large peaks in the graph.
- The raw data used to populate events 21, 54, and 56 is subject to ongoing deduplication, this explains lower counts in earlier time periods for later snapshots.
- Between snapshots there is generally an increase in the Event 101-103 (Inferred diagnoses) counts, particularly for recent months as additional COSD data is submitted. However, for some earlier months there is a small decrease in these event counts. This is because the algorithm to define Events 101-103 excludes potential diagnoses where the patient has a confirmed diagnosis for the same tumour group which was more than 90 days before the potential diagnosis, to avoid double-counting the same diagnosis. These exclusions can change between snapshots due to the processing of gold standard cancer registration data, which leads to an increase in confirmed previous diagnoses. However the magnitude of this effect has been measured to be <1% of all cases in any given month.

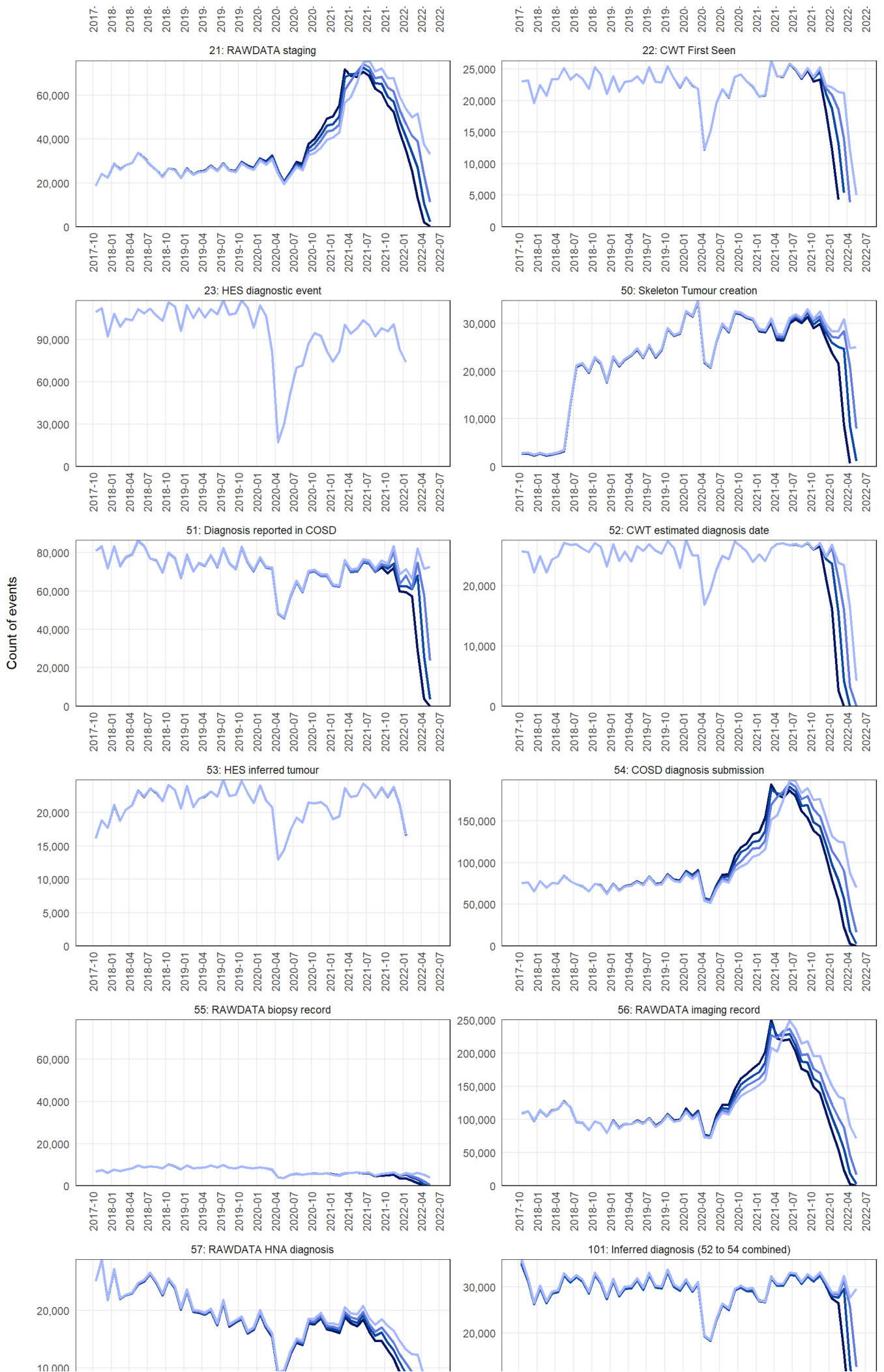
Figure 13: Population of data items to CAS snapshot

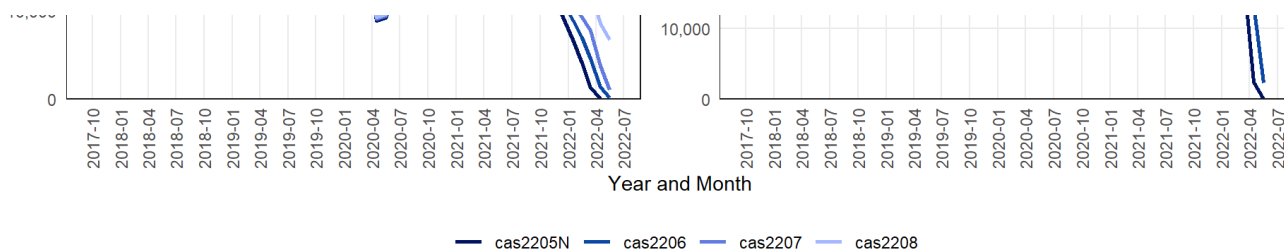




Source: NHS Digital, National Cancer Registration and Analysis Service







Source: NHS Digital, National Cancer Registration and Analysis Service

Estimated completeness of Rapid Registrations and secondary datasets

Detailed linked rapid cancer registration, CWT, SACT and RTDS data is available at approximately a four-month lag from real time. Linked HES and raw COSD data is available at approximately 4-5 months behind real time.

Table 2 below shows data usability and completeness for Rapid Registrations and the constituent datasets. The "latest usable" column shows the 'hard limit' on data that is considered fit for analytical purposes (90% completeness), even in months prior to this though data is not necessarily considered complete and the completeness is displayed below. This should be taken into account in any use of the rapid registration data and the secondary datasets.

For the Rapid Tumour data completeness is expressed as the proportion of CCG of residence which show a cancer incidence within the normally expected range (see Table 3 below). For other datasets except CWT completeness is computed as a percentage of the number of data providers who have supplied data over those who are expected to do so.

Data completeness within the Cancer Waiting Times dataset varies at patient level with event type. Figures for the Treatment Start Date and Treatment Period Start Date are given below. Completeness of other CWT events can be estimated by inspecting Figure 13 (events 1-4).

Table 2: Rapid registration and dataset usability/completeness in cas2208

Data source	Latest usable	November 2021	December 2021	January 2022	February 2022	March 2022	April 2022	May 2022
Rapid Tumours (COSD)	May 2022	Complete	Complete	95%	Complete	Complete	96%	93%
HES	December 2021	Complete	Complete	•	•	•	•	•
SACT	February 2022	95%	97%	95%	91%	•	•	•
RTDS	May 2022	98%	96%	98%	98%	98%	90%	96%
CWT (TSD)	May 2022	Complete	Complete	Complete	Complete	Complete	Complete	Complete
CWT (TPSD)	April 2022	Complete	Complete	Complete	Complete	Complete	98%	•

Note:

COSD = Cancer Outcomes and Services Dataset

TSD = Treatment Start Date

TPSD = Treatment Period Start Date

Table 3: Number of outlier CCGs in COSD dataset in cas2208

The table below shows the number of CCGs (using the April 2020 boundaries) which have 3-sigma outlier counts per month (either high or low) compared to the expectation of the fraction of the total number of new cancer registrations in England. This can be used to judge to what extent there is large scale missing data in COSD (and therefore in the Rapid Registrations in any particular month.)

Year and month	Outlier: High	Outlier: Low	In expected range	Total received
2020-01	0	1	134	135
2020-02	1	0	134	135
2020-03	0	1	134	135
2020-04	4	7	124	135
2020-05	4	3	128	135
2020-06	1	3	131	135
2020-07	1	0	134	135

Year and month	Outlier: High	Outlier: Low	In expected range	Total received
2020-08	0	5	130	135
2020-09	1	0	134	135
2020-10	0	3	132	135
2020-11	0	1	134	135
2020-12	1	1	133	135
2021-01	1	0	134	135
2021-02	1	2	132	135
2021-03	1	2	132	135
2021-04	2	0	133	135
2021-05	1	1	133	135
2021-06	0	1	134	135
2021-07	1	1	133	135
2021-08	0	1	134	135
2021-09	2	3	130	135
2021-10	1	2	132	135
2021-11	0	1	134	135
2021-12	0	1	134	135
2022-01	3	4	128	135
2022-02	0	3	132	135
2022-03	0	3	132	135
2022-04	0	6	129	135
2022-05	2	7	126	135

Staging data in the Rapid Registrations dataset

TNM stage group 1-4

The size and extent of a cancer is commonly described using the 'TNM' system (<https://www.uicc.org/resources/tnm>) for "Tumour", "Node", and "Metastases". This is often abbreviated to a number between 1 (typically a localised tumour with limited spread) to 4 (typically a tumour that has invaded or spread to distant organs). The stage at diagnosis is very strongly associated with patient outcomes.

In the current version of the Rapid Registrations dataset partial staging data is provided for a number of different cancer sites (ICD-10 codes can be found in the labels for tables 5a-k). This has been benchmarked against the gold standard cancer registry data for cas2208.

Table 4 shows the count and proportion of cases by TNM stage group for both the Rapid Registrations and the Gold Standard Registrations, for calendar year 2018. For example 32% of breast cancers are TNM stage group 1 in the Rapid Registrations, but 38% in the Gold Standard Registrations. Compared to the Gold Standard Registrations in 2018, the Rapid Registrations under report breast cancers diagnosed at stages 1 or 2; colorectal cancers diagnosed at stage 4 are under reported and prostate cancers have under reported stages 1 and 4. In all three tumour groups, there are more tumours allocated to the unknown or unstageable category. Lung cancers in the RCRD most accurately match the Gold Standard Registrations and exhibits a broadly similar stage profile from both measures.

Table 4: Summary proportions of stage at diagnosis for the Rapid Registrations and Gold Standard Registrations

Broad Cancer Group	Stage Group	Count (Rapid)	Percentage (Rapid)	Count (Gold Standard)	Percentage (Gold Standard)
Bladder	1	2319	24.2%	2868	29.9%
Bladder	2	1795	18.7%	1880	19.6%
Bladder	3	557	5.8%	883	9.2%

Broad Cancer Group	Stage Group	Count (Rapid)	Percentage (Rapid)	Count (Gold Standard)	Percentage (Gold Standard)
Bladder	4	257	2.7%	659	6.9%
Bladder	U	4668	48.6%	3306	34.5%
Breast	1	13882	31.7%	16388	37.4%
Breast	2	13153	30.0%	16640	38.0%
Breast	3	3210	7.3%	3666	8.4%
Breast	4	1167	2.7%	1958	4.5%
Breast	U	12387	28.3%	5147	11.8%
Colorectum	1	4921	15.0%	5509	16.8%
Colorectum	2	7033	21.4%	7728	23.5%
Colorectum	3	8235	25.1%	9307	28.3%
Colorectum	4	5109	15.6%	7476	22.8%
Colorectum	U	7537	23.0%	2815	8.6%
Kidney	1	2377	28.8%	3346	40.5%
Kidney	2	446	5.4%	558	6.8%
Kidney	3	1367	16.6%	1659	20.1%
Kidney	4	686	8.3%	1580	19.1%
Kidney	U	3376	40.9%	1109	13.4%
Lung	1	6170	17.1%	6652	18.4%
Lung	2	2593	7.2%	2694	7.5%
Lung	3	7299	20.2%	7614	21.1%
Lung	4	14918	41.3%	17209	47.7%
Lung	U	5121	14.2%	1932	5.4%
Lymphoma	1	838	7.3%	1616	14.0%
Lymphoma	2	937	8.1%	1589	13.8%
Lymphoma	3	1184	10.3%	1975	17.1%
Lymphoma	4	2500	21.7%	4744	41.2%
Lymphoma	U	6059	52.6%	1594	13.8%
Melanoma	1	6330	48.0%	8265	62.7%
Melanoma	2	2397	18.2%	2657	20.1%
Melanoma	3	442	3.4%	1033	7.8%
Melanoma	4	197	1.5%	350	2.7%
Melanoma	U	3822	29.0%	883	6.7%
Oesophagus	1	290	3.5%	449	5.4%
Oesophagus	2	1505	18.0%	971	11.6%
Oesophagus	3	1785	21.4%	2156	25.8%
Oesophagus	4	2554	30.6%	3253	39.0%

Broad Cancer Group	Stage Group	Count (Rapid)	Percentage (Rapid)	Count (Gold Standard)	Percentage (Gold Standard)
Oesophagus	U	2215	26.5%	1520	18.2%
Ovary	1	1140	22.4%	1473	28.9%
Ovary	2	235	4.6%	278	5.5%
Ovary	3	1176	23.1%	1630	32.0%
Ovary	4	691	13.6%	1050	20.6%
Ovary	U	1849	36.3%	660	13.0%
Pancreas	1	353	4.4%	668	8.3%
Pancreas	2	616	7.7%	804	10.0%
Pancreas	3	739	9.2%	1040	13.0%
Pancreas	4	2025	25.3%	4124	51.5%
Pancreas	U	4282	53.4%	1379	17.2%
Prostate	1	11625	25.1%	16278	35.1%
Prostate	2	5518	11.9%	6568	14.2%
Prostate	3	10376	22.4%	11682	25.2%
Prostate	4	5626	12.1%	8103	17.5%
Prostate	U	13243	28.5%	3757	8.1%
Stomach	1	317	8.3%	334	8.7%
Stomach	2	358	9.3%	453	11.8%
Stomach	3	609	15.9%	679	17.7%
Stomach	4	1100	28.7%	1620	42.2%
Stomach	U	1455	37.9%	753	19.6%
Uterus	1	4639	58.1%	5408	67.8%
Uterus	2	510	6.4%	542	6.8%
Uterus	3	731	9.2%	823	10.3%
Uterus	4	501	6.3%	556	7.0%
Uterus	U	1600	20.0%	652	8.2%

In Tables 5a-m below, the distribution of the stage allocations between the Rapid Registrations and the Gold Standard Registrations are examined. The figures indicate the proportion of agreement at the 1-digit TNM stage group level, where the stage is known in the Rapid Registrations dataset. Stages 1-4 in the Rapid Registrations dataset agree with the gold standard stage variable for a high proportion.

For example, when examining the subset of Rapid Registrations breast tumours that are identified as TNM stage 1 (32%), approximately 89% of these are found to be TNM stage group 1 in the gold standard registration data, with another 11% distributed across TNM stages 2-4 and the unknown or unstageable groups.

For many but not all (e.g., late stage breast cancer), roughly 85% or more of staged cases in the Rapid Registrations table have the same stage grouping as the equivalent tumour in the standard registration data - this can be seen in the table below by inspecting the figures where the stage metrics for the Rapid Registrations and Gold Standard Registrations are the same.

Where the stage is labelled as unknown or unstageable in the rapid pathway dataset it is known for at least 70% of those cases in the gold standard data.

Tables 5a-m: Stage comparison between Rapid Registrations and Gold Standard Registrations by cancer site

a. bladder (ICD-10 C67)

Stage Group (Rapid)

Stage Group (Gold Standard)	1	2	Stage Group (Rapid)	3	4	Unknown
Stage Group (Gold Standard)	1	2	3	4		Unknown
1	84.9%	4.1%	7.7%	5.4%		16.5%
2	3.9%	71.8%	15.6%	5.8%		8.5%
3	2.6%	10.9%	65.2%	4.7%		5.4%
4	1.3%	5.0%	5.6%	79.4%		6.6%
U	7.3%	8.2%	5.9%	4.7%		63.0%

b. breast (ICD-10 C50)

	Stage Group (Rapid)				
Stage Group (Gold Standard)	1	2	3	4	Unknown
1	89.1%	4.8%	1.5%	3.3%	26.6%
2	6.4%	88.7%	11.0%	14.1%	28.8%
3	0.5%	2.6%	80.5%	5.5%	4.8%
4	0.2%	0.9%	2.9%	72.4%	7.1%
U	3.7%	3.0%	4.1%	4.7%	32.7%

c. colorectum (ICD-10 C18-C20)

	Stage Group (Rapid)				
Stage Group (Gold Standard)	1	2	3	4	Unknown
1	84.9%	2.1%	1.8%	0.6%	13.3%
2	5.7%	85.6%	5.5%	1.2%	12.0%
3	6.6%	7.5%	85.1%	4.4%	16.2%
4	0.9%	2.8%	5.8%	92.8%	26.8%
U	1.9%	2.0%	1.7%	1.0%	31.7%

d. kidney (ICD-10 C64)

	Stage Group (Rapid)				
Stage Group (Gold Standard)	1	2	3	4	Unknown
1	91.3%	6.5%	3.1%	1.7%	32.3%
2	0.5%	78.5%	1.0%	0.7%	5.2%
3	1.7%	6.7%	85.7%	3.9%	11.6%
4	0.5%	3.4%	5.9%	92.4%	24.9%
U	6.0%	4.9%	4.2%	1.2%	26.0%

e. lung (ICD-10 C33-C34)

Stage Group (Rapid)

Stage Group (Gold Standard)	1	2	Stage Group (Rapid)	3	4	Unknown
Stage Group (Gold Standard)	1	2	3	4	Unknown	
1	93.8%	6.6%	1.1%	0.4%		10.7%
2	2.6%	84.5%	1.7%	0.3%		3.2%
3	1.7%	4.9%	90.8%	1.3%		11.1%
4	1.2%	3.0%	5.5%	97.5%		41.1%
U	0.7%	1.0%	0.9%	0.4%		33.9%

f. melanoma (ICD-10 C43)

Stage Group (Rapid)						
Stage Group (Gold Standard)	1	2	3	4	Unknown	
1	94.4%	1.6%	5.7%	9.1%		57.8%
2	2.0%	79.3%	9.0%	16.8%		14.5%
3	2.0%	11.7%	78.3%	14.7%		6.6%
4	0.2%	1.6%	2.5%	47.7%		5.2%
U	1.5%	5.8%	4.5%	11.7%		15.9%

g. oesophagus (ICD-10 C15)

Stage Group (Rapid)						
Stage Group (Gold Standard)	1	2	3	4	Unknown	
1	81.0%	5.0%	0.5%	0.2%		5.6%
2	7.9%	49.6%	3.5%	1.0%		5.2%
3	2.1%	35.0%	68.6%	6.3%		10.7%
4	1.0%	5.3%	21.8%	83.5%		29.3%
U	7.9%	5.0%	5.6%	9.0%		49.2%

h. ovary (ICD-10 C56-C57)

Stage Group (Rapid)						
Stage Group (Gold Standard)	1	2	3	4	Unknown	
1	97.4%	7.2%	0.9%	0.3%		18.0%
2	0.4%	88.1%	0.4%	NA		3.3%
3	0.8%	2.6%	91.7%	11.0%		24.9%
4	0.3%	0.4%	4.4%	84.5%		22.2%
U	1.1%	1.7%	2.6%	4.2%		31.6%

i. prostate (ICD-10 C61)

Stage Group (Rapid)

Stage Group (Gold Standard)	1	2	Stage Group (Rapid)	3	4	Unknown
Stage Group (Gold Standard)	1	2	3	4	Unknown	
1	86.4%	9.4%	4.1%	1.2%		39.5%
2	6.7%	83.3%	2.5%	0.9%		6.7%
3	4.3%	4.2%	86.8%	2.7%		13.6%
4	0.8%	0.8%	4.0%	93.3%		17.4%
U	1.9%	2.4%	2.6%	2.0%		22.8%

j. stomach (ICD-10 C16)

Stage Group (Rapid)						
Stage Group (Gold Standard)	1	2	3	4	Unknown	
1	67.5%	4.7%	0.7%	0.1%		6.7%
2	19.2%	66.5%	10.3%	0.8%		5.6%
3	6.0%	18.2%	69.6%	3.1%		9.4%
4	1.9%	6.4%	15.4%	94.0%		31.8%
U	5.4%	4.2%	3.9%	2.0%		46.4%

k. uterus (ICD-10 C54-C55)

Stage Group (Rapid)						
Stage Group (Gold Standard)	1	2	3	4	Unknown	
1	97.6%	11.0%	5.7%	7.4%		46.6%
2	0.6%	83.7%	1.2%	2.2%		4.2%
3	0.5%	2.2%	87.8%	6.6%		7.1%
4	0.2%	1.6%	2.3%	77.2%		8.4%
U	1.1%	1.6%	2.9%	6.6%		33.7%

l. pancreas (ICD-10 C25)

Stage Group (Rapid)						
Stage Group (Gold Standard)	1	2	3	4	Unknown	
1	73.9%	3.6%	0.9%	0.3%		8.7%
2	15.3%	75.3%	2.4%	0.5%		6.0%
3	4.5%	11.9%	89.3%	0.6%		6.5%
4	3.4%	6.2%	6.1%	97.7%		47.9%
U	2.8%	3.1%	1.2%	0.8%		30.9%

m. lymphoma (ICD-10 C81-86)

Stage Group (Rapid)						
Stage Group (Gold Standard)	1	2	3	4	Unknown	

Stage Group (Gold Standard)	Stage Group (Rapid)				
	1	2	3	4	Unknown
1	90.2%	1.3%	0.4%	0.5%	13.7%
2	1.0%	93.3%	1.3%	0.5%	11.2%
3	0.5%	1.3%	90.4%	1.5%	14.0%
4	6.4%	2.6%	7.1%	95.8%	36.1%
U	1.9%	1.6%	0.8%	1.7%	24.9%

"Early" vs "Late" stage

Below in table 6 we repeat the above tabulations but now grouping Rapid and Gold Standard cancers into "Early" (TNM stage group 1 & 2) or "Late" (TNM stage group 3 & 4) categories. We see that 62% of breast cancers are identified as "Early" stage in the Rapid Registrations dataset compared to 76% in the Gold Standard Registration data due to the higher proportion of "Unknown" stage tumours (28% vs 10% respectively).

As with the more detailed stage data, there is a high degree of concordance between the gold standard and rapid registration stage fields if a known stage can be identified.

Table 6: Summary proportions of "Early" vs "Late" stage for Rapid Registrations and Gold Standard Registrations

Broad Cancer Group	Stage Group	Count (Rapid)	Percentage (Rapid)	Count (Gold Standard)	Percentage (Gold Standard)
Bladder	Early	4114	42.9%	4748	49.5%
Bladder	Late	814	8.5%	1542	16.1%
Bladder	Unknown	4668	48.6%	3306	34.5%
Breast	Early	27035	61.7%	33028	75.4%
Breast	Late	4377	10.0%	5624	12.8%
Breast	Unknown	12387	28.3%	5147	11.8%
Colorectum	Early	11954	36.4%	13237	40.3%
Colorectum	Late	13344	40.6%	16783	51.1%
Colorectum	Unknown	7537	23.0%	2815	8.6%
Kidney	Early	2823	34.2%	3904	47.3%
Kidney	Late	2053	24.9%	3239	39.3%
Kidney	Unknown	3376	40.9%	1109	13.4%
Lung	Early	8763	24.3%	9346	25.9%
Lung	Late	22217	61.5%	24823	68.8%
Lung	Unknown	5121	14.2%	1932	5.4%
Lymphoma	Early	1775	15.4%	3205	27.8%
Lymphoma	Late	3684	32.0%	6719	58.3%
Lymphoma	Unknown	6059	52.6%	1594	13.8%
Melanoma	Early	8727	66.2%	10922	82.8%
Melanoma	Late	639	4.8%	1383	10.5%
Melanoma	Unknown	3822	29.0%	883	6.7%
Oesophagus	Early	1795	21.5%	1420	17.0%
Oesophagus	Late	4339	52.0%	5409	64.8%
Oesophagus	Unknown	2215	26.5%	1520	18.2%

Broad Cancer Group	Stage Group	Count (Rapid)	Percentage (Rapid)	Count (Gold Standard)	Percentage (Gold Standard)
Ovary	Early	1375	27.0%	1751	34.4%
Ovary	Late	1867	36.7%	2680	52.6%
Ovary	Unknown	1849	36.3%	660	13.0%
Pancreas	Early	969	12.1%	1472	18.4%
Pancreas	Late	2764	34.5%	5164	64.4%
Pancreas	Unknown	4282	53.4%	1379	17.2%
Prostate	Early	17143	37.0%	22846	49.2%
Prostate	Late	16002	34.5%	19785	42.7%
Prostate	Unknown	13243	28.5%	3757	8.1%
Stomach	Early	675	17.6%	787	20.5%
Stomach	Late	1709	44.5%	2299	59.9%
Stomach	Unknown	1455	37.9%	753	19.6%
Uterus	Early	5149	64.5%	5950	74.6%
Uterus	Late	1232	15.4%	1379	17.3%
Uterus	Unknown	1600	20.0%	652	8.2%

In Table 7a-m below the distribution of the stage allocation between the Rapid Registrations and the Gold Standard Registrations are examined, aggregated into Early and Late stage.

Tables 7a-m: "Early" vs "late" stage comparison between Rapid Registrations and Gold Standard Registrations

a. bladder (ICD-10 C67)

Stage Category (Gold Standard)	Stage Category (Rapid)		
	Early	Late	Unknown
Early	83.2%	19.5%	25.0%
Late	9.1%	74.9%	12.0%
Unknown	7.7%	5.5%	63.0%

b. breast (ICD-10 C50)

Stage Category (Gold Standard)	Stage Category (Rapid)		
	Early	Late	Unknown
Early	94.6%	13.8%	55.4%
Late	2.1%	82.0%	11.9%
Unknown	3.3%	4.3%	32.7%

c. colorectum (ICD-10 C18-C20)

Stage Category (Gold Standard)	Stage Category (Rapid)		
	Early	Late	Unknown
Early	88.9%	5.2%	25.3%
Late	9.1%	93.3%	43.0%

Stage Category (Gold Standard)	Stage Category (Rapid)		
	Early	Late	Unknown
Unknown	1.9%	1.5%	31.7%
d. kidney (ICD-10 C64)			

Stage Category (Gold Standard)	Stage Category (Rapid)		
	Early	Late	Unknown
Early	90.7%	3.6%	37.6%
Late	3.4%	93.2%	36.4%
Unknown	5.8%	3.2%	26.0%
e. lung (ICD-10 C33-C34)			

Stage Category (Gold Standard)	Stage Category (Rapid)		
	Early	Late	Unknown
Early	94.9%	1.4%	13.9%
Late	4.3%	98.0%	52.3%
Unknown	0.8%	0.6%	33.9%
f. melanoma (ICD-10 C43)			

Stage Category (Gold Standard)	Stage Category (Rapid)		
	Early	Late	Unknown
Early	92.1%	18.2%	72.4%
Late	5.2%	75.1%	11.8%
Unknown	2.7%	6.7%	15.9%
g. Oesophagus (ICD-10 C15)			

Stage Category (Gold Standard)	Stage Category (Rapid)		
	Early	Late	Unknown
Early	60.2%	2.3%	10.8%
Late	34.3%	90.0%	40.0%
Unknown	5.5%	7.6%	49.2%
h. ovary (ICD-10 C56-C57)			

Stage Category (Gold Standard)	Stage Category (Rapid)		
	Early	Late	Unknown
Early	97.4%	1.0%	21.3%
Late	1.4%	95.9%	47.1%
Unknown	1.2%	3.2%	31.6%
i. prostate (ICD-10 C61)			

Stage Category (Gold Standard)	Stage Category (Rapid)		
	Early	Late	Unknown
Early	92.9%	5.1%	46.1%
Late	5.0%	92.6%	31.0%
Unknown	2.0%	2.4%	22.8%

j. stomach (ICD-10 C16)

Stage Category (Gold Standard)	Stage Category (Rapid)		
	Early	Late	Unknown
Early	78.5%	4.5%	12.4%
Late	16.7%	92.8%	41.2%
Unknown	4.7%	2.7%	46.4%

k. uterus (ICD-10 C54-C55)

Stage Category (Gold Standard)	Stage Category (Rapid)		
	Early	Late	Unknown
Early	97.8%	8.0%	50.8%
Late	1.0%	87.6%	15.5%
Unknown	1.1%	4.4%	33.7%

l. pancreas (ICD-10 C25)

Stage Category (Gold Standard)	Stage Category (Rapid)		
	Early	Late	Unknown
Early	82.7%	1.6%	14.7%
Late	14.3%	97.5%	54.4%
Unknown	3.0%	0.9%	30.9%

m. lymphoma (ICD-10 C81-C86)

Stage Category (Gold Standard)	Stage Category (Rapid)		
	Early	Late	Unknown
Early	93.0%	1.2%	24.9%
Late	5.3%	97.3%	50.2%
Unknown	1.7%	1.4%	24.9%

Stage trends over time

Figure 13 shows the monthly variation of the incidence count by stage at diagnosis for a number of common cancers. Allowing for variation in the number of working days in each month (which affects the overall number of tumours diagnosed per month) and for statistical fluctuation there is little evidence of any stage shift in the period displayed. The feature around May 2018 in the prostate cancer trends can be ascribed to the so called 'Turnbull-Fry effect' (<https://www.ndrs.nhs.uk/examining-the-fry-and-turnbull-effect-on-prostate-cancer-incidence-in-england/>).

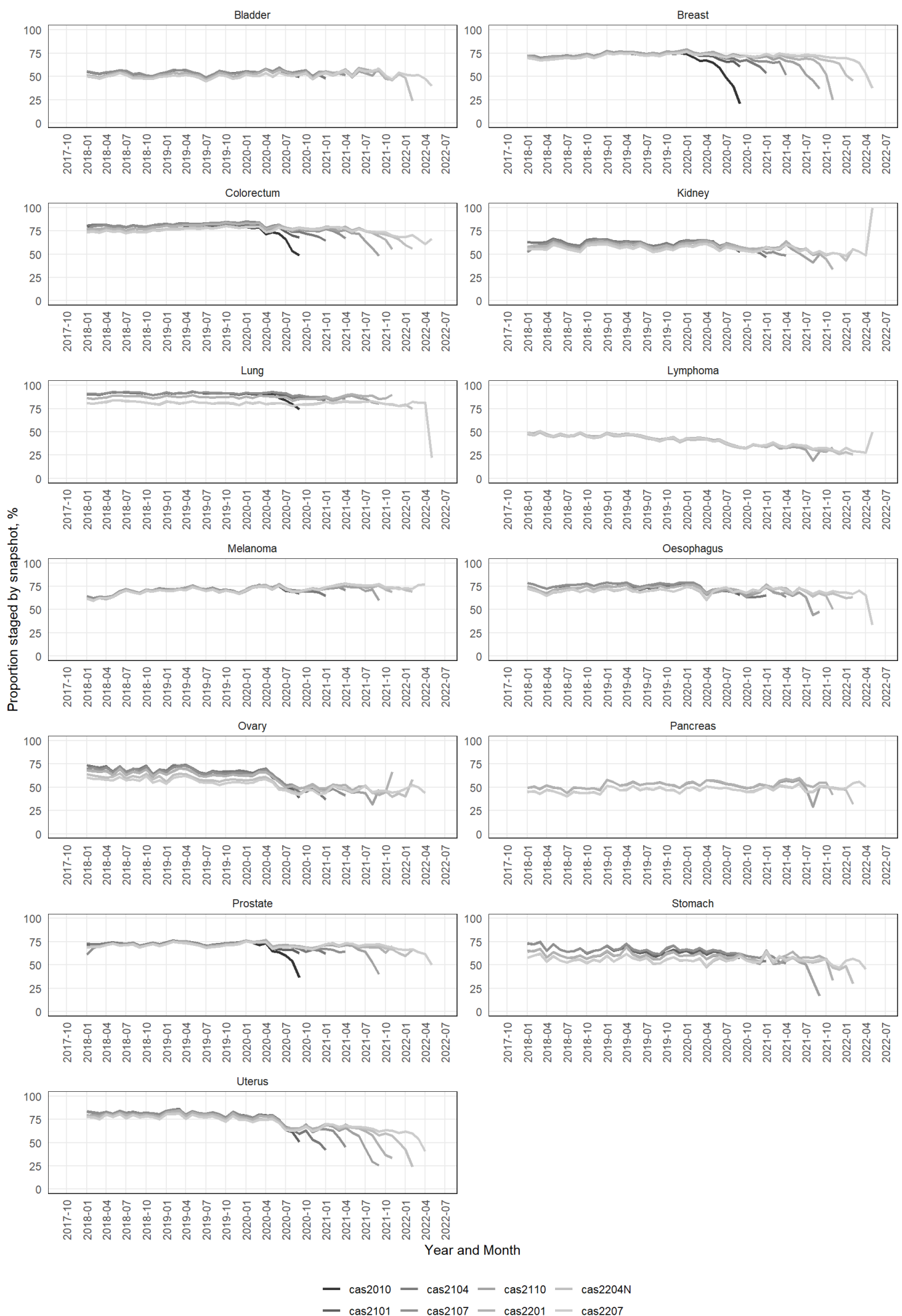
Figure 13: Stage trends over time



Stage completeness by snapshot

Figure 14 shows the completeness of stage by tumour type for one snapshot per quarter. Stage completeness continues to increase and lags behind the incidence completeness due to staging activity happening up to several months after diagnosis.

Figure 14: Stage completeness by snapshot

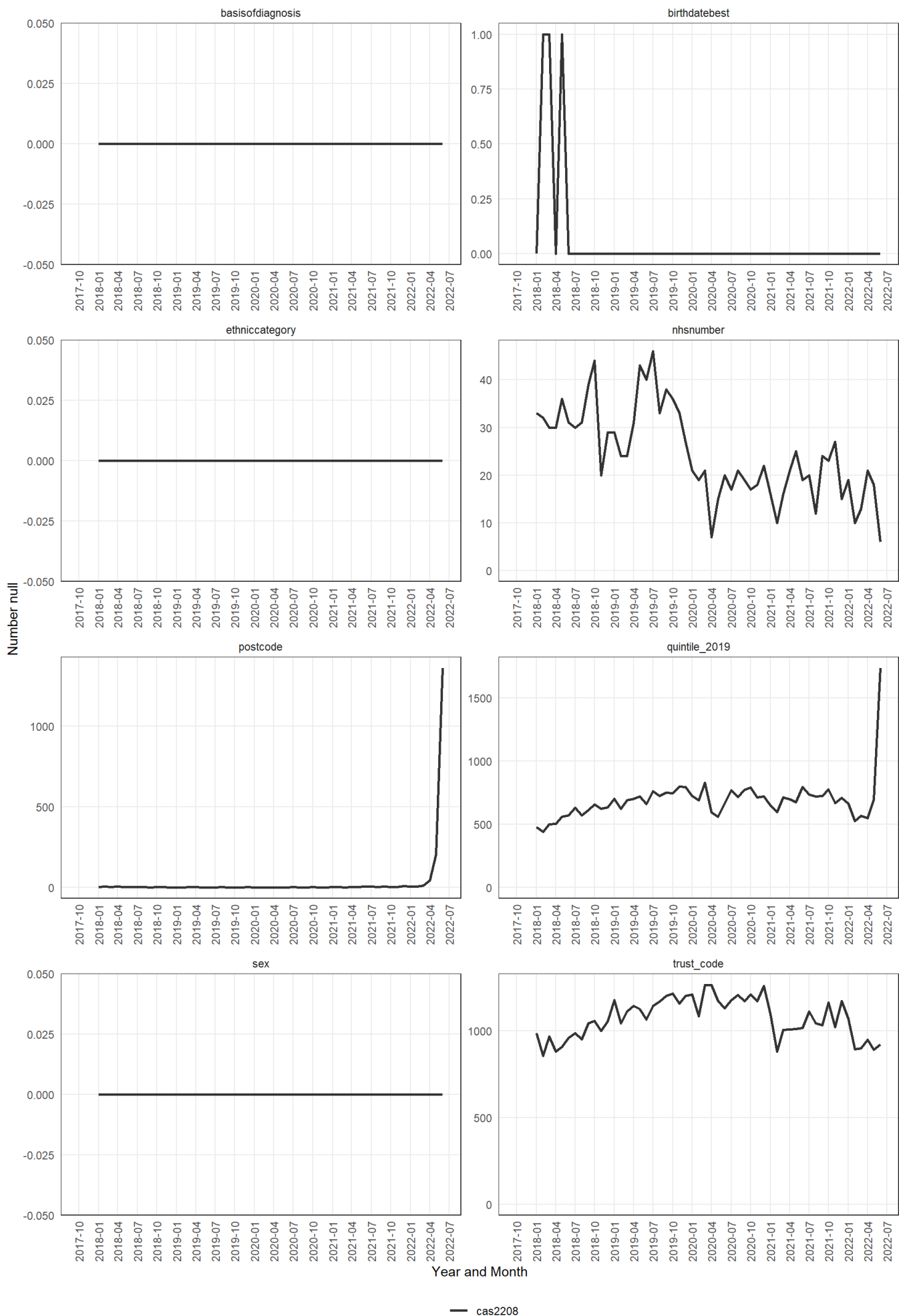


Source: NHS Digital, National Cancer Registration and Analysis Service

Counts of missing data

Figure 15 shows the count of tumours per month where the indicated data item is missing. Larger counts in the most recent months are to be expected.

Figure 15: Counts of missing data

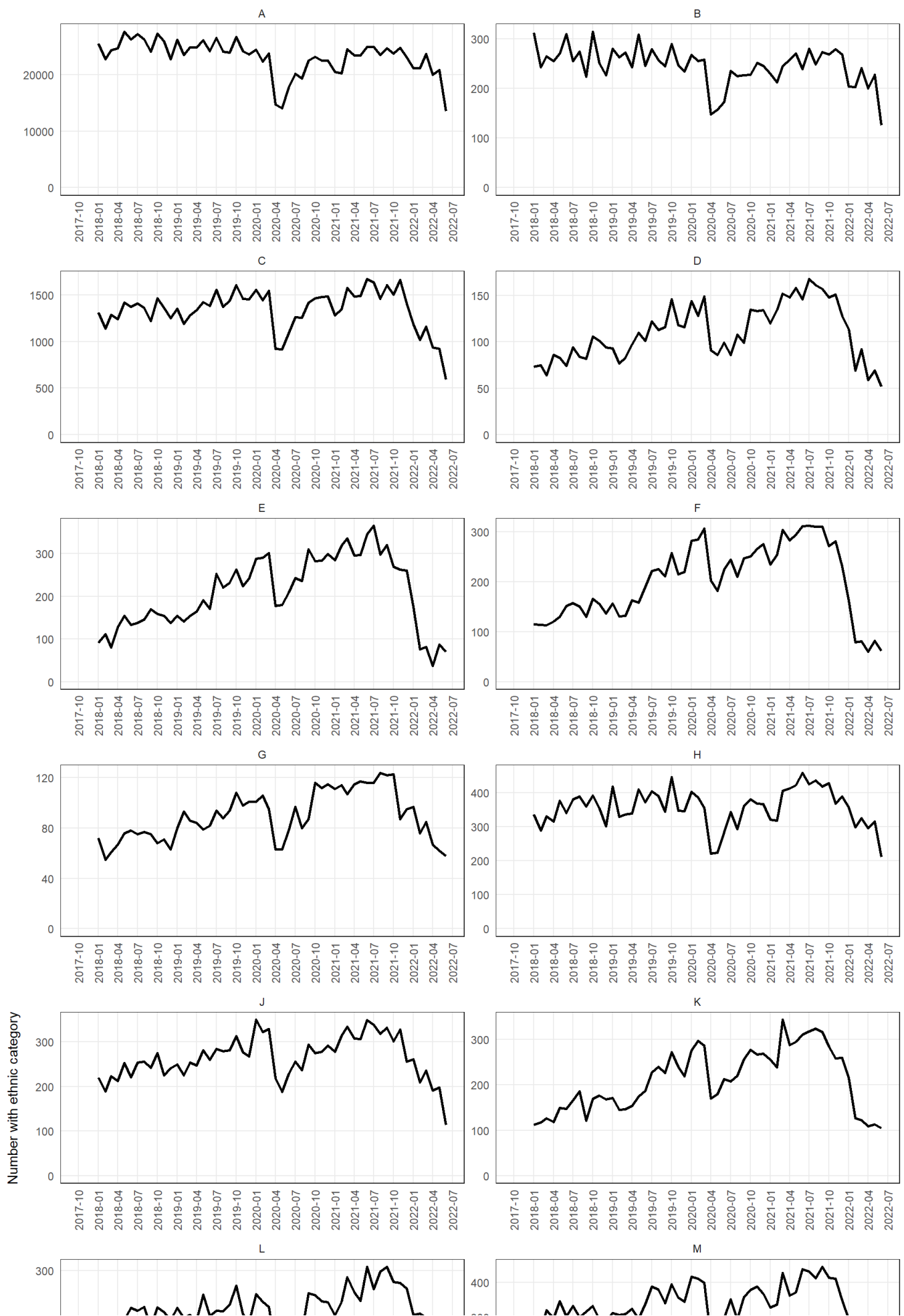


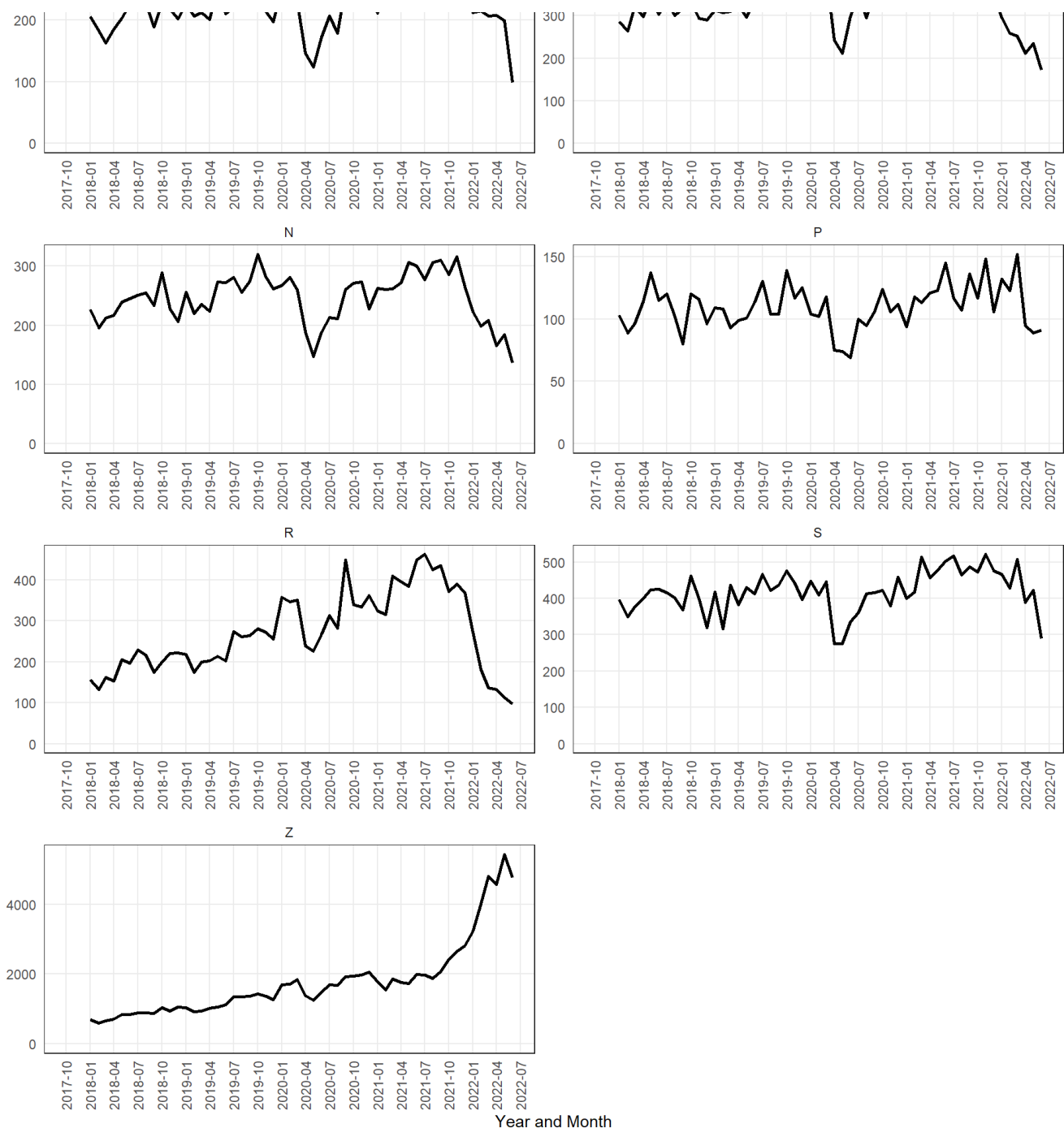
Source: NHS Digital, National Cancer Registration and Analysis Service

Ethnicity completeness

Figure 16 shows the count of tumours per month where the indicated data item is missing. Larger counts in the most recent months are to be expected.

Figure 16: Ethnicity completeness



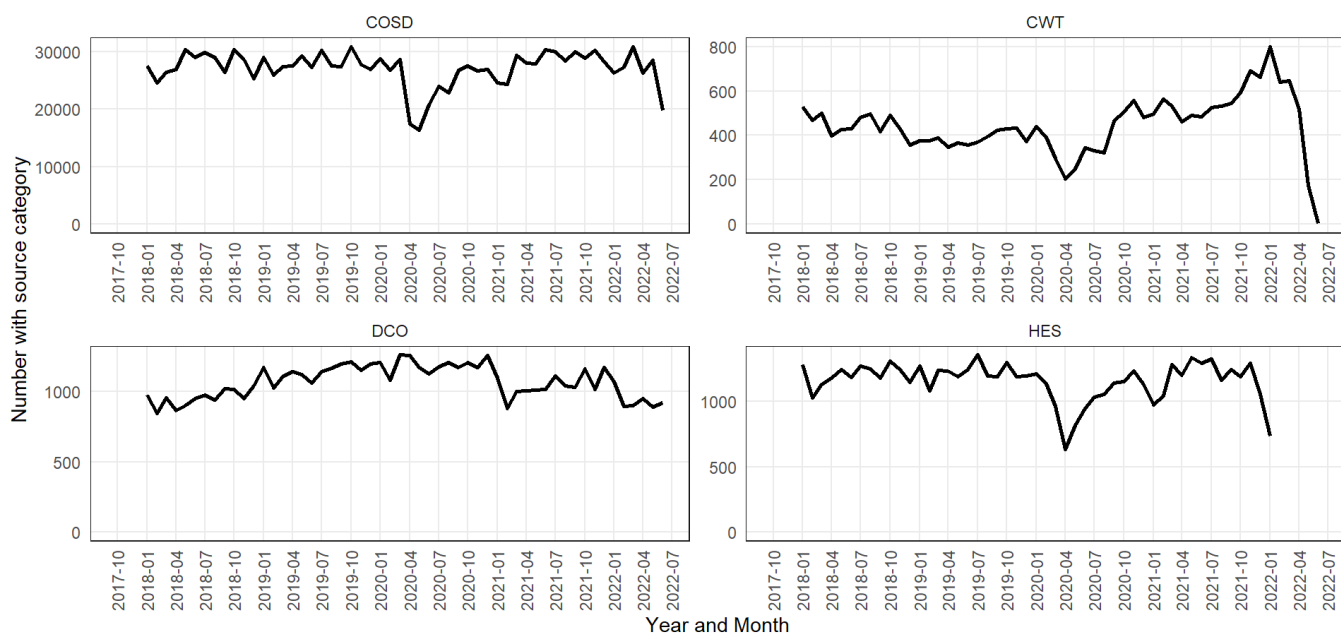


Source: NHS Digital, National Cancer Registration and Analysis Service

Tumour source

Figure 17 shows the proportion of tumours created by the source of the diagnosis - i.e., which dataset was used to create them, by month

Figure 17: Tumour source dataset

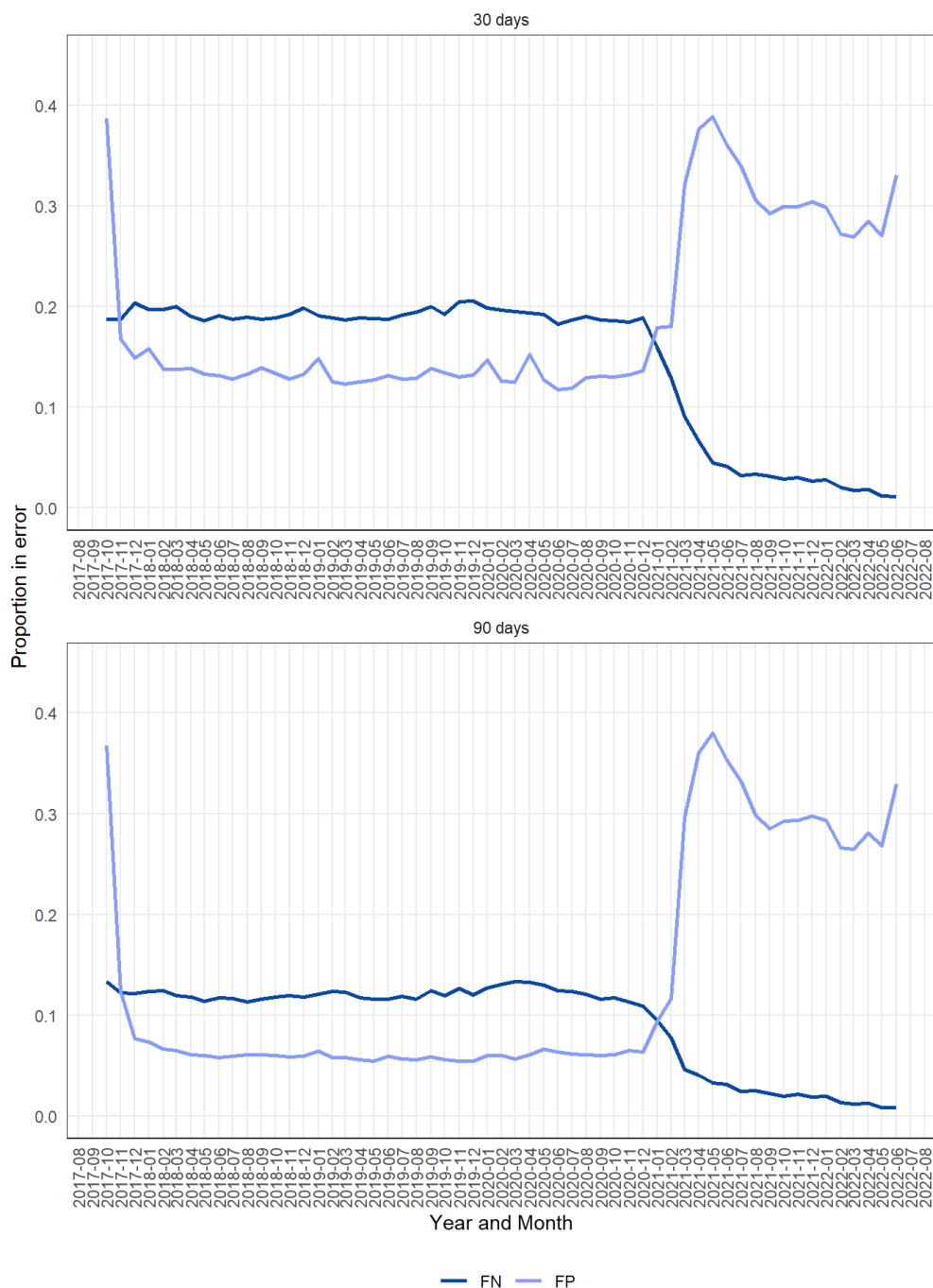


Source: NHS Digital, National Cancer Registration and Analysis Service

False positive and false negative proportion by month

Figure 18 shows the False Negative and False Positive error proportions by month for the broader matching criteria and a matching period of 90 and 30 days.

Figure 18: Monthly False Positive and False Negative proportions

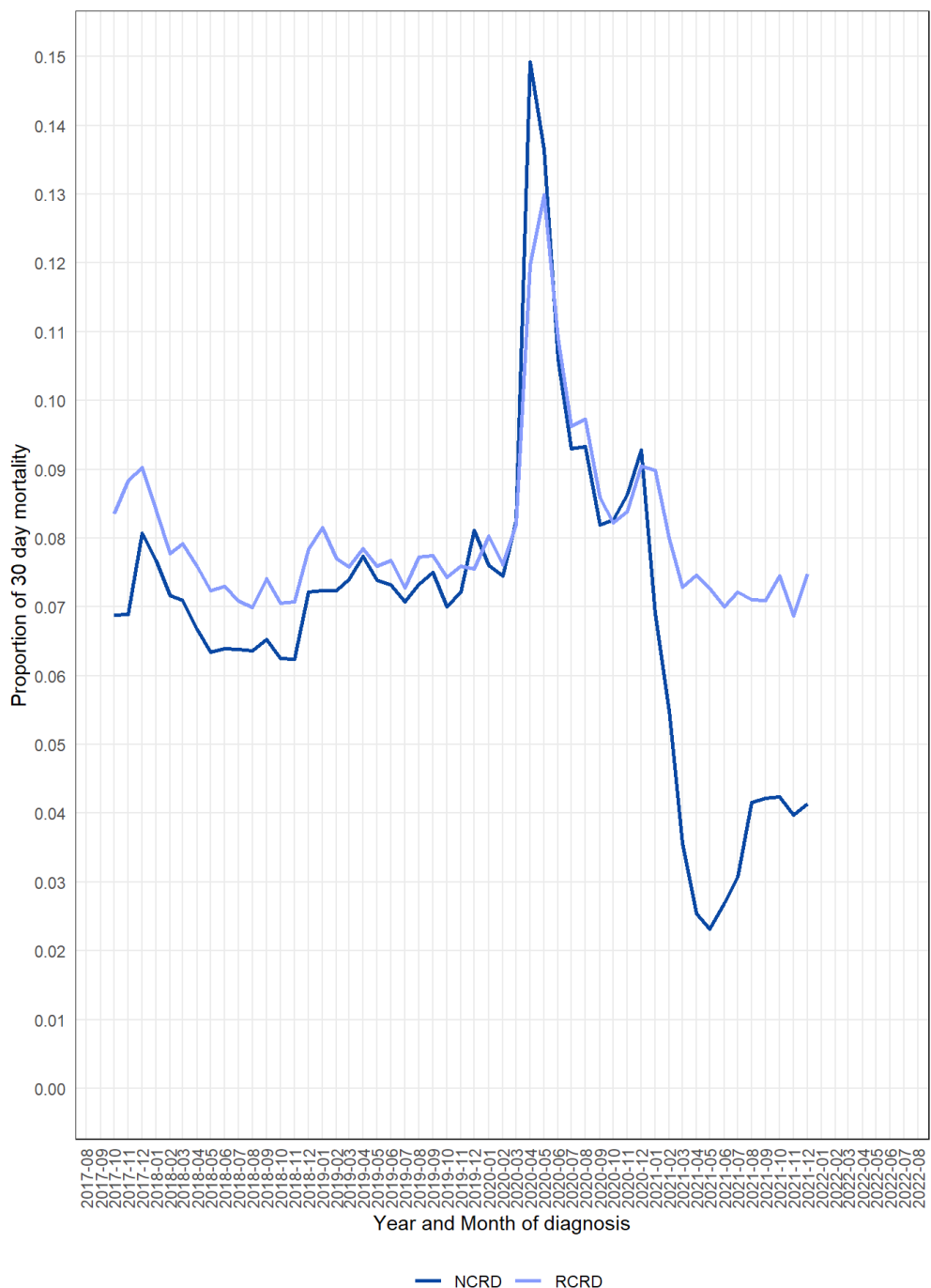


Source: NHS Digital, National Cancer Registration and Analysis Service

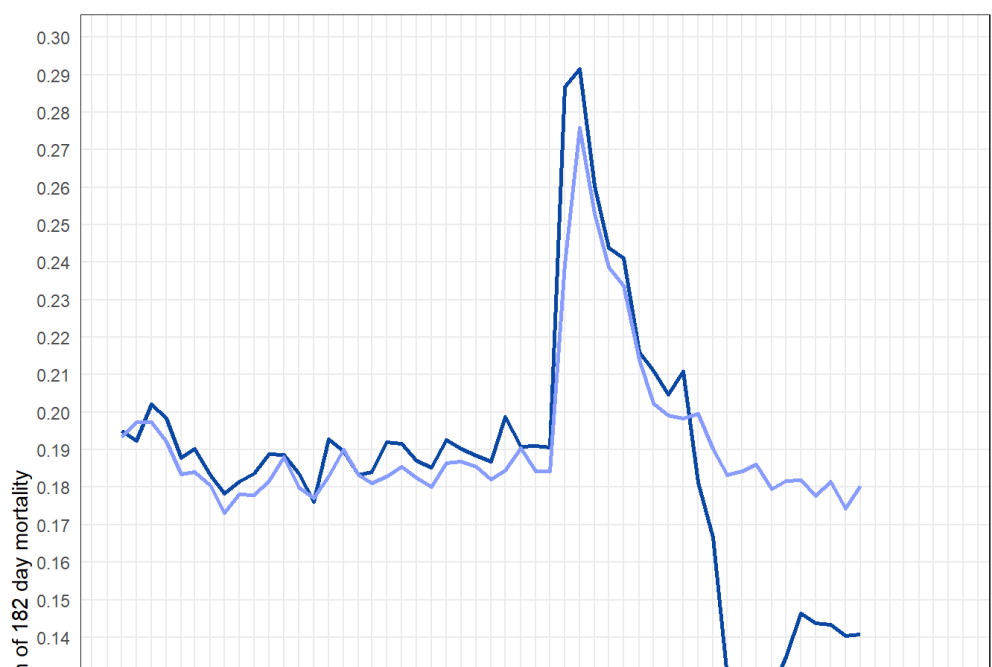
Mortality proportion by month

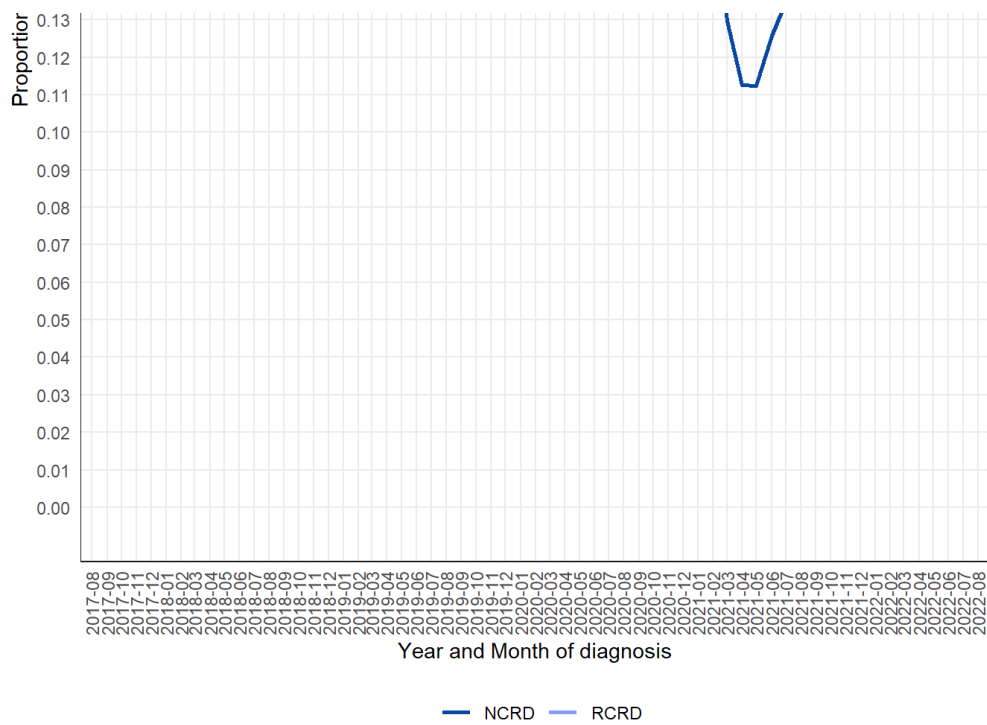
Figure 19 shows the mortality proportions by month mortality within 30 and 182 days in the RCRD compared to the NCRD, for all cancers included in RCRD excl C44 and D06.

Figure 19: Monthly mortality proportions at 30 and 182 days,



Source: NHS Digital, National Cancer Registration and Analysis Service





Appendix 1 - List of pathway events

Table A1: AT_RAPID_PATHWAY: event list

EVENT_TYPE	EVENT_DESC	EVENT_PROPERTY_1	EVENT_PROPERTY_2	EVENT_PROPERTY_3	EVENT_DATE	Linkage
1	CWT Treatment Period Start Date	CWT First Treatment Flag	CWT SITE_ICD10	CWT Cancer Treatment Event Type	Treat period start	NHSNUMBER
2	CWT Treatment Start	CWT Treatment Modality	CWT Cancer Treatment Event type		Treatment start date	NHSNUMBER
3	CWT MDT Begin	CWT MDT Cancer Care Plan discussed indicator			MDT date	NHSNUMBER
4	CWT Faster Diagnosis Period End	(null)	Faster Diagnosis Period site		Faster Diagnosis Period end date	NHSNUMBER
5	HES Admitted Patient Care Episode	Treatment speciality	All ICD-10 codes (for episode)	All OPCS-4 codes (for episode)	Episode Start date - Episode end date	NHSNUMBER
6	HES Admitted Patient Care Operation	OPCS codes (for date) in POS order	ICD-10 codes (for episode)		Operation date	NHSNUMBER
7	SACT Cycle	Benchmark group	Cycle number	Treatment intent	Cycle start date	PATIENTID
8	RTDS Episode	Radiotherapy intent	ICD-10 diagnosis code		Episode treatment start date	PATIENTID
9	Tumour diagnosis (Provisional)	Statusofregistration	ICD-10 diagnosis code	Stage_best	Diagnosisdatebest	PATIENTID
10	Patient last event date	Vitalstatus			Dateofvitalstatus1 (start of range)	PATIENTID

EVENT_TYPE	EVENT_DESC	EVENT_PROPERTY_1	EVENT_PROPERTY_2	EVENT_PROPERTY_3	EVENT_DATE	Linkage
11	HES major surgery (historical)	OPCS-4 code	ICD-10 diagnosis code	Further notes/constraints	Operation date	NHSNUMBER
12	HES major surgery (historical, further constraints)	OPCS-4 code	ICD-10 diagnosis code	Further notes/constraints	Operation date	NHSNUMBER
13	HES major surgery (new)	OPCS-4 code	ICD-10 diagnosis code	Further notes/constraints	Operation date	NHSNUMBER
14	RAWDATA major surgery (historical)	OPCS-4 code	ICD-10 diagnosis code	Further notes/constraints	Operation date	PATIENTID
15	RAWDATA major surgery (historical, further constraints)	OPCS-4 code	ICD-10 diagnosis code	Further notes/constraints	Operation date	PATIENTID
16	RAWDATA major surgery (new)	OPCS-4 code	ICD-10 diagnosis code	Further notes/constraints	Operation date	PATIENTID
17	Prior tumour diagnosis	Statusofregistration	ICD-10 diagnosis code	Stage_best	Diagnosisdatebest	PATIENTID
18	Tumour diagnosis (Final)	Statusofregistration	ICD-10 diagnosis code	Stage_best	Diagnosisdatebest	PATIENTID
19	Patient vital status date	Vitalstatus	ICD-10 underlying cause of death		Vitalstatusdate	PATIENTID
20	RAWDATA holistic needs assessment record	HNA point of pathway **	Primary diagnosis	Laterality	Date of HNA	PATIENTID
21	RAWDATA staging	Inferred best stage	ICD-10 diagnosis code	TNM components	Collected stage date	PATIENTID
22	CWT First Seen	REF_SOURCE	Categorisation of TWW, screening and consultant upgrade cases, where relevant	Suspected cancer referral type	Date first seen	NHSNUMBER
23	HES diagnostic event	OPCS-4 code	Description	BX/LD	Operation date	NHSNUMBER
50	Skeleton Tumour creation	E_base_record type	ICD-10 diagnosis code		Diagnosisdate	PATIENTID
51	Diagnosis reported in COSD	Number of times reported	ICD-10 diagnosis code	E_base_record type	Diagnosisdate	NHSNUMBER
52	CWT estimated diagnosis date	CWT First Treatment Flag	CWT SITE_ICD10	CWT Cancer Treatment Event Type	Adjusted treat period start	NHSNUMBER
53	HES inferred tumour	HES cancer group	ICD-10 diagnosis code		Episode start date	NHSNUMBER

EVENT_TYPE	EVENT_DESC	EVENT_PROPERTY_1	EVENT_PROPERTY_2	EVENT_PROPERTY_3	EVENT_DATE	Linkage
54	COSD diagnosis submission	E_base_record primary diagnoses	ICD-10 diagnosis code (submission)		Diagnosis date (submission)	PATIENTID
55	RAWDATA biopsy record	Laterality	ICD-10 diagnosis code		Collected date/authorised date	PATIENTID
56	RAWDATA imaging record	Laterality	ICD-10 diagnosis code	Procedure_date - diagdate	Diagdate	PATIENTID
57	RAWDATA HNA diagnosis	Laterality	Primary diagnosis (ICD-10)		Diagdate	PATIENTID
101	Inferred diagnosis (54 only)	Event_property_1	ICD-10 diagnosis code	Cancer group	First recorded date	PATIENTID

*: https://www.datadictionary.nhs.uk/data_dictionary/attributes/p/prev/primary_cancer_site_for_cancer_faster_diagnosis_pathway_de.asp?shownav=0
 (https://www.datadictionary.nhs.uk/data_dictionary/attributes/p/prev/primary_cancer_site_for_cancer_faster_diagnosis_pathway_de.asp?shownav=0)

** : https://www.datadictionary.nhs.uk/data_dictionary/attributes/h/ho/holistic_needs_assessment_point_of_pathway_for_cancer_de.asp?shownav=0
 (https://www.datadictionary.nhs.uk/data_dictionary/attributes/h/ho/holistic_needs_assessment_point_of_pathway_for_cancer_de.asp?shownav=0)

Appendix 2 - List of Rapid Registration fields available

Table A2: AT_RAPID_TUMOUR: field list

COLUMN_NAME	DATA_TYPE	Notes
INDIVIDUALID	NUMBER(11,0)	Matches AT_RAPID_PATHWAY for each event with event_type=101
PATIENTID	NUMBER(19,0)	Matches AT_RAPID_PATHWAY for each event with event_type=101
NHSNUMBER	VARCHAR2(12 BYTE)	Matches AT_RAPID_PATHWAY for each event with event_type=101
TUMOUR_AVPID	NUMBER	Matches AT_RAPID_PATHWAY for each event with event_type=101
DIAGNOSISDATE	DATE	Matches AT_RAPID_PATHWAY for each event with event_type=101
TUMOUR_SITE	VARCHAR2(255 BYTE)	Matches AT_RAPID_PATHWAY for each event with event_type=101 (event_property_2)
BIRTHDATEBEST	DATE	Taken from Encore
SEX	VARCHAR2(255 BYTE)	Taken from Encore
POSTCODE	VARCHAR2(255 BYTE)	Taken from Encore
SURNAME	VARCHAR2(64 BYTE)	Taken from Encore
FORENAME	VARCHAR2(64 BYTE)	Taken from Encore
STAGE	VARCHAR2(255 BYTE)	Defined for selected cancer sites
ETHNICITY	VARCHAR2(255 BYTE)	Taken from Encore

COLUMN_NAME	DATA_TYPE	Notes
FINAL_ROUTE	VARCHAR2(22 BYTE)	Final Route to Diagosis using an adapted version of the standard NCRAS methodology
QUINTILE_2019	VARCHAR2(26 BYTE)	Index of Multiple Deprivation quintile defined using the standard NCRAS methodology
CHRL_TOT_27_03	NUMBER	Charlson score defined using the standard NCRAS methodology
TUMOUR_MORPHOLOGY	VARCHAR2(255 BYTE)	Tumour morphology as recorded in the COSD system
TUMOUR_PERFORMANCESTATUS	VARCHAR2(4 BYTE)	Patient performance status at time of diagnosis
BASISOFDIAGNOSIS	VARCHAR2(260 CHAR)	The basis of diagnosis (e.g. clinical; pathological; etc.)
LSOA11	VARCHAR2(27 BYTE)	LSOA of residence at time of diagnosis
SOURCE	VARCHAR2(7 BYTE)	The dataset used as the primary source for the RCRD registration
SOURCE_ID	VARCHAR2(64 BYTE)	The unique ID of the record used as the primary source for the RCRD registration

Appendix 3 - Cancer groups used for matching

Table A3: Rapid Registration ICD-10 tumour inclusion list

ICD	CANCER_GROUP	ICD	CANCER_GROUP
C00	Head & Neck	C54	Gynae
C01	Head & Neck	C55	Gynae
C02	Head & Neck	C56	Gynae
C03	Head & Neck	C57	Gynae
C04	Head & Neck	C58	Gynae
C05	Head & Neck	C59	Other
C06	Head & Neck	C60	Urology
C07	Head & Neck	C61	Prostate
C08	Head & Neck	C62	Urology
C09	Head & Neck	C63	Urology
C10	Head & Neck	C64	Urology
C11	Head & Neck	C65	Urology
C12	Head & Neck	C66	Urology
C13	Head & Neck	C67	Urology
C14	Head & Neck	C68	Urology
C15	O-G	C69	Brain & CNS
C16	O-G	C70	Brain & CNS
C17	Upper GI	C71	Brain & CNS
C18	Colorectal	C72	Brain & CNS
C19	Colorectal	C73	Endocrine

ICD	CANCER_GROUP	ICD	CANCER_GROUP
C20	Colorectal	C74	Endocrine
C21	Colorectal	C75	Endocrine
C22	Upper GI	C76	Unknown Primary
C23	Upper GI	C77	Unknown Primary
C24	Upper GI	C78	Unknown Primary
C25	Upper GI	C79	Unknown Primary
C26	Upper GI	C80	Unknown Primary
C27	Other	C81	Haematological
C28	Other	C82	Haematological
C29	Other	C83	Haematological
C30	Head & Neck	C84	Haematological
C31	Head & Neck	C85	Haematological
C32	Head & Neck	C86	Haematological
C33	Lung	C87	Haematological
C34	Lung	C88	Haematological
C35	Other	C89	Haematological
C36	Other	C90	Haematological
C37	Other	C91	Haematological
C38	Lung	C92	Haematological
C39	Lung	C93	Haematological
C40	Bone & ST	C94	Haematological
C41	Bone & ST	C95	Haematological
C42	Other	C96	Haematological
C43	Melanoma	C97	Unknown Primary
C44	NMSC	D05	Breast
C45	Lung	D06	Gynae
C46	Bone & ST	D09	Urology
C47	Brain & CNS	D32	Brain & CNS
C48	Gynae	D33	Brain & CNS
C49	Bone & ST	D35	Brain & CNS
C50	Breast	D41	Urology
C51	Gynae	D42	Brain & CNS
C52	Gynae	D43	Brain & CNS
C53	Gynae	D44	Brain & CNS

Appendix 4 - Alternative defining events

Several options were considered as to the defining events for the Rapid Registrations. Both standalone datasets, subsets of standalone datasets, and combined datasets were explored and their FNE and FPE figures quantified. A subset of these alternatives are presented below as a demonstration of the process but the majority of this exploratory work is out of scope for this document.

Candidates for diagnosis events from the three main datasets that are rapidly available and have nominally full coverage of cancer patients are shown below (SACT and RTDS were also examined but data is not presented). Of the three, the CWT data has the best FPE but the FNE is substantially higher than the COSD dataset. HES produced the worst results in both measures. A filtering process was applied to the standalone COSD data to remove apparently new diagnoses that were actually recurrences of prior tumours. This improved the FPE at a cost of increasing the FNE. We continue to test whether this process can be further refined to improve the combined FPE and FNE figures, and monitor changes in the underlying datasets that might also give new opportunities to do so.

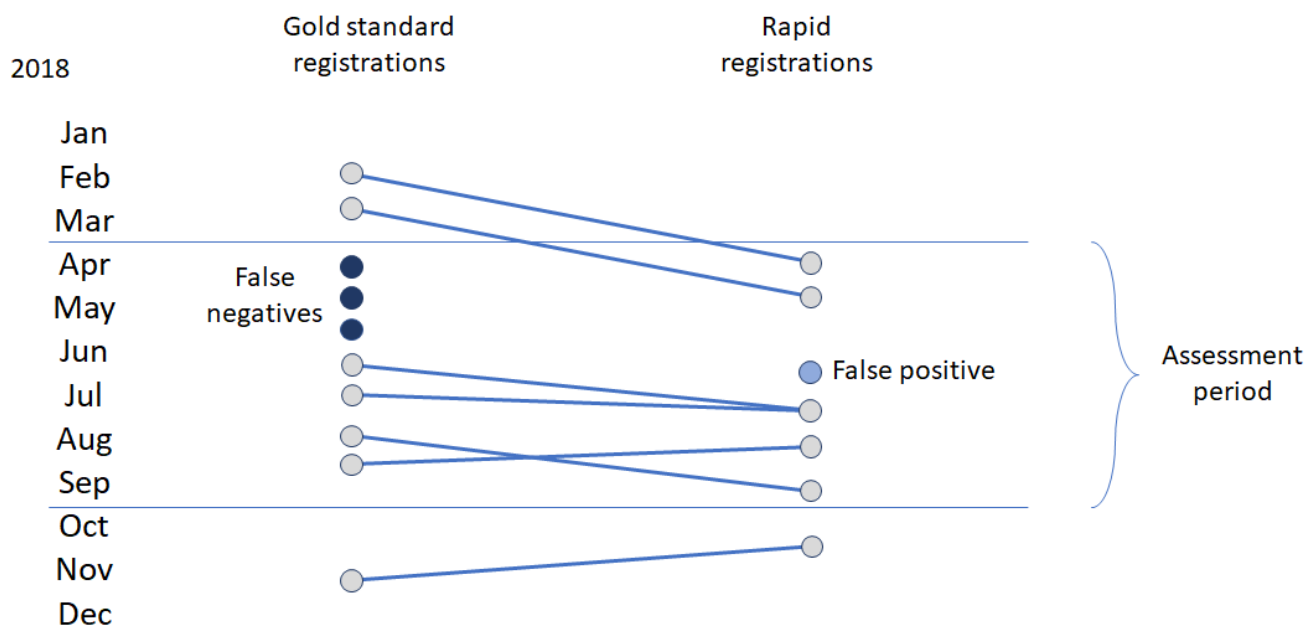
Table A4: Rapid Cancer Registrations: alternative defining events

Event	FPE	FNE
Event 52 - standalone CWT	7.6%	28.3%
Event 53 - standalone HES	13.2%	38.9%
Event 54 - standalone COSD	8.1%	15.8%
Event 101 (up to cas2106) - filtered COSD	5.2%	17.7%
Event 101 (cas2107) - filtered combined COSD/CWT	5.6%	16.4%
Event 101 (cas2108) - filtered combined COSD/CWT	5.1%	16.5%
Event 101 (cas2109) - filtered combined COSD/CWT	5.1%	16.6%
Event 101 (cas2110) - filtered combined COSD/CWT/HES	5.1%	14.7%
Event 101 (cas2111) - filtered combined COSD/CWT/HES	6.2%	13.4%
Event 101 (cas2112 to cas2202) - filtered combined COSD/CWT/HES and Death Certificates Only	5.3%	13.4%
Event 101 (cas2203 to cas2204) - filtered combined COSD/CWT/HES and Death Certificates Only	6.3%	12.2%
Event 101 (cas2205) - filtered combined COSD/CWT/HES and Death Certificates Only	6.1%	12.3%
Event 101 (cas2206) - filtered combined COSD/CWT/HES and Death Certificates Only	5.6%	12.5%
Event 101 (cas2207) - filtered combined COSD/CWT/HES and Death Certificates Only	6.0%	11.8%
Event 101 (cas2208) - filtered combined COSD/CWT/HES and Death Certificates Only	6.0%	11.6%

Appendix 5 - Counts and error tabulations

Figure A1 shows an example for a very small dataset of how counts and error proportions are derived. This dataset has 10 Gold Standard Registrations and 7 Rapid Registrations overall (both indicated by the dots in the figure, with time running vertically over the course of 2018 and Gold Standard vs Rapid Registrations divided horizontally). Successful linkages between Gold Standard and Rapid Registrations are indicated by blue lines. False negatives and false positives are indicated. Only tumours in the 6-month assessment period are included in the tabulations below, although these can link to tumours outside the period as shown, and many-to-one linkages are also allowed. The false negative rate is therefore 3 in 7 and the false positive rate 1 in 6 below.

Figure A1: Illustration of counts and errors tabulation



Tables A5 and A6 below tabulate counts of Gold Standard and Rapid Registrations together with the numbers of false positive and false negative errors. When considering comparisons between figures the nature of the linkage and relationships displayed in the diagram above should be kept in mind.

Table A5: Counts and errors tabulation by cancer group

Cancer group	Gold Standard (GS) Registrations	Rapid Registrations	Difference	Percentage Rapid/GS	FPE	FNE
Brain & CNS	5534	5119	415	92.5%	699	1112
Breast	28909	26878	2031	93.0%	1412	1970
Colorectal	18946	17850	1096	94.2%	916	1667
Endocrine	1898	1680	218	88.5%	196	351
Gynae	9762	9380	382	96.1%	697	963
Haematological	13873	12516	1357	90.2%	813	2192
Head & Neck	5275	4935	340	93.6%	391	663
Lung	21628	20132	1496	93.1%	623	2007
Melanoma	8240	7687	553	93.3%	685	1040
O-G	6617	6480	137	97.9%	372	466
Prostate	27012	25242	1770	93.4%	317	2193
Bone & Soft Tissue	1136	1087	49	95.7%	366	406
Unknown Primary	3419	2631	788	77.0%	710	1499
Upper GI	9220	8761	459	95.0%	829	1343
Urology	16952	14755	2197	87.0%	919	2818

Table A6: Counts and errors tabulation by cancer site

Cancer site	Gold Standard (GS) Registrations	Rapid Registrations	Difference	Percentage Rapid/GS	FPE	FNE
C00	109	150	-41	137.6%	65	23
C01	645	470	175	72.9%	13	59
C02	604	618	-14	102.3%	17	85
C03	233	108	125	46.4%	4	64

Cancer site	Gold Standard (GS) Registrations	Rapid Registrations	Difference	Percentage Rapid/GS	FPE	FNE
C04	253	240	13	94.9%	10	30
C05	214	188	26	87.9%	8	31
C06	270	287	-17	106.3%	20	48
C07	236	285	-49	120.8%	100	50
C08	82	91	-9	111.0%	15	12
C09	912	775	137	85.0%	14	59
C10	150	233	-83	155.3%	11	28
C11	110	109	1	99.1%	6	11
C12	155	99	56	63.9%	1	10
C13	142	129	13	90.8%	11	21
C14	25	64	-39	256.0%	15	13
C15	3997	4321	-324	108.1%	125	218
C16	2620	2159	461	82.4%	247	248
C17	808	716	92	88.6%	152	231
C18	12421	11762	659	94.7%	668	1220
C19	997	953	44	95.6%	45	90
C20	4884	4492	392	92.0%	114	318
C21	644	643	1	99.8%	89	39
C22	2631	2540	91	96.5%	265	423
C23	472	476	-4	100.8%	30	55
C24	642	524	118	81.6%	28	83
C25	4517	4196	321	92.9%	136	479
C26	150	309	-159	206.0%	218	72
C30	162	155	7	95.7%	25	26
C31	92	64	28	69.6%	5	25
C32	881	870	11	98.8%	51	68
C33	13	12	1	92.3%	1	3
C34	20173	18762	1411	93.0%	549	1827
C37	167	86	81	51.5%	11	56
C38	71	355	-284	500.0%	47	21
C39	NA	13	NA	NA%	4	NA
C40	118	106	12	89.8%	11	24
C41	116	144	-28	124.1%	78	45
C43	8240	7687	553	93.3%	685	1040
C45	1204	904	300	75.1%	11	100
C46	68	40	28	58.8%	3	28

Cancer site	Gold Standard (GS) Registrations	Rapid Registrations	Difference	Percentage Rapid/GS	FPE	FNE
C47	26	14	12	53.8%	6	20
C48	284	453	-169	159.5%	141	71
C49	834	797	37	95.6%	274	309
C50	25087	24028	1059	95.8%	1301	1620
C51	640	591	49	92.3%	55	81
C52	94	106	-12	112.8%	16	11
C53	1317	1276	41	96.9%	51	125
C54	4094	3725	369	91.0%	111	177
C55	72	324	-252	450.0%	22	16
C56	2983	2566	417	86.0%	245	444
C57	268	313	-45	116.8%	37	37
C58	10	26	-16	260.0%	19	1
C60	303	292	11	96.4%	41	50
C61	27012	25242	1770	93.4%	317	2193
C62	1052	1073	-21	102.0%	87	70
C63	31	18	13	58.1%	7	24
C64	4828	4388	440	90.9%	279	720
C65	411	323	88	78.6%	23	81
C66	357	259	98	72.5%	13	116
C67	4465	5042	-577	112.9%	138	664
C68	95	57	38	60.0%	6	39
C69	368	328	40	89.1%	35	61
C70	22	45	-23	204.5%	4	3
C71	2258	2112	146	93.5%	134	189
C72	78	89	-11	114.1%	35	16
C73	1725	1514	211	87.8%	109	269
C74	116	116	0	100.0%	50	47
C75	57	50	7	87.7%	37	35
C76	94	224	-130	238.3%	123	54
C77	273	124	149	45.4%	60	131
C78	598	56	542	9.4%	24	325
C79	229	128	101	55.9%	53	123
C80	2225	2099	126	94.3%	450	866
C81	893	880	13	98.5%	17	59
C82	1205	1048	157	87.0%	15	139
C83	3145	2709	436	86.1%	37	327

Cancer site	Gold Standard (GS) Registrations	Rapid Registrations	Difference	Percentage Rapid/GS	FPE	FNE
C84	390	232	158	59.5%	13	121
C85	1366	1006	360	73.6%	65	306
C86	NA	101	NA	NA%	3	NA
C88	207	357	-150	172.5%	14	51
C90	2530	2199	331	86.9%	71	419
C91	2242	1900	342	84.7%	89	455
C92	1756	1646	110	93.7%	306	264
C93	23	190	-167	826.1%	27	1
C94	27	80	-53	296.3%	65	12
C95	50	69	-19	138.0%	12	13
C96	39	99	-60	253.8%	79	25
D05	3822	2850	972	74.6%	111	350
D09	4902	1283	3619	26.2%	265	908
D32	1371	1041	330	75.9%	94	404
D33	434	604	-170	139.2%	121	156
D35	457	547	-90	119.7%	190	107
D41	508	2020	-1512	397.6%	60	146
D42	140	16	124	11.4%	4	25
D43	264	266	-2	100.8%	54	66
D44	116	57	59	49.1%	22	65

Appendix 6 - False negative errors and basis of diagnosis

This appendix explores the reason for the overall age-dependence of the false negative error rate.

The most common methods of confirming a diagnosis (histology and cytology) account for the lowest proportion of false negatives (Figure A2). Where diagnosis comes from specific tumour markers, the Rapid Registrations are much more likely to "miss" the significant event or events. Patients diagnosed clinically (from imaging, consultation by a doctor but without a pathological sample being taken) are also more likely to be "missed" in the Rapid Registrations dataset.

Those patients for whom a diagnosis method cannot be determined (unknown) or died before they could be offered cancer treatment (death certificate), are most likely to be "missed" in the Rapid Registrations dataset. As Figure A3 indicates though, these account for a small proportion of those falsely omitted from the Rapid Registrations.

The marked reduction in the proportion of patients having their diagnosis confirmed from a pathological specimen (histology or cytology) explains the increase often observed at older ages in Figure A3, from the age of around 70, reflecting fewer patients having an invasive procedure performed on them as age increases. This is likely to be the reason behind the increasing false negative proportions by age observed overall and in most tumour groups (Figures 5 and 6).

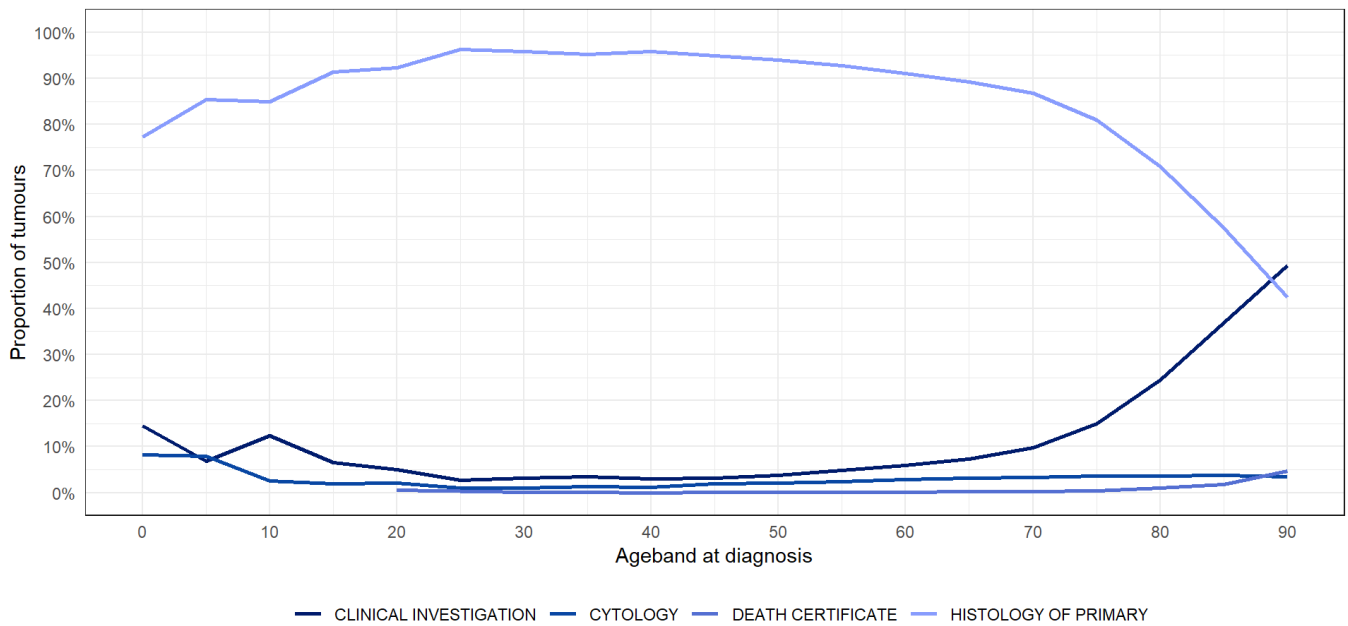
Figure A2: The proportion of false negative Rapid Registrations by tumour group and basis of diagnosis, England, 2018

Proportion of FNE, by Basis of Diagnosis



Source: NHS Digital, National Cancer Registration and Analysis Service

Figure A3: The proportion of false negative Rapid Registrations by method of diagnosis, England, 2018 (all tumour types combined)



Source: NHS Digital, National Cancer Registration and Analysis Service